

Aderans

# SENTOO

COLLECTION

PREMIUM

BY SENTOO

LOTUS

BY SENTOO

CREATIVE

BY SENTOO

ESSENTIAL

BY SENTOO



**HAIR STYLES** 4  
FROM SHORT TO LONG

**PREMIUM** 6

**LOTUS** 18

**ESSENTIAL** 34

**CREATIVE** 36

HIGH HEAT FIBRE 38

HUMAN HAIR 44

TOP PIECES (HIGH HEAT FIBRE) 50

**HAIR CARE** 54

**ACCESSORIES** 56

**HAIR & SCALP** 60

**STYLE OVERVIEW**  
SIZE & CAP CONSTRUCTION  
HAIR LENGTH, COLOUR OVERVIEW

**PREMIUM** 62

**LOTUS** 66

**CREATIVE** 70

**COLOURS** 74



**Enjoy Sentoo Collection: an exclusive selection of wig ranges. Crafted for today's client by top designers – Sentoo wigs are unique in their superior finish and design. The Sentoo Collection is unlike any other, encompassing different ranges to ensure the needs of every customer is met.**

Oppdag/Oplev Sentoo Collection, et eksklusivt utvalg/udvalg av peruker/parykker. Sentoo parykker er laget/fremstillet av/af topdesigners – for dagens kunder, og har en unik finish og design. Sentoo Collection er i en klasse for seg/sig, og består av ulike/forskellige kolleksjoner som oppfyller/dækker behovet til/hos alle kunder.

THE ADERANS TEAM

# SENTOO COLLECTION

PREMIUM
  LOTUS
  CREATIVE
  ESSENTIAL





Hand-tied  
 Monofilament  
 Soft Lace Front  
 Håndknyttet/Handknetet  
 Monofilament  
 Soft Lace Front

PREMIUM | SANGO & AYA

# PREMIUM

BY SENTOO

STYLE OVERVIEW | STIL/MODELLOVERSIKT PAGE 62

Premium – a range of beautifully crafted synthetic fibre wigs. Our designers created the Sentoo Premium Collection with one aim in mind: producing a product that enables wearers of any age to feel comfortable all day long. The Premium range is perfect for those wishing for a natural look with easy to wear comfort and a base suited to those with a sensitive scalp.

Premium – en kolleksjon av vakre/smukke parykker i syntetfiber. Våre/Vores designere har utviklet/udviklet Sentoo Premium Collection med ett mål – å/at skape et produkt som ger/gir/giver bärare/brukere/brugere i alle åldrar/aldrer hög/høy/høj komfort hele dagen. Premium-kolleksjonen er perfekt for den som ønsker et naturlig utseende/look med hög/høy/høj komfort og stomme/base för/tilpasset sensitiv hjässa/hodebunn/hoovedbund.



**AYA** 27125



SIZE/STORLEK/STØRRELSE: 53-54 cm

HAIR LENGTH/HÅRLÄNGD/LÆNGDE

FRONT: 6.5 cm

CROWN/TOP: 5 cm

NAPE/NACKE/NAKKE: 5 cm

COLOURS/FÄRGER/FARVER

BLONDES: 134, 18/22, 20/22, 769, A791G. BROWNS: 2/4, 4/6, 8-10/20G, S12/10, 768. REDS: S637. GREYS: 135, 38, S456, 56, 56/60, 60, 600.

COLOUR: 769



**MAIKO** 27115



SIZE/STORLEK/STØRRELSE: 53-54 cm

HAIR LENGTH/HÅRLÄNGD/LÆNGDE

FRONT: 6 cm

CROWN/TOP: 6 cm

NAPE/NACKE/NAKKE: 6 cm

COLOURS/FÄRGER/FARVER

BLONDES: 134, 18/22, 20/22, 769.

BROWNS: A8. GREYS: 135, 38, S456, 56, 56/60, 60, 600.



COLOUR: 56/60



## 27111 KYU

S M L



SIZE/**STORLEK**/**STØRRELSE**: 53-54 cm

HAIR LENGTH/**HÅRLÄNGD**/**LÆNGDE**

FRONT: 10 cm

CROWN/TOP: 10 cm

NAPE/**NACKE**/**NAKKE**: 5 cm

COLOURS/**FÄRGER**/**FARVER**

BLONDES: 134, 18/22, 20/22, 769, A791G.

BROWNS: 1B, 2/4, 4/6, 8-10/20G, S12/10,

768. REDS: S637. GREYS: 135, 38, S456, 56,

56/60, 60, 600.



## 27137 KYU PETITE

SIZE/**STORLEK**/**STØRRELSE**:

51 cm

COLOURS/**FÄRGER**/**FARVER**

BLONDES: 134, 18/22, 20/22, 769

BROWNS: 2/4, 4/6, S12/10. REDS:

S637. GREYS: 38, 56/60, 60, 600.

COLOUR: S12/10

## TANI 27124



S M L

SIZE/**STORLEK**/**STØRRELSE**: 53-54 cm

HAIR LENGTH/**HÅRLÄNGD**/**LÆNGDE**

FRONT: 9.5 cm | CROWN/TOP: 9.5 cm | NAPE/**NACKE**/**NAKKE**: 6 cm

COLOURS/**FÄRGER**/**FARVER** BLONDES: 134, 18/22, 769. GREYS:

135, 38, S456, 56, 60, 600.



COLOUR: 600



## KASUMI 27122



S M L

SIZE/**STORLEK**/**STØRRELSE**: 53-54 cm

HAIR LENGTH/**HÅRLÄNGD**/**LÆNGDE**

FRONT: 11.5 cm | CROWN/TOP: 9.5 cm | NAPE/**NACKE**/**NAKKE**: 6.5 cm

COLOURS/**FÄRGER**/**FARVER** BLONDES: 134, 18/22, 20/22, 769.

BROWNS: 4/6, 8-10/20G. GREYS: 135, 38, S456, 56, 56/60, 60, 600.

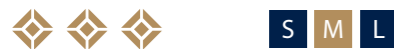


COLOUR: 60



COLOUR: S637

## KINU 27133



SIZE/STORLEK/STØRRELSE: 53-54 cm

HAIR LENGTH/HÅRLÆNGD/LÆNGDE

FRONT: 14 cm

CROWN/TOP: 15 cm

NAPE/NACKE/NAKKE: 4 cm

COLOURS/FÄRGER/FARVER

BLONDES: 134, 18/22, 20/22, 769, S770, A791G, A812G. BROWNS: 2/4, 4/6, 8-10/20G, S12/10, 768. REDS: S637, SA811G. GREYS: 132, 38, S456, 56, 56/60, 60, 600.



## YAMA 27117



SIZE/STORLEK/STØRRELSE: 53-54 cm

HAIR LENGTH/HÅRLÆNGD/LÆNGDE

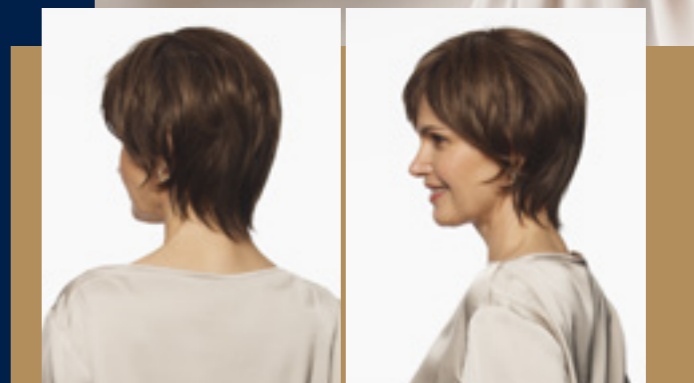
FRONT: 10 cm

CROWN/TOP: 13 cm

NAPE/NACKE/NAKKE: 10 cm

COLOURS/FÄRGER/FARVER

BLONDES: 18/22, 20/22, 769, S770.  
BROWNS: 2/4, 4/6, 8-10/20G, S12/10,  
768. REDS: S637. GREYS: 38, 56,  
56/60, 60, 600.



COLOUR: S12/10



## 27120 SORA

S M L



SIZE/STORLEK/STØRRELSE: 53-54 cm

HAIR LENGTH/HÅRLÄNGD/LÆNGDE

FRONT: 7.5 cm

CROWN/TOP: 19 cm

NAPE/NACKE/NAKKE: 7 cm

COLOURS/FÄRGER/FARVER

BLONDES: 134, 20/22, 713, 769, S770, A791G, A812G. BROWNS: 1B, 2/4, 4/6, 8-10/20G, S12/10, A761G. REDS: S637, SA811G. GREYS: 38, 56, 56/60.



## 27138 SORA PETITE

SIZE/STORLEK/STØRRELSE: 51 cm

COLOURS/FÄRGER/FARVER

BLONDES: 134, 20/22, 769, A791G, A812G. BROWNS: 2/4, 4/6, 8-10/20G, A761G. REDS: SA811G. GREYS: 38, 56/60.

COLOUR: S770

## TAMAKI 27135



S M L

SIZE/STORLEK/STØRRELSE: 53-54 cm

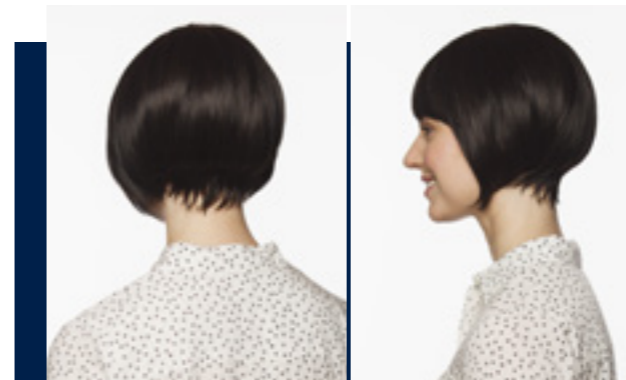
HAIR LENGTH/HÅRLÄNGD/LÆNGDE

FRONT: 10.5 cm | CROWN/TOP: 18 cm | NAPE/NACKE/NAKKE: 6 cm

COLOURS/FÄRGER/FARVER BLONDES: 134, 18/22, 20/22, 769,

S770, A791G, A812G. BROWNS: 2/4, 4/6, 8-10/20G, S12/10, 768.

REDS: S637, SA811G. GREYS: 132, 38, S456, 56, 56/60, 60, 600.



COLOUR: 2/4



## SANGO 27136



S M L

SIZE/STORLEK/STØRRELSE: 53-54 cm

HAIR LENGTH/HÅRLÄNGD/LÆNGDE

FRONT: 10 cm | CROWN/TOP: 33 cm | NAPE/NACKE/NAKKE: 17 cm

COLOURS/FÄRGER/FARVER BLONDES: 134, 20/22, 769, S770,

A812G. BROWNS: 2/4, 4/6, 8-10/20G, 728T, A761G. REDS: 131, S637, SA811G.



COLOUR: A812G



## MYU 27114



SIZE/STORLEK/STØRRELSE: 53-54 cm

HAIR LENGTH/HÅRLÄNGD/LÆNGDE

FRONT: 19 cm

CROWN/TOP: 23 cm

NAPE/NACKE/NAKKE: 19 cm



COLOUR: 4/6

COLOURS/FÄRGER/FARVER

BLONDES: 134, 769, S770, A791G, A812G. BROWNS: 2/4, 4/6, 8-10/20G, A761G. REDS: S637.



## SAKURA LONG 27130



SIZE/STORLEK/STØRRELSE: 53-54 cm

HAIR LENGTH/HÅRLÄNGD/LÆNGDE

FRONT: 21 cm

CROWN/TOP: 45 cm

NAPE/NACKE/NAKKE: 45 cm

COLOURS/FÄRGER/FARVER

BLONDES: 134, 20/22, 769, S770, A791G, A812G. BROWNS: 2/4, 4/6, 8-10/20G, 728T, A761G. REDS: 131, S637, SA811G.



COLOUR: 769



Natural Colours

Ultimate Comfort

Monofilament Bases

Naturlige Färger/farver

Ultimat Comfort

Monofilament

LOTUS | BLUEBELL

**LOTUS**  
BY SENTOO

STYLE OVERVIEW | STIL/MODELLOVERSIKT PAGE 66

The Lotus Collection is an expertly crafted range of wigs providing the best possible fit and comfort, whilst never sacrificing on style. Offering a lace front and differing cap constructions in mono, hand tied or wefted, the collection caters to everybody. Produced out of passion, our highly skilled team had only one aim in mind; stylish, comfortable and natural-looking wigs to suit all ages.

Lotus Collection er en eksklusiv serie av/af peruker/parykker med optimal pasform og komfort - og som aldrig går på kompromis/bekostning med snygga/flotte frisyre/frisurer. Kollektionen har/byder lacefront og olika/forskellige konstruksjoner som mono, handknyttet/håndknyttet/bundet eller med tråns/trense/tresse. Vårt/vores dygtige og engageret design team hadde endast/kun et mål på sinde: elegante, stilrene, behagelige peruker/parykker med et naturligt look, som passer til alle åldrar/aldre.



# 27004 Blossom

S M L



SIZE/STORLEK/STØRRELSE: 55 cm

HAIR LENGTH/HÅRLÄNGD/LÆNGDE

FRONT: 5 cm

CROWN/TOP: 10 cm

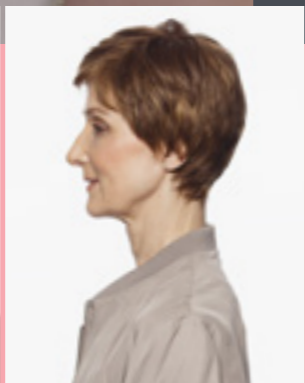
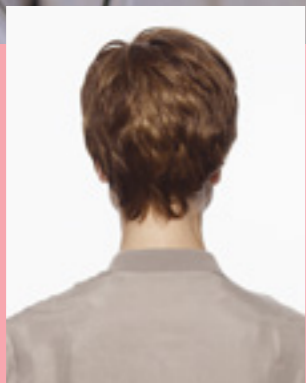
NAPE/NACKE/NAKKE: 5 cm

COLOURS/FÄRGER/FARVER

MELANGE: Aspen (134), Cherry (9/12/18),  
Midnight (4), Sandalwood (8/11/24),  
Walnut (6/10/14), White Oak (18/22).

ROOTED: Aspen Melange (8/22), Birch  
(12/14), Dark Sand (81/85/87/91), Light  
Oak Melange (75/89/92). GREYS: Hickory  
(4565), Iced Melange (38/42/60), Silver (62),  
Smokey Melange (34/36/39).

COLOUR: CHERRY MELANGE



# Dahlia 27005



S M L

SIZE/STORLEK/STØRRELSE: 54 cm

HAIR LENGTH/HÅRLÄNGD/LÆNGDE

FRONT: 8 cm

CROWN/TOP: 10 cm

NAPE/NACKE/NAKKE: 5 cm



COLOUR: SANDALWOOD MELANGE

COLOURS/FÄRGER/FARVER

MELANGE: Cherry (9/12/18), Maple (16/17/20), Midnight (4), Sandalwood (8/11/24),  
Walnut (6/10/14), White Oak (18/22). ROOTED: Aspen Melange (8/22), Birch(12/14), Cherry  
(70/78), Dark Sand (81/85/87/91), Light Oak Melange (75/89/92), Red Chestnut (4/33),  
Sandalwood (72/73/79), Zebrawood (2/60V). GREYS: Iced Melange (38/42/60), Silver (62),  
Smokey Melange (34/36/39).



## Peony 27003



S M L

SIZE/STORLEK/STØRRELSE: 53 cm

HAIR LENGTH/HÅRLÄNGD/LÆNGDE

FRONT: 11 cm

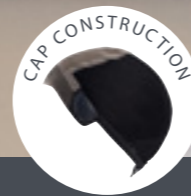
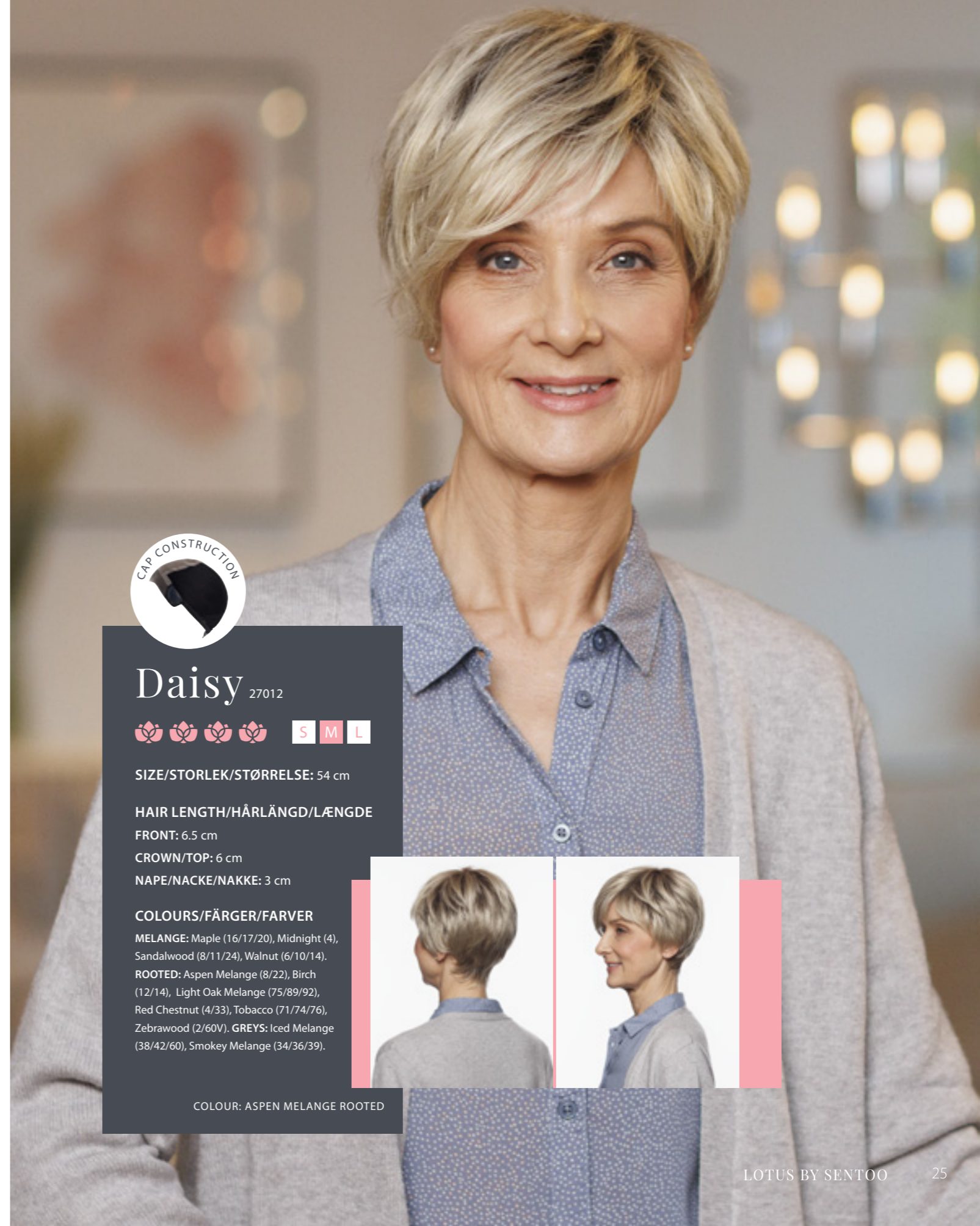
CROWN/TOP: 7 cm

NAPE/NACKE/NAKKE: 5 cm

COLOURS/FÄRGER/FARVER

MELANGE: Aspen (134), Cherry (9/12/18), Sandalwood (8/11/24), Walnut (6/10/14), White Oak (18/22). ROOTED: Dark Sand (81/85/87/91), Light Oak Melange (75/89/92), Cherry (70/78), Tobacco (71/74/76). GREY: Iced Melange (38/42/60), Smokey Melange (34/36/39).

COLOUR: WALNUT MELANGE



## Daisy 27012



SIZE/STORLEK/STØRRELSE: 54 cm

HAIR LENGTH/HÅRLÄNGD/LÆNGDE

FRONT: 6.5 cm

CROWN/TOP: 6 cm

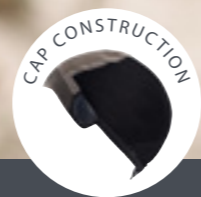
NAPE/NACKE/NAKKE: 3 cm

COLOURS/FÄRGER/FARVER

MELANGE: Maple (16/17/20), Midnight (4), Sandalwood (8/11/24), Walnut (6/10/14). ROOTED: Aspen Melange (8/22), Birch (12/14), Light Oak Melange (75/89/92), Red Chestnut (4/33), Tobacco (71/74/76), Zebrawood (2/60V). GREYS: Iced Melange (38/42/60), Smokey Melange (34/36/39).



COLOUR: ASPEN MELANGE ROOTED



## 27015 Gardenia

S M L

SIZE/**STORLEK**/**STØRRELSE**: 54 cm

HAIR LENGTH/**HÅRLÄNGD**/**LÆNGDE**

FRONT: 14 cm

CROWN/TOP: 16 cm

NAPE/**NACKE**/**NAKKE**: 3 cm

COLOURS/**FÄRGER**/**FARVER**

MELANGE: Cherry (9/12/18), Maple (16/17/20), Midnight (4), Sandalwood (8/11/24), Walnut (6/10/14), White Oak (18/22). **ROOTED**: Aspen Melange (8/22), Birch (12/14), Cherry (70/78), Dark Sand (81/85/87/91), Light Oak Melange (75/89/92), Purple Heart (4/74), Red Chestnut (4/33), Sandalwood (72/73/79).

**GREYS**: Iced Melange (38/42/60), Silver (62), Smokey Melange (34/36/39), Sugar Berry (60/600MP).



COLOUR: ASPEN MELANGE ROOTED

## Tulip 27009



S M L

SIZE/**STORLEK**/**STØRRELSE**: 53 cm

HAIR LENGTH/**HÅRLÄNGD**/**LÆNGDE**

FRONT: 9 cm | CROWN/TOP: 12.5 cm | NAPE/**NACKE**/**NAKKE**: 8 cm

COLOURS/**FÄRGER**/**FARVER** MELANGE: Maple (16/17/20), Midnight (4), Sandalwood (8/11/24), Walnut (6/10/14). **ROOTED**: Light Oak Melange (75/89/92), Red Chestnut (4/33), Tobacco (71/74/76), ZebraWood (2/60V). **GREYS**: Iced Melange (38/42/60), Smokey Melange (34/36/39).



COLOUR: TOBACCO ROOTED



## Lily 27001



S M L

SIZE/**STORLEK**/**STØRRELSE**: 53 cm

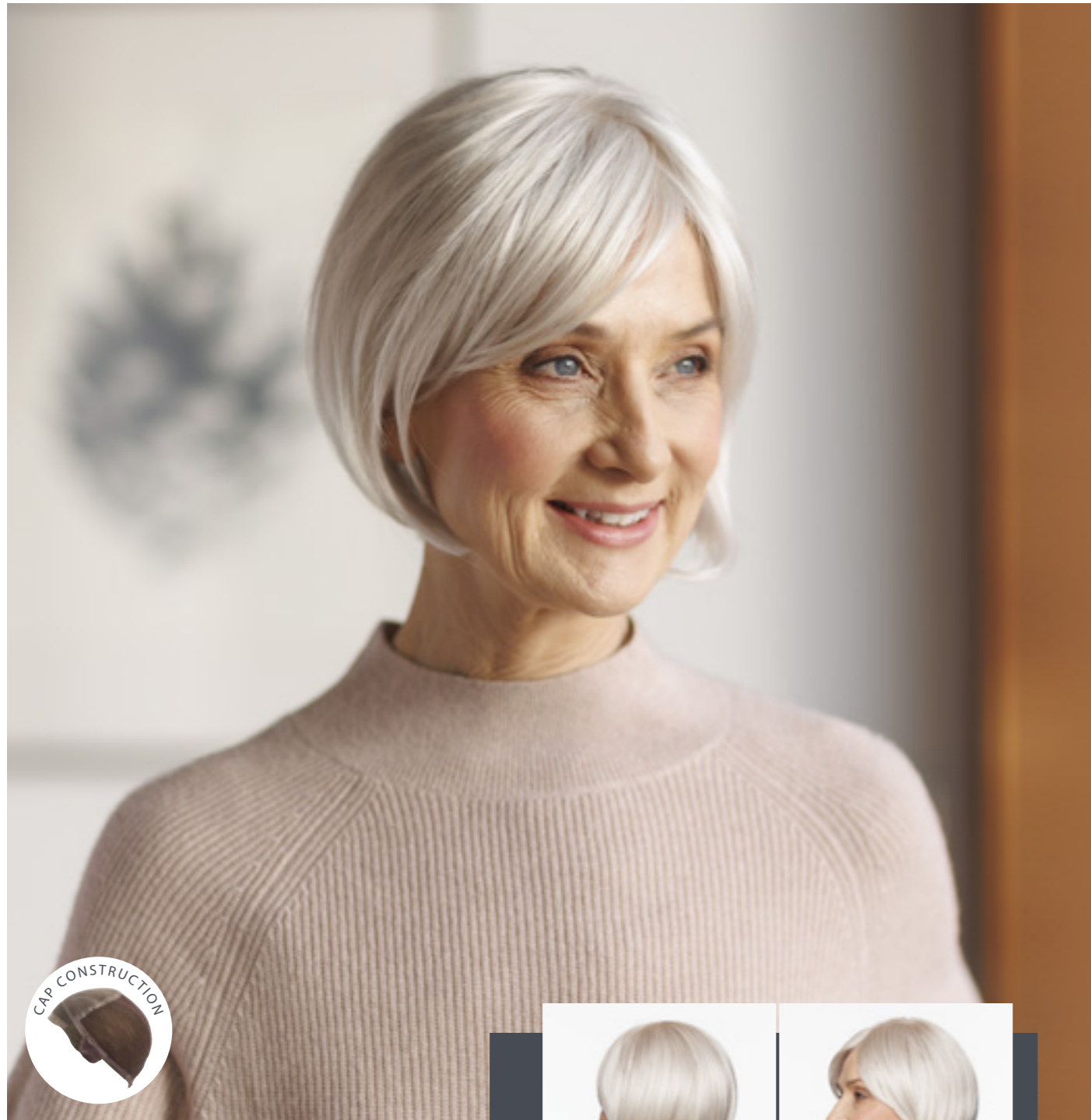
HAIR LENGTH/**HÅRLÄNGD**/**LÆNGDE**

FRONT: 13 cm | CROWN/TOP: 17 cm | NAPE/**NACKE**/**NAKKE**: 10 cm

COLOURS/**FÄRGER**/**FARVER** MELANGE: Cherry (9/12/18), Ember (2/32), Maple (16/17/20), Midnight (4), Sandalwood (8/11/24), Walnut (6/10/14), White Oak (18/22). **ROOTED**: Cherry (70/78), Dark Sand (81/85/87/91), Light Oak Melange (75/89/92), Sandalwood (72/73/79). **GREYS**: Iced Melange (38/42/60), Smokey Melange (34/36/39).



COLOUR: ICED MELANGE



## Jasmine 27002



SIZE/STORLEK/STØRRELSE: 51.5 cm

HAIR LENGTH/HÅRLÄNGD/LÆNGDE

FRONT: 13 cm

CROWN/TOP: 22 cm

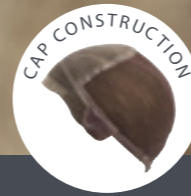
NAPE/NACKE/NAKKE: 6 cm



COLOUR: SILVER

COLOURS/FÄRGER/FARVER

MELANGE: Cherry (9/12/18), Maple (16/17/20), Midnight (4), Sandalwood (8/11/24), Walnut (6/10/14), White Oak (18/22). ROOTED: Aspen Melange (8/22), Birch(12/14), Cherry (70/78), Dark Sand (81/85/87/91), Light Oak Melange (75/89/92), Red Chestnut (4/33), Sandalwood (72/73/79). GREYS: Iced Melange (38/42/60), Silver (62), Smokey Melange (34/36/39), Sugar Berry (60/600MP).



## Iris 27010



SIZE/STORLEK/STØRRELSE: 53 cm

HAIR LENGTH/HÅRLÄNGD/LÆNGDE

FRONT: 20 cm

CROWN/TOP: 22 cm

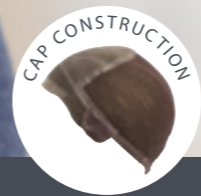
NAPE/NACKE/NAKKE: 6.5 cm

COLOURS/FÄRGER/FARVER

MELANGE: Aspen (134), Ember (2/32), Maple (16/17/20), Midnight (4), Walnut (6/10/14). ROOTED: Light Oak Melange (75/89/92), Tobacco (71/74/76), Zebrawood (2/60V). GREYS: Iced Melange (38/42/60), Sugar Berry (60/600MP).



COLOUR: WALNUT MELANGE



## 27011 Aster

S M L 

SIZE/STORLEK/STØRRELSE: 53 cm

HAIR LENGTH/HÅRLÆNGD/LÆNGDE

FRONT: 10 cm

CROWN/TOP: 26 cm

NAPE/NACKE/NAKKE: 10 cm

COLOURS/FÄRGER/FARVER

MELANGE: Cherry (9/12/18) Maple (16/17/20), Sandalwood (8/11/24), Walnut (6/10/14), White Oak (18/22). ROOTED: Light Oak Melange (75/89/92), Red Chestnut (4/33), Sycamore Melange (6/70/23). GREYS: Driftwood (38), Iced Melange (38/42/60), Silver (62).

COLOUR: LIGHT OAK MELANGE ROOTED



COLOUR: BIRCH LONG ROOTED

COLOURS/FÄRGER/FARVER

MELANGE: Maple (16/17/20), Midnight (4), Walnut (6/10/14), White Oak (18/22). ROOTED: Aspen Melange (8/22), Birch (12/14), Cherry (70/78), Light Oak Melange (75/89/92), Purple Heart (4/74), Red Chestnut (4/33), Sandalwood (72/73/79), Sycamore Melange (6/70/23). GREY: Iced Melange (38/42/60), Silver (62), Sugar Berry (60/600MP).

## Fuchsia 27016

 S M L

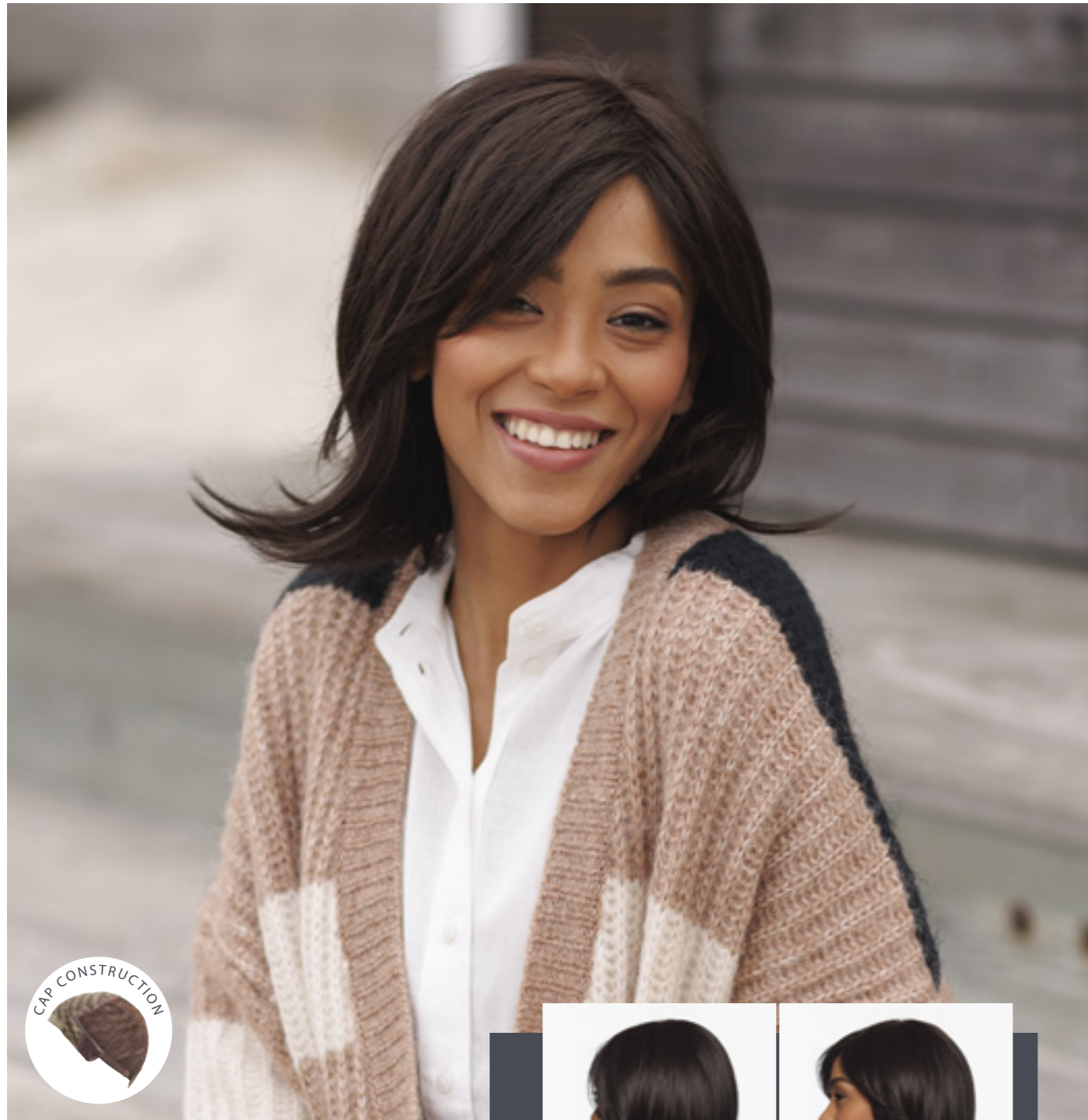
SIZE/STORLEK/STØRRELSE: 56 cm

HAIR LENGTH/HÅRLÆNGD/LÆNGDE

FRONT: 30 cm

CROWN/TOP: 24 cm

NAPE/NACKE/NAKKE: 9 cm



COLOUR: MIDNIGHT

## Hazel <sup>27006</sup>



SIZE/STORLEK/STØRRELSE: 53 cm

HAIR LENGTH/HÅRLÄNGD/LÆNGDE

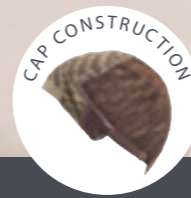
FRONT: 13 cm

CROWN/TOP: 25 cm

NAPE/NACKE/NAKKE: 15 cm

COLOURS/FÄRGER/FARVER

MELANGE: Cherry (9/12/18), Maple (16/17/20), Midnight (4), Sandalwood (8/11/24), Walnut (6/10/14), White Oak (18/22). ROOTED: Aspen Melange (8/22), Birch (12/14), Cherry (70/78), Dark Sand (81/85/87/91), Light Oak Melange (75/89/92), Sandalwood (72/73/79), Sycamore Melange (6/70/23) GREYS: Iced Melange (38/42/60), Smokey Melange (34/36/39).



## Poppy <sup>27008</sup>



SIZE/STORLEK/STØRRELSE: 53 cm

HAIR LENGTH/HÅRLÄNGD/LÆNGDE

FRONT: 32 cm

CROWN/TOP: 36 cm

NAPE/NACKE/NAKKE: 36 cm

COLOURS/FÄRGER/FARVER

MELANGE: Maple (16/17/20), Midnight (4), Walnut (6/10/14), White Oak (18/22). ROOTED: Cherry (70/78), Light Oak Melange (75/89/92), Red Chestnut (4/33), Sandalwood (72/73/79), Sycamore Melange (6/70/23). GREY: Iced Melange (38/42/60), Silver (62), Sugar Berry (60/600MP).



COLOUR: LIGHT OAK MELANGE ROOTED



## 27017 Honesty

S M L

SIZE/STORLEK/STØRRELSE: 56 cm

HAIR LENGTH/HÅRLÆNGD/LÆNGDE

FRONT: 32 cm

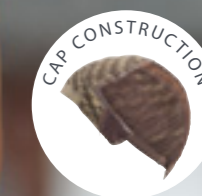
CROWN/TOP: 44 cm

NAPE/NACKE/NAKKE: 40 cm

COLOURS/FÄRGER/FARVER

MELANGE: Maple (16/17/20), Midnight (4), Walnut (6/10/14), White Oak (18/22). ROOTED: Aspen Melange (8/22), Birch (12/14), Cherry (70/78), Light Oak Melange (75/89/92), Purple Heart (4/74), Red Chestnut (4/33), Sandalwood (72/73/79), Sycamore Melange (6/70/23). GREYS: Iced Melange (38/42/60), Silver (62), Sugar Berry (60/600MP).

COLOUR: WALNUT MELANGE



## Bluebell 27007

S M L

SIZE/STORLEK/STØRRELSE: 53 cm

HAIR LENGTH/HÅRLÆNGD/LÆNGDE

FRONT: 38 cm

CROWN/TOP: 48 cm

NAPE/NACKE/NAKKE: 33 cm



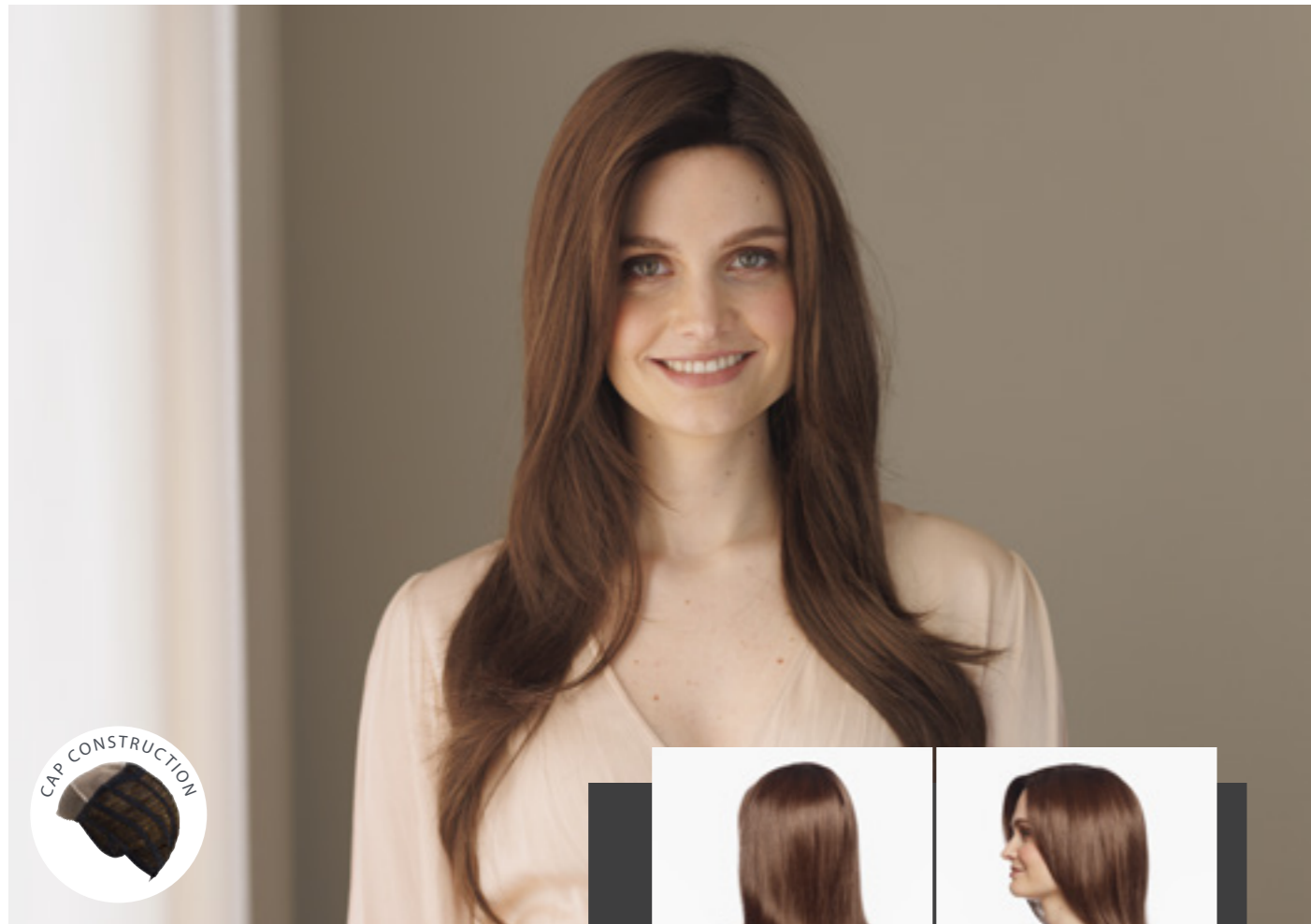
COLOUR: SYCAMORE MELANGE ROOTED

COLOURS/FÄRGER/FARVER

MELANGE: Cherry (9/12/18), Maple (16/17/20), Midnight (4), Walnut (6/10/14), White Oak (18/22). ROOTED: Aspen Melange (8/22), Birch (12/14), Cherry (70/78), Light Oak Melange (75/89/92), Red Chestnut (4/33), Sycamore Melange (6/70/23), Zebra wood (2/60V). GREYS: Driftwood (38), Iced Melange (38/42/60), Silver (62).

# ESSENTIAL

BY SENTOO



COLOUR: RAISIN GLAZE

## NICKY MONO

LACEFRONT - MONO - WEFT

S M L

### NICKY MONO - SMALL 27148

SIZE/STORLEK/STØRRELSE: 52-53 cm

HAIR LENGTH/HÅRLÄNGD/LÆNGDE

FRONT: 32 cm

CROWN/TOP: 40 cm

NAPE/NACKE/NAKKE: 45 cm

COLOURS/FÄRGER/FARVER

BLONDES: 738. BROWNS: 6, 728, Raisin Glaze.

GREY: 56/60.

### NICKY MONO - LARGE 22240

SIZE/STORLEK/STØRRELSE: 54-55 cm

HAIR LENGTH/HÅRLÄNGD/LÆNGDE

FRONT: 32 cm

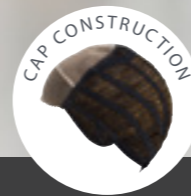
CROWN/TOP: 40 cm

NAPE/NACKE/NAKKE: 45 cm

COLOURS/FÄRGER/FARVER

BLONDES: 12/14/26, 234/263, Gold Blond, 738.

BROWNS: 6, 12, 728, Raisin Glaze. REDS: 731, Dark Rust.



## NICKY MONO LONG 27149

S M L

SIZE/STORLEK/STØRRELSE: 54-55 cm

HAIR LENGTH/HÅRLÄNGD/LÆNGDE

FRONT: 40 cm

CROWN/TOP: 65 cm

NAPE/NACKE/NAKKE: 60 cm

COLOURS/FÄRGER/FARVER

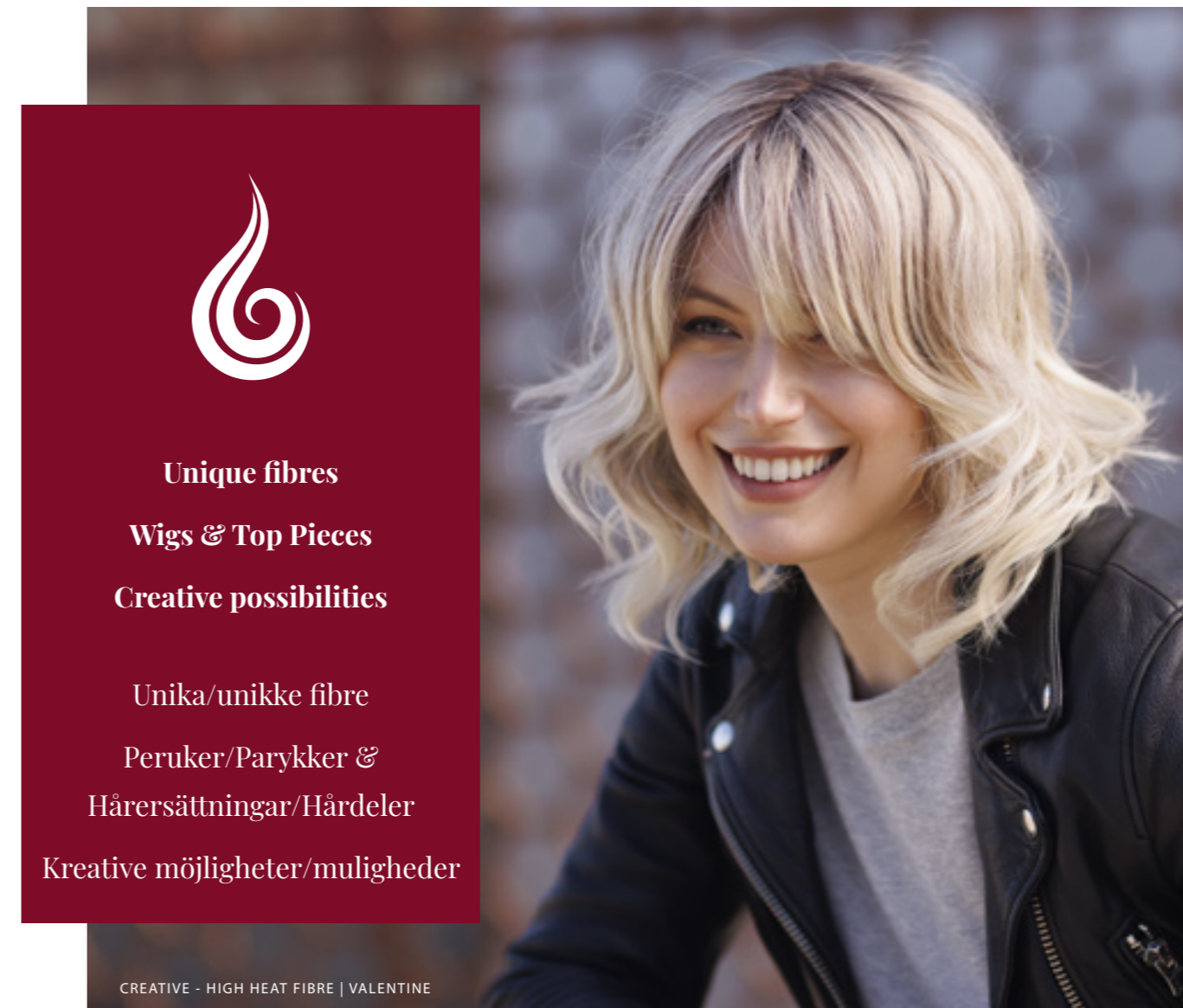
BLONDES: 738, Gold Blond.

BROWN: 6.



COLOUR: 738





CREATIVE - HIGH HEAT FIBRE | VALENTINE



**Unique fibres**  
**Wigs & Top Pieces**  
**Creative possibilities**  
  
 Unika/unikke fibre  
 Peruker/Parykker &  
 Hårersättningar/Hårdeler  
 Kreative möjligheter/muligheter

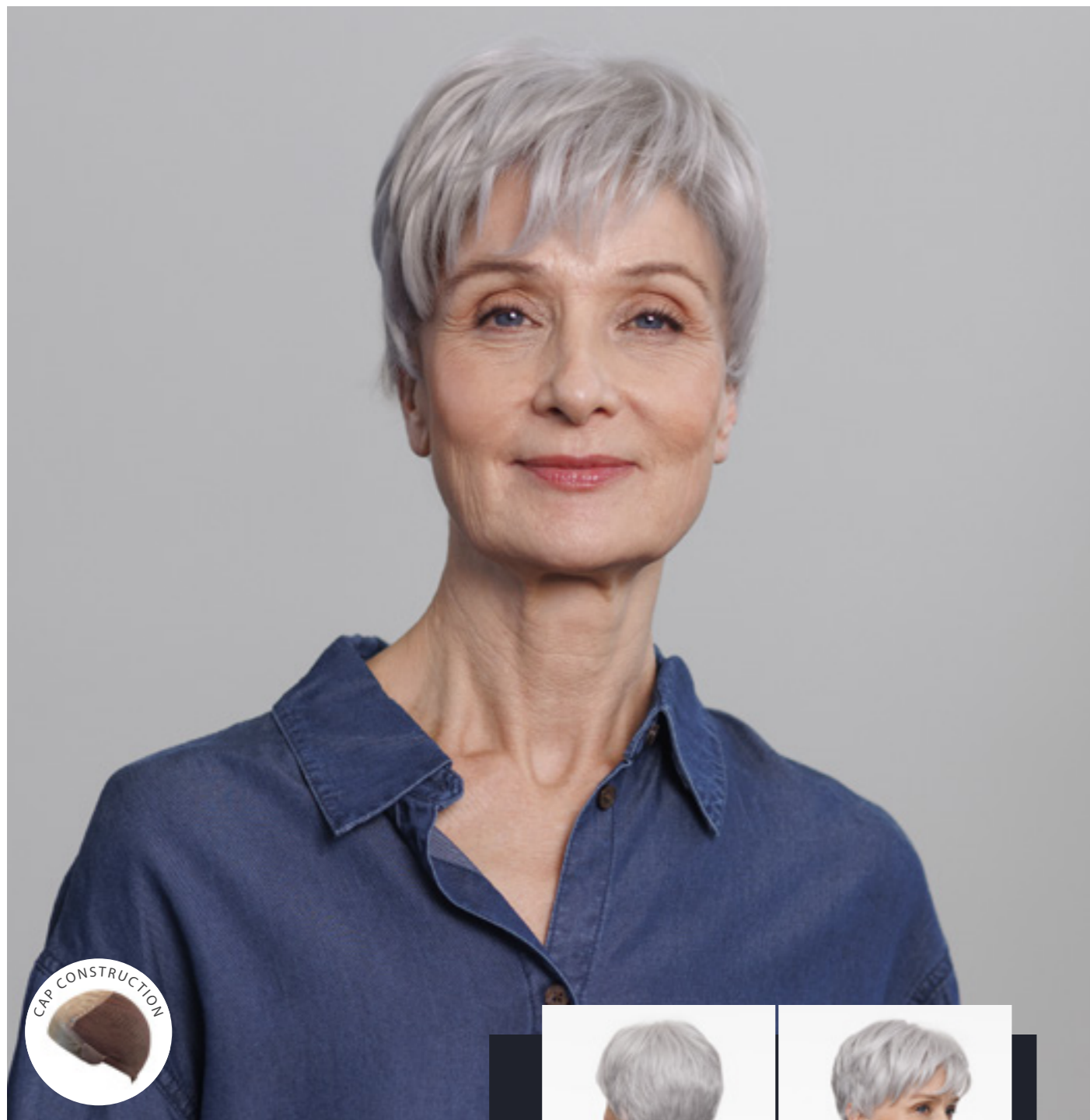
# CREATIVE

BY SENTOO

STYLE OVERVIEW | STIL/MODELLOVERSIKT PAGE 70

Creative is a prestige range of unique products in human hair or the innovative VHair, Cyberhair and other high-heat fibres. In the Creative collection you will find a contemporary selection of styles, perfect for both cutting and styling. With a Creative wig or hairpiece, it is only your imagination that sets the limits to your styling.

Creative er en eksklusiv kolleksjon av unike produkter laget/ fremstillet av ekte/ægte hår eller de innovative fibre VHair, Cyberhair og andre varmeresistente fibre (high heat fibre) – som både kan klippes og styles. Med en peruk/parykk eller hårdel/top piece fra Sentoo Creative er det bare/kun fantasien som setter/sætter grenser/grænser for frisyren.



# MARGERY 27022



S M L

HIGH HEAT FIBRE

HAIR LENGTH/HÅRLÄNGD/LÆNGDE

FRONT: 9 cm  
CROWN/TOP: 10 cm  
NAPE/NACKE/NAKKE: 5.5 cm

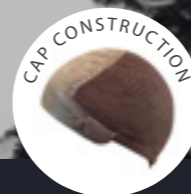


COLOUR: STONE GREY

SIZE/STORLEK/STØRRELSE: 53.5 cm

COLOURS/FÄRGER/FARVER

BLONDES: Light Ash Blonde, Dark Ash Blonde, Medium Gold Blonde.  
BROWNS: Dark Maple Blonde, Medium Brown. GREY: Stone Grey.



# ROSALINE 27027



S M L

HIGH HEAT FIBRE

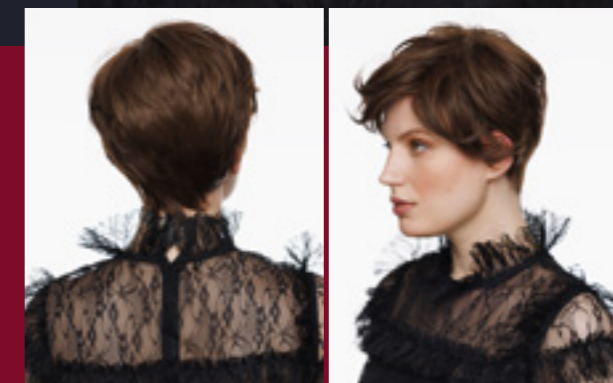
SIZE/STORLEK/STØRRELSE: 53.5 cm

HAIR LENGTH/HÅRLÄNGD/  
LÆNGDE

FRONT: 15.5 cm  
CROWN/TOP: 10 cm  
NAPE/NACKE/NAKKE: 5 cm

COLOURS/FÄRGER/FARVER

BLONDES: Light Ash Blonde, Dark Ash Blonde, Medium Gold Blonde.  
BROWNS: Dark Maple Blonde, Medium Brown. GREY: Stone Grey.



COLOUR: MEDIUM BROWN



27026 **EMILIA**

S M L



**HIGH HEAT FIBRE**

SIZE/**STORLEK**/**STØRRELSE**: 53.5 cm

**HAIR LENGTH/HÅRLÄNGD/LÆNGDE**

FRONT: 14 cm

CROWN/TOP: 19 cm

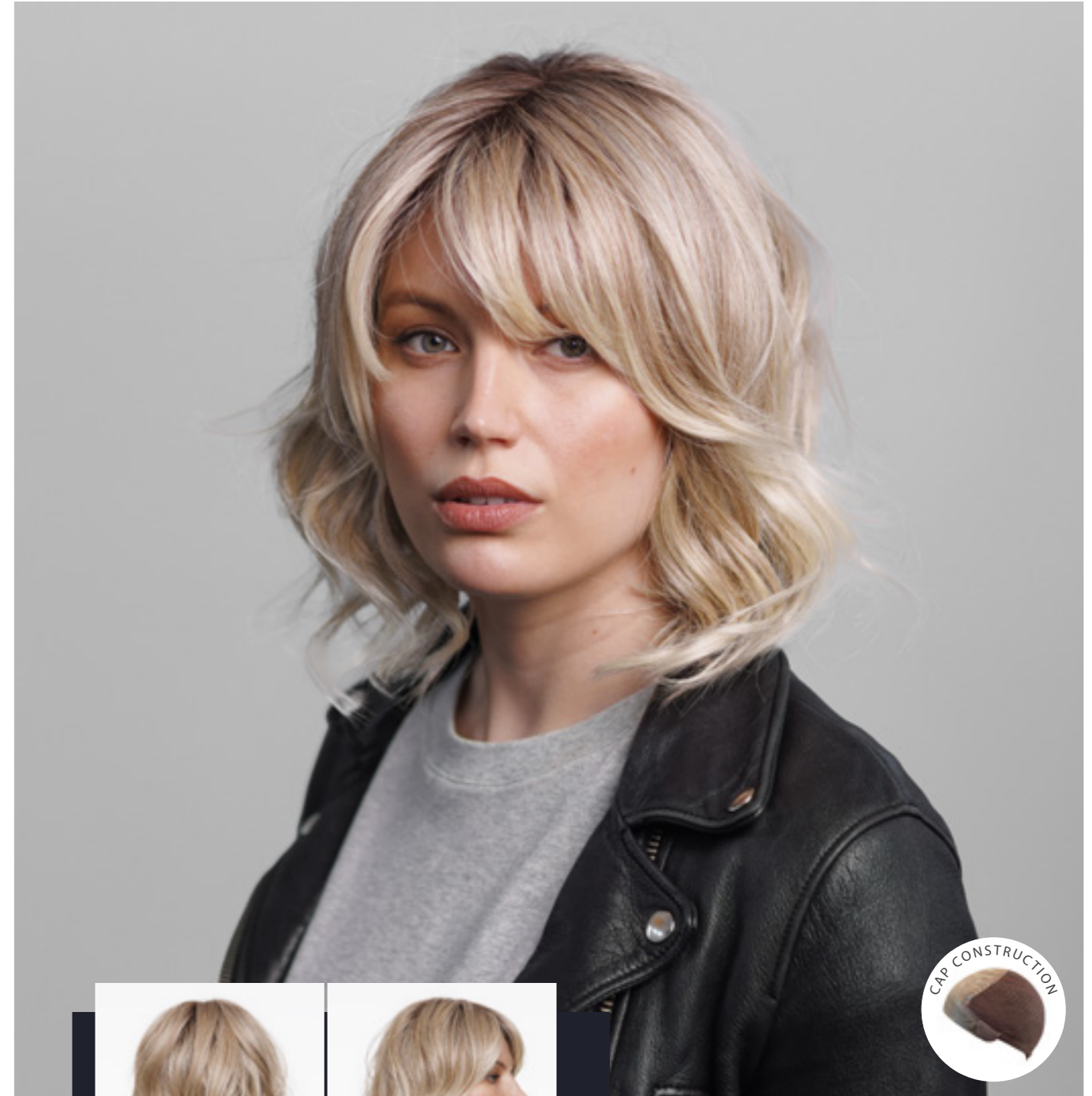
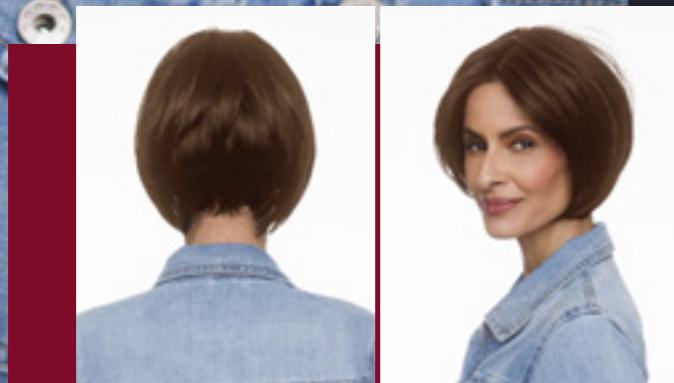
NAPE/**NACKE**/**NAKKE**: 4.5 cm

**COLOURS/FÄRGER/FARVER**

**BLONDES**: Light Ash Blonde, Dark Ash Blonde, Medium Gold Blonde.

**BROWNS**: Dark Maple Blonde, Medium Brown. **GREY**: Stone Grey.

COLOUR: MEDIUM BROWN



**VALENTINE** 27024



S M L

**HIGH HEAT FIBRE**

**HAIR LENGTH/HÅRLÄNGD/LÆNGDE**

FRONT: 11 cm

CROWN/TOP: 28 cm

NAPE/**NACKE**/**NAKKE**: 15 cm

COLOUR: LIGHT ASH BLONDE

SIZE/**STORLEK**/**STØRRELSE**: 53.5 cm

**COLOURS/FÄRGER/FARVER**

**BLONDES**: Light Ash Blonde, Dark Ash Blonde, Medium Gold Blonde.

**BROWNS**: Dark Maple Blonde, Medium Brown.





# OPHELIA 27025



S M L

HIGH HEAT FIBRE

HAIR LENGTH/HÅRLÄNGD/LÆNGDE

FRONT: 30.5 cm

CROWN/TOP: 30.5 cm

NAPE/NACKE/NAKKE: 9 cm

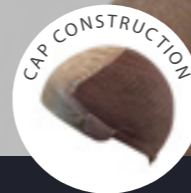


COLOUR: MEDIUM BROWN

SIZE/STORLEK/STØRRELSE: 53.5 cm

COLOURS/FÄRGER/FARVER

BLONDES: Light Ash Blonde, Dark Ash Blonde, Medium Gold Blonde.  
BROWNS: Dark Maple Blonde, Medium Brown. GREY: Stone Grey.



# ISABEL 27023



S M L

HIGH HEAT FIBRE

SIZE/STORLEK/STØRRELSE: 53.5 cm

HAIR LENGTH/HÅRLÄNGD/  
LÆNGDE

FRONT: 32 cm

CROWN/TOP: 46 cm

NAPE/NACKE/NAKKE: 46 cm

COLOURS/FÄRGER/FARVER

BLONDES: Light Ash Blonde, Dark Ash Blonde, Medium Gold Blonde.  
BROWNS: Dark Maple Blonde, Medium Brown.



COLOUR: DARK ASH BLONDE



# LUCA 15410



S M L

100% HUMAN HAIR

HAIR LENGTH/HÅRLÄNGD/LÆNGDE

FRONT: 12 cm

CROWN/TOP: 15 cm

NAPE/NACKE/NAKKE: 6 cm



COLOUR: HONEY BROWN

SIZE/STORLEK/STØRRELSE: 54 cm

COLOURS/FÄRGER/FARVER

BLONDES: Dark Ash Blond, Gold Blond Mix, Starlight Blond. BROWNS: Brown Spice, Dark Chocolate, Honey Brown.



# LORETTA 15411



S M L

100% HUMAN HAIR

SIZE/STORLEK/STØRRELSE: 54 cm

HAIR LENGTH/HÅRLÄNGD/LÆNGDE

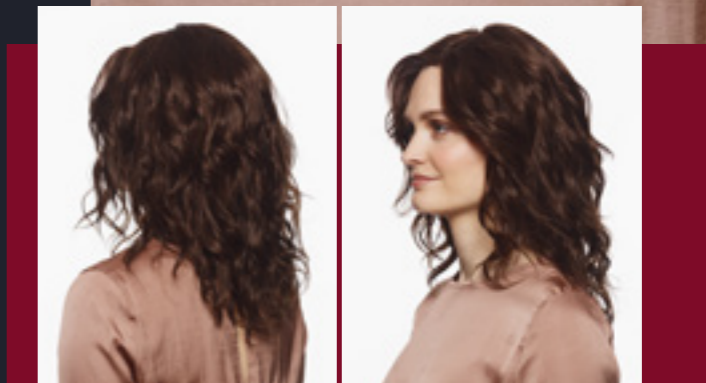
FRONT: 12-15 cm

CROWN/TOP: 20-25 cm

NAPE/NACKE/NAKKE: 24 cm

COLOURS/FÄRGER/FARVER

BLONDES: Dark Ash Blond, Gold Blond, Starlight Blond. BROWNS: Brown Spice, Dark Chocolate, Honey Brown.



COLOUR: DARK CHOCOLATE



### 15412 DALIDA

S M L



100% HUMAN HAIR

SIZE/STORLEK/STØRRELSE: 54-55 cm

HAIR LENGTH/HÅRLÄNGD/  
LÆNGDE

FRONT: 18 cm

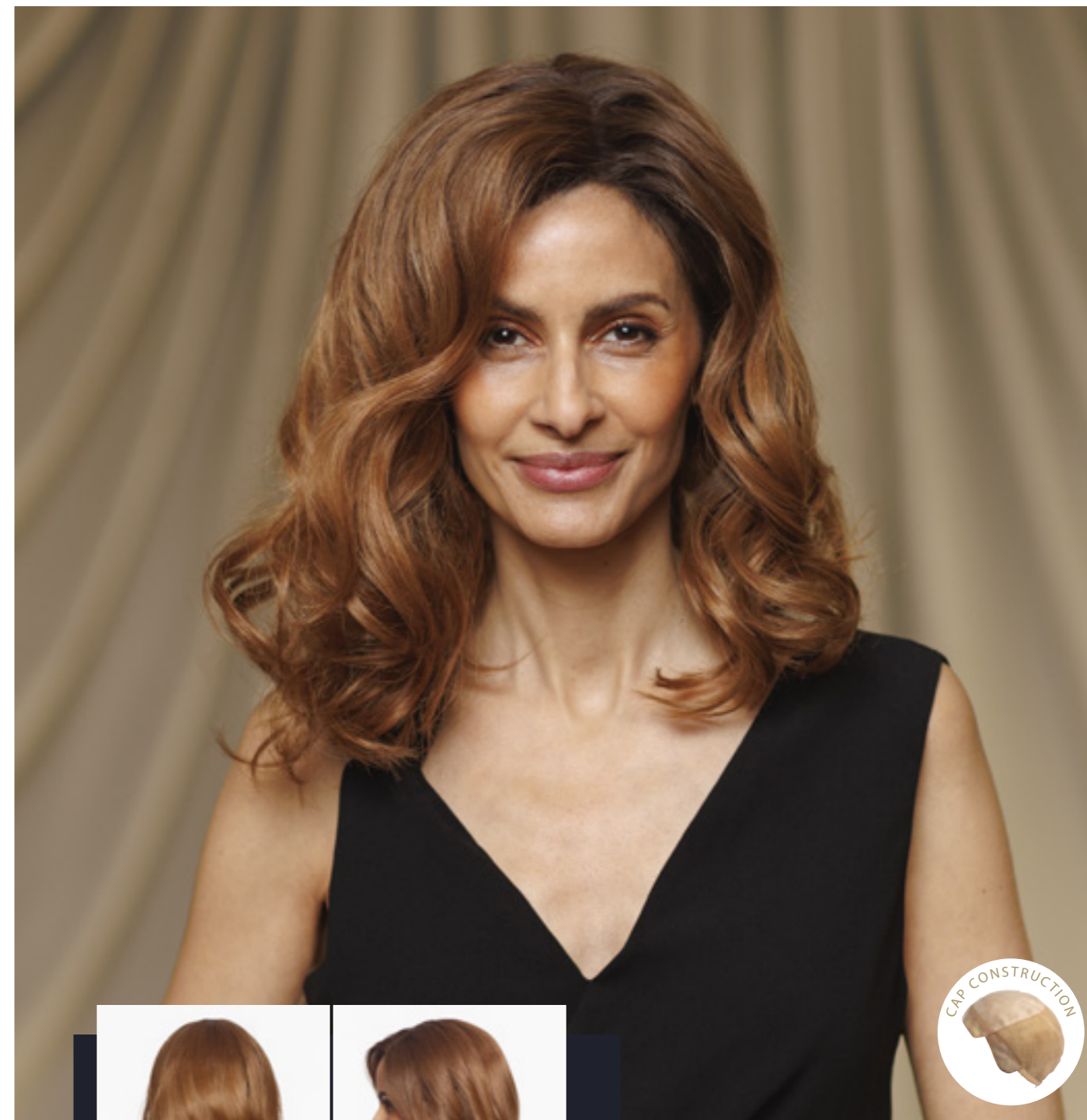
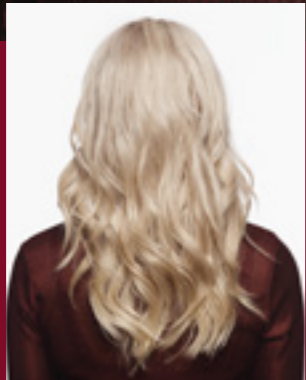
CROWN/TOP: 32 cm

NAPE/NACKE/NAKKE: 34 cm

COLOURS/FÄRGER/FARVER

BLONDES: Dark Ash Blond, Gold Blond Mix, Starlight Blond. BROWNS: Brown Spice, Dark Chocolate, Honey Brown.

COLOUR: COLOURED



### 15413 AMBER



S M L

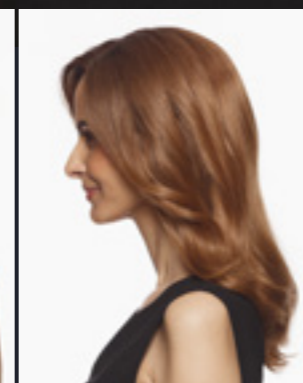
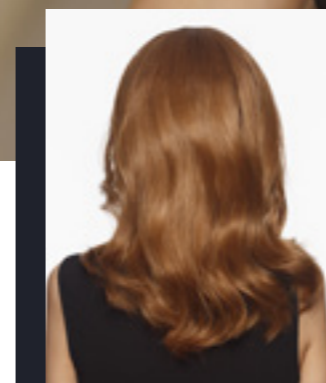
100% HUMAN HAIR

HAIR LENGTH/HÅRLÄNGD/LÆNGDE

FRONT: 30 cm

CROWN/TOP: 30 cm

NAPE/NACKE/NAKKE: 35 cm



COLOUR: COLOURED

SIZE/STORLEK/STØRRELSE: 52-53 cm

COLOURS/FÄRGER/FARVER

BLONDES: Dark Ash Blond, Gold Blond Mix, Mid Blond Mix, Starlight Blond. BROWNS: Brown Spice, Dark Chocolate.



## JADE 16500



S M L

100% HUMAN HAIR

HAIR LENGTH/HÅRLÄNGD/LÆNGDE

FRONT: 35 cm

CROWN/TOP: 35 cm

NAPE/NACKE/NAKKE: 40 cm



COLOUR: 34

SIZE/STORLEK/STØRRELSE: 52-53 cm

COLOURS/FÄRGER/FARVER

BLONDES: 20, 24. BROWNS: 4, 14. RED: 34. GREY: 42.



## DIAMOND 15414



S M L

100% HUMAN HAIR

SIZE/STORLEK/STØRRELSE: 52-53 cm

HAIR LENGTH/HÅRLÄNGD/  
LÆNGDE

FRONT: 35 cm

CROWN/TOP: 45 cm

NAPE/NACKE/NAKKE: 35 cm

COLOURS/FÄRGER/FARVER

BLONDES: Dark Ash Blond, Gold  
Blond Mix, Mid Blond, Starlight Blond.

BROWNS: Brown Spice, Dark Chocolate,  
Espresso.

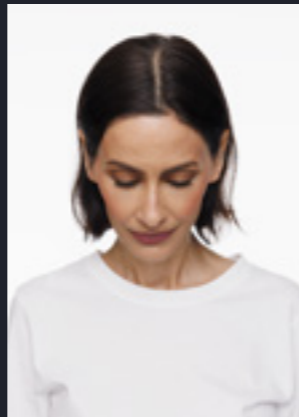
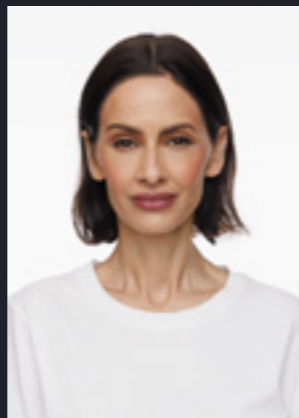
COLOUR: COLOURED



Top Piece



BEFORE



CONSTRUCTION



COLOUR: MEDIUM BROWN

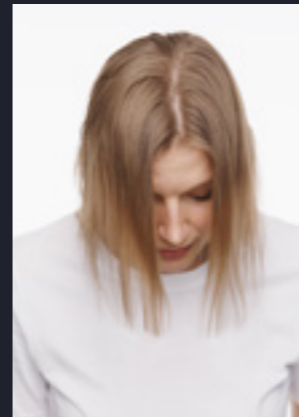
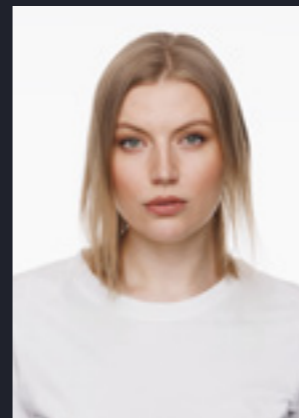
# ALICE 32152 HIGH HEAT FIBRE

SIZE/STORLEK/STØRRELSE: 18 x 8 cm

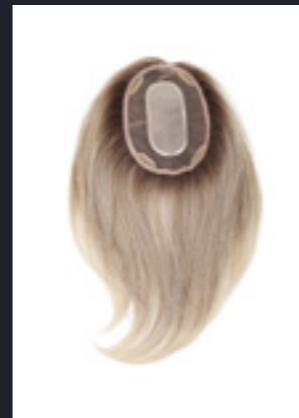
COLOURS/FÄRGER/FARVER

BLONDES: Light Ash Blonde, Dark Ash Blonde, Medium Gold Blonde.  
BROWNS: Dark Maple Blonde, Medium Brown. GREY: Stone Grey.

BEFORE



CONSTRUCTION



COLOUR: LIGHT ASH BLONDE

# ALEXAS 32150 HIGH HEAT FIBRE

SIZE/STORLEK/STØRRELSE: 11.5 x 15 cm

COLOURS/FÄRGER/FARVER

BLONDES: Light Ash Blonde, Dark Ash Blonde, Medium Gold Blonde.  
BROWNS: Dark Maple Blonde, Medium Brown. GREY: Stone Grey.

Top Piece

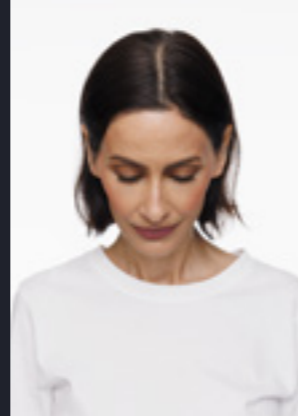
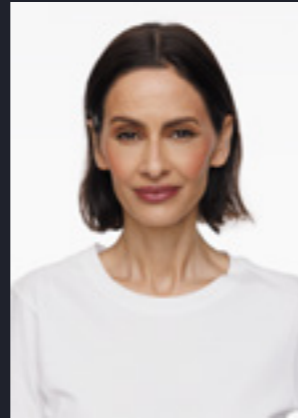


Top Piece

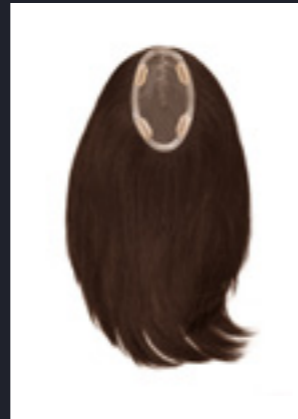


COLOUR: MEDIUM BROWN

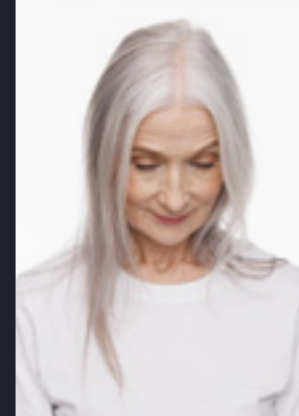
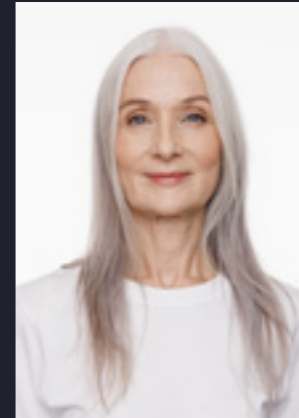
BEFORE



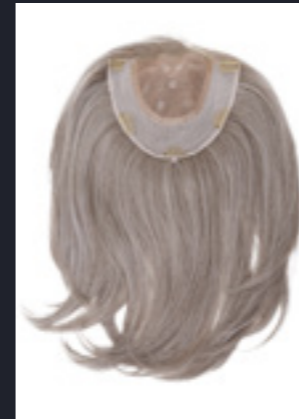
CONSTRUCTION



BEFORE



CONSTRUCTION



Top Piece



COLOUR: STONE GREY

# DION 32151 HIGH HEAT FIBRE

SIZE/STORLEK/STØRRELSE: 8 x 13.5 cm

COLOURS/FÄRGER/FARVER

BLONDES: Light Ash Blonde, Dark Ash Blonde, Medium Gold Blonde.  
BROWNS: Dark Maple Blonde, Medium Brown. GREY: Stone Grey.

# ALBANY 32153 HIGH HEAT FIBRE

SIZE/STORLEK/STØRRELSE: 23 x 22.5 cm

COLOURS/FÄRGER/FARVER

BLONDES: Light Ash Blonde, Dark Ash Blonde, Medium Gold Blonde.  
BROWNS: Dark Maple Blonde, Medium Brown. GREY: Stone Grey.

SYNTHETIC HAIR

- PREMIUM
- LOTUS
- ESSENTIAL



**S SHAMPOO**  
290 ML | 80045  
1000 ML | 80050



**S SHAMPOO NO PERFUME**  
290 ML | 80043



**S CONDITIONER**  
290 ML | 80044  
1000 ML | 80055



**S CONDITIONER NO PERFUME**  
290 ML | 80042



**S SPRAY CONDITIONER**  
250 ML | 80035



**S ENHANCER**  
237 ML | 80189



**SENTOO PRODUCTS**  
SHAMPOO 125 ML | 80038  
SPRAY CONDITIONER 125 ML | 80039

HIGH HEAT FIBRE, VHAIR/CYBERHAIR

- CREATIVE



**X SHAMPOO**  
250 ML | 80285  
1000 ML | 80287



**X CONDITIONER**  
250 ML | 80273  
1000 ML | 80275



**X DEEP CONDITIONER**  
250 ML | 80276  
1000 ML | 80278



**X EVERYDAY CONDITIONER**  
250 ML | 80279



**X CONTROL SPRAY**  
250 ML | 80281



**PURE COVER**  
150 ML | 80906

HUMAN HAIR

- CREATIVE



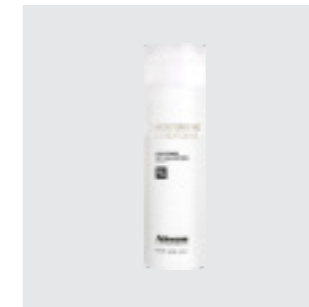
**HYDRATING SHAMPOO**  
250 ML | 80305



**EXFOLIATING SHAMPOO**  
250 ML | 80307



**REFRESHING PLATINIUM SHAMPOO**  
250 ML | 80306



**MOISTURISING CONDITIONER**  
200 ML | 80308



**LEAVE-IN CONDITIONER**  
150 ML | 80309



**SERUM**  
50 ML | 80310



OUR PRODUCTS ARE PROVIDED TO CLIENTS WITH CARE ADVICE. TILL VÅRA PRODUKTER MEDFÖLJER ETT SKÖTSELRÅD TILL KUND. PLEIERÅD/PLEJERÅD TIL KUNDE LEVERES SAMMEN MED ALLE VÅRE/VORES PRODUKTER.

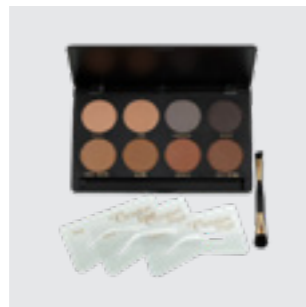
CHRISTIAN FAYE | EYEBROW POWDER

THE PACKAGE CONTAINS:

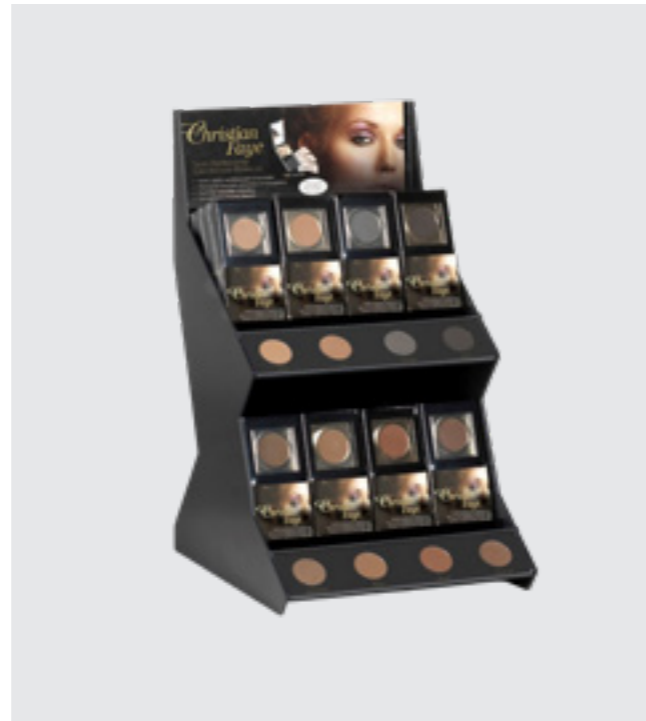
1. EYEBROW POWDER
2. BRUSH/PENSEL
3. EYEBROW STENCIL/MALL/SKABELONER



**EYEBROW POWDER**  
99516



**EYEBROW TESTER  
PROFESSIONAL KIT**  
99517



**EYEBROW DISPLAY  
SALONG/SALON**  
99518

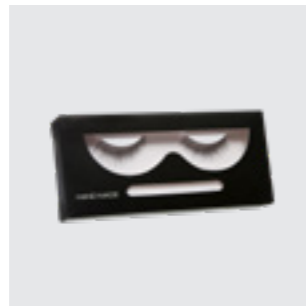
EYEBROW COLOURS:



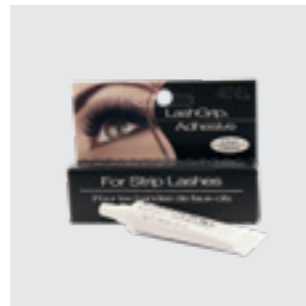
EYELASHES AND BROWS



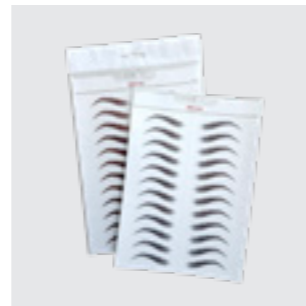
**EYELURE**  
PRE-GLUED  
SJÄLVHÄFTANDE/SELVHÆFTENDE  
Black 031 | 92227-031



**EYELASHES T/B**  
Black | 92060  
Brown | 92061  
**EYELASH 101**  
Black | 92069

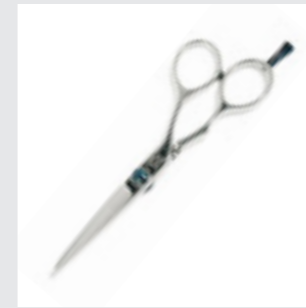


**EYELASH ADHESIVE**  
ÖGONFRANSLIM/ ØJENVIPPELIM  
92054

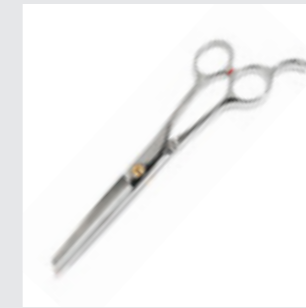


**EYEBROW TATTOO**  
ÖGON/ØYENBRYN TATTOO  
SJÄLVHÄFTANDE/SELVHÆFTENDE  
Black | 99519  
Dark Brown | 99519

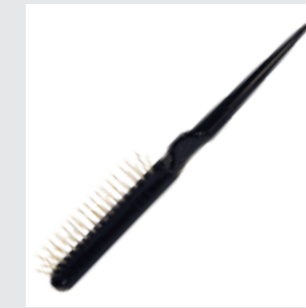
WIGS - ACCESSORIES



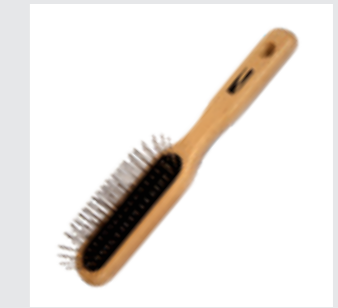
**CYBERHAIR SCISSOR  
REGULAR**  
SAX/SAKS | 97147



**CYBERHAIR SCISSOR  
THINNING**  
SAX/SAKS | 97148



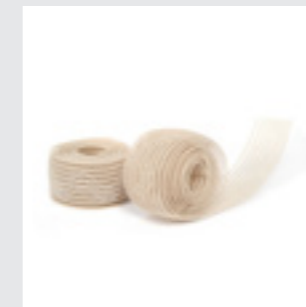
**MINI BRUSH**  
BORSTE/BØRSTE  
99060



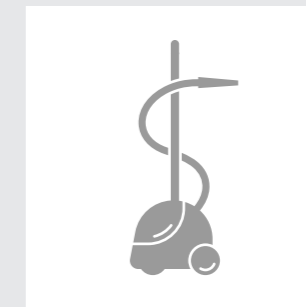
**CYBERHAIR BRUSH**  
BORSTE/BØRSTE  
92014



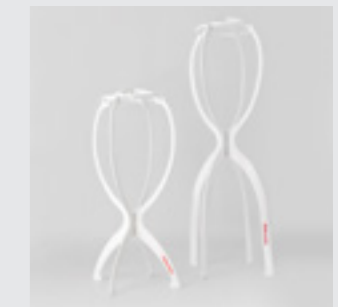
**PU SHEET/ARK**  
PU | 80163



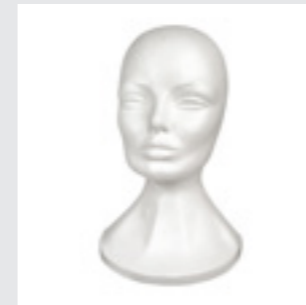
**SILICON BAND & SHEET**  
SILICON BAND | 92323  
SILICON SHEET | 80166



**STEAM TOOL**  
ÅNGA/DAMP MASKIN | 92111



**WIGTREE**  
MIDI | 92104  
MAXI | 92259



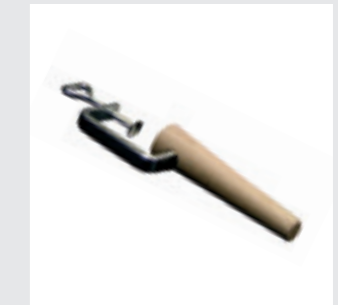
**POLYHEAD | MEDIUM**  
CELL-PLASTHUVUD/HOVED  
92090



**POLYHEAD | SMALL**  
CELL-PLASTHUVUD/HOVED  
92091



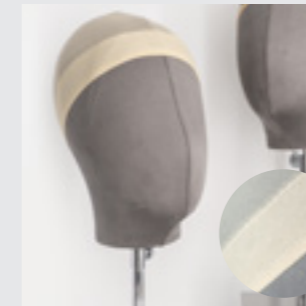
**POLYHEAD | MAN**  
CELL-PLASTHUVUD/HOVED  
92141



**TABLE STAND | WOOD**  
BORDSHÅLLARE/HOLDER I TRÅ/TRÆ  
91053



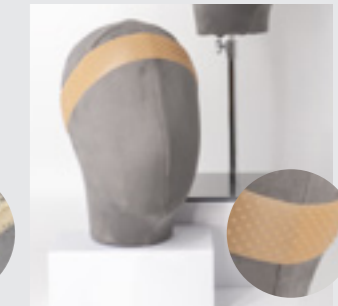
**STAND | SUCTION FOOT**  
STATIV - SUGPROPP  
92261



**WIG CAP | FINE MESHED**  
Colours: Beige, Mid Brown  
92101



**WIG CAP | WIDE MESHED, OPEN**  
Colours: Beige, Brown  
92105



**WIG FIX**  
ANTI-SLIP, ONE SIZE  
Colours: Light Beige, Beige, Brown  
92262

DO YOU HAVE QUESTIONS ABOUT OUR PRODUCTS OR WANT ADVICE – PLEASE CONTACT US.  
HAR DU FRÅGOR/SPØRSMÅL OM VÅRA/VORES PRODUKTER ELLER VILL HA RÅDGIVNING/RÅD – HØR AV DIG TILL OSS/KONTAKT OS.

HAIRLOCS



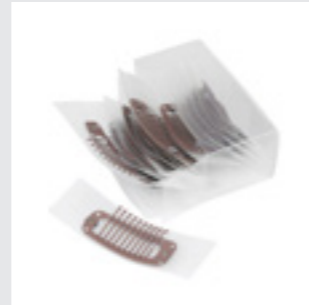
**HAIRLOC - MINI**  
2 CM | 92026  
Colours: Black, Brown, Beige



**HAIRLOC - MIDI**  
2.8 CM | 92025  
Colours: Black, Brown, Beige



**HAIRLOC - MAXI**  
3.2 CM | 92024  
Colours: Black, Brown, Beige



**HAIRLOC PU**  
92204  
Colours: Brown, Beige

TAPE AND CLEANER

**CML STRIPS** | 90000  
Double-sided transparent tape 72 pieces each 12 mm.  
Dubbelhäftande/Dobbelthæftende, transparent/  
gennemsigtig tape. 72 stk, 12 mm bitar/stykker.

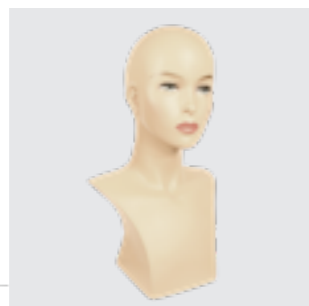
**TAPE** | 90002  
Double-sided fabric-like non-transparent tape on roll  
30 mm x 3 m. Dubbelhäftande/Dobbelthæftende/sidet,  
vävliknande/vevslignende/vævslignende, ikke transparent  
tape på rulle, 30 mm/3 m.

**TOUPÉMA TAPE** | 90004  
Double-sided transparent tape on roll 25 mm/5 m.  
Dubbelhäftande/Dobbelthæftende/sidet, transparent/  
gennemsigtig tape på rulle, 25 mm/5 m.

**ADMATTE STRIPS** | 90053  
Double-sided waterproof transparent tape 25 pieces  
each 2.5cm x 7cm / package. Dubbelhäftande/Dobbel-  
thæftende/sidet, vatten/vannfast, transparent/gennemsigtig  
tape 25 stk. 2,5 cm x 7 cm biter/stykker / pakke.

**S CLEANER**  
290 ML | 80058  
1000 ML | 80060  
Cleans and removes tape and tape residues.  
Rengjør og tar bort/fjerner tape og taperester.

DISPLAY AND STANDS



**MANNEQUIN HEAD**  
SKYLTHUVUD/UDSTILLINGSHOVED  
91067



**TOP HOLDER**  
91069



**WIG STAND**  
BLACK | 91081 – BEIGE | 91080



**FLOOR STAND**  
GOLVSTATIV/GULVSTATIV  
91068

STYLING TOOL

**MAGNETICA**  
93122

**Magnetica styling tool** – is designed to meet every need. With its ceramic and tourmaline plate, Magnetica not only achieves flawlessly straight hair, it also allows you to create curls and defined waves with surprising ease. Equipped with the latest PTC heating technology and with adjustable temperatur 80-230°C.

**Magnetica styling tool** – är designad för att möta/opfylde alla behov. Med sina tourmaline keramiska plattor/plader uppnår/opnår Magnetica inte bara felfritt/fejlfrit rakt/glat hår, utan ger dig också möjligheten/muligheden att skapa/skabe vackra/smukke lockar/krøller och definierade vågor/bølger med överraskande lätthet/lethed. Utrustad/utstyret med den senaste/nyeste PTC-värmetekniken och med justerbar temperatur 80-230°C.

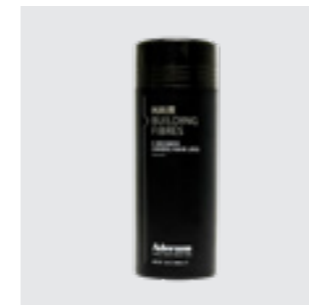


INFORMATION:

Dual Voltage, 110-240V.  
PTC heater technology, fast heat up.  
Wide tourmaline ceramic heat plates.  
Plate size: 95x36 mm.

Adjustable temperatur 80-230°C.  
Lockable handle for storage.  
60 minute "auto shut off" safety feature.  
2.5M 360° degree swivel power cord.

ADERANS HAIR FIBRE



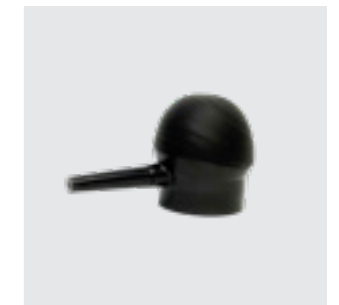
**HAIR BUILDING FIBRE**  
25 G | 82104



**HAIRLINE POWDER**  
4 G | 82106



**HAIR HOLDING SPRAY**  
100 ML | 82105



**SPRAY APPLICATOR**  
99520



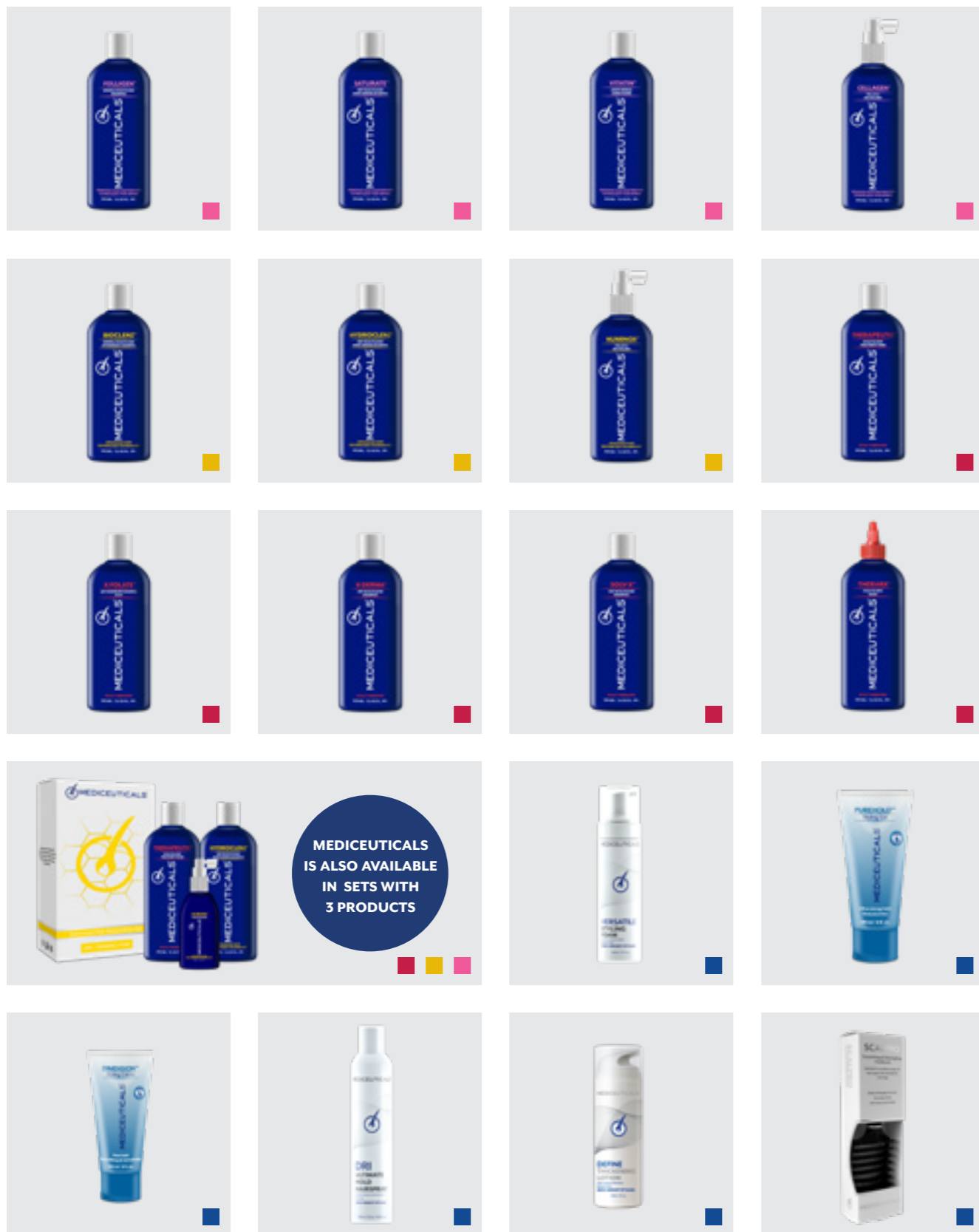
**Aderans Hair Fibre and Powder** – are cosmetic products for men and women to cover light spots on the head. The result is full hair with natural hair structure. Quick and easy self-application. Conceals thin hair immediately.

**Aderans Hair Fibre och/og Powder** – är kosmetikkprodukter for/til menn/ mænd og kvinner som dekker/dækker tynt hår og flekkvist/pletvist hårtap/hårtap. Resultatet er fyldig hår med naturlig hårstruktur. Påføres snabbt/raskt/hurtigt og enkelt av/af brukeren/brugerens selv. Døljer/skjuler tynt hår umiddelbart/med det samme.

COLOURS/FÄRGER/FARVER:



SCALP AND HAIR LOSS TREATMENT PRODUCTS



MEDICEUTICALS. PRODUCTS FOR HAIR LOSS AND SCALP PROBLEMS.  
HÅRPRODUKTER VID HÅRAV FALL/HÅRTAB OCH HÅRBOTTENPROBLEM/HÅRBUNDSPROBLEMER



Mediceuticals Advanced Hair Restoration Technology and Scalp Therapies products help to gently cleanse, soothe and moisturize the scalp – to create the best conditions for keeping both hair follicles and scalp in optimal condition. Stimulates hair growth and strengthens thin or weak hair.

Mediceuticals Advanced Hair Restoration Technology- och Scalp Therapies produkter, hjälper till att varsamt/skänsomt rengöra, lugna/berolige och återfukta /tilføre den fugt hårbotten – för att skapa bästa förutsättningar/best mulige forutsetninger att hålla/holde både hårsäckar/hårsekkende och hårbotten/hodebunnen i optimalt skick/stand. Stimulerar ny hårväxt/hårvækst och stärker/styrker tunt/tynt eller svagt/svakt hår.

HAIR LOSS - WOMEN

<b>NORMAL HAIR/NORMALT HÅR</b>	
FOLLIGEN SHAMPOO - 250 ML	80931
FOLLIGEN SHAMPOO - 1000 ML	80932
<b>Women Hair Restoration Kit</b>	80939
Folligen Shampoo 250 ml, Collagen Revitalizer 125 ml och Vitatin Conditioner 250 ml.	
<b>DRY HAIR/TORRT HÅR/TØRT HÅR</b>	
SATURATE SHAMPOO - 250 ml	80933
SATURATE SHAMPOO - 1000 ml	80934
<b>Women Hair Restoration Kit</b>	80940
Saturate Shampoo 250 ml, Collagen Revitalizer 125 ml och Vitatin Conditioner 250 ml.	
<b>CONDITIONER</b>	
VITATIN CONDITIONER - 250 ml	80935
VITATIN CONDITIONER - 1000 ml	80936
<b>REVITALIZER</b>	
CELLAGEN REVITALIZER - 125 ml	80937
CELLAGEN REVITALIZER - 250 ml	80938

HAIR LOSS - MEN

<b>NORMAL HAIR/NORMALT HÅR</b>	
BIOCLENZ SHAMPOO - 250 ml	80923
BIOCLENZ SHAMPOO - 1000 ml	80924
<b>Hair Restoration Kit</b>	80929
Bioclenz Shampoo 250 ml, Numinox 125 ml och Therapeutic Conditioner 250 ml.	
<b>DRY HAIR/TORRT HÅR/TØRT HÅR</b>	
HYDROCLENZ SHAMPOO - 250 ml	80925
HYDROCLENZ SHAMPOO - 1000 ml	80926
<b>Hair Restoration Kit</b>	80930
Hydroclenz Shampoo 250 ml, Numinox 125 ml och Therapeutic Conditioner 250 ml.	
<b>REVITALIZER</b>	
NUMINOX REVITALIZER - 125 ml	80927
NUMINOX REVITALIZER - 250 ml	80928

SCALP TREATMENT

<b>DANDRUFF/MJÄLL/FLASS/SKÆL</b>	
X-FOLATE SHAMPOO - 250 ml	80942
X-FOLATE SHAMPOO - 1000 ml	80943
<b>Scalp Treatment Kit</b>	80950
Therax Skin & Scalp Wash 250 ml, X-Folate Shampoo 250 ml och Therapeutic Conditioner 250 ml.	
<b>DRY SCALP/TORR HÅRBOTTEN/TØRR HODEBUNN</b>	
X-DERMA SHAMPOO - 250 ml	80944
X-DERMA SHAMPOO - 1000 ml	80945
<b>Scalp Treatment Kit</b>	80951
Therax Skin & Scalp Wash 250 ml, X-Derma Shampoo 250 ml och Therapeutic Conditioner 250 ml.	
<b>OILY SCALP/FET HÅRBOTTEN/ FET/OLJET/ FEDTET HODEBUNN</b>	
SOLV-X SHAMPOO - 250 ml	80946
SOLV-X SHAMPOO - 1000 ml	80947
<b>Scalp Treatment Kit</b>	80952
Therax Skin & Scalp Wash 250 ml, Solv-X Shampoo 250 ml och Therapeutic Conditioner 250 ml.	
<b>CONDITIONER</b>	
THERAPEUTIC CONDITIONER - 250 ml	80948
THERAPEUTIC CONDITIONER - 1000 ml	80949
<b>SKIN &amp; SCALP WASH</b>	
THERARX SKIN & SCALP WASH - 250 ml	80941

STYLING

<b>STYLING PRODUCTS/PRODUKTER</b>	
VERSATILE STYLING MOUSSE - 200 ml	80958
PUREHOLD STYLING GEL - 180 ml	80957
DIMENSION STYLING CREME - 180 ml	80956
DRI HAIRSPRAY - 350 ml	80955
DEFINE THICKENING LOTION - 150 ml	80953
<b>OTHER PRODUCTS/ÖVRIGA/ANDRE PRODUKTER</b>	
SCALPRO - HAIRBRUSH	95101
HAIR SPA	92260



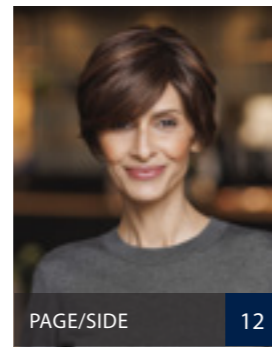
DO YOU HAVE QUESTIONS ABOUT OUR PRODUCTS OR WANT ADVICE – PLEASE CONTACT US.  
HAR DU FRÅGOR/SPÖRSMÅL OM VÅRA/VORES PRODUKTER ELLER VILL HA RÅDGIVNING/RÅD – HÖR AV DIG TILL OSS/KONTAKT OS.

# PREMIUM

BY SENTOO

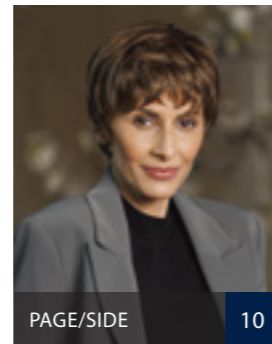


lacefront - mono - hand-tied - wefted  
 lacefront - mono - handknuten - träns  
 lacefront - mono - håndknyttet - trense



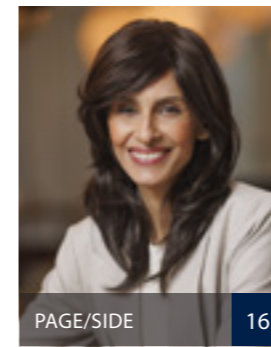
PAGE/SIDE 12

**KINU** 27133   
**SIZE/STORLEK/STØRRELSE:**  53-54 cm  
**HAIR LENGTH/HÅRLÄNGD/LÆNGDE**  
 FRONT: 14 cm  
 CROWN/TOP: 15 cm  
 NAPE/NACKE/NAKKE: 4 cm  
**COLOURS/FÄRGER/FARVER**  
 BLONDES: 134, 18/22, 20/22, 769, S770, A791G, A812G. BROWNS: 2/4, 4/6, 8-10/20G, S12/10, 768. REDS: S637, SA811G. GREYS: 132, 38, S456, 56, 56/60, 60, 600.



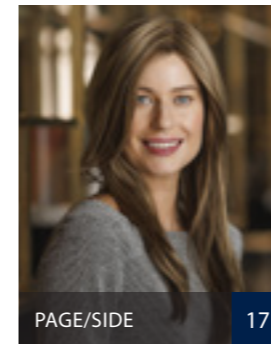
PAGE/SIDE 10

**KYU** 27111   
**SIZE/STORLEK/STØRRELSE:**  53-54 cm  
**HAIR LENGTH/HÅRLÄNGD/LÆNGDE**  
 FRONT: 10 cm  
 CROWN/TOP: 10 cm  
 NAPE/NACKE/NAKKE: 5 cm  
**COLOURS/FÄRGER/FARVER**  
 BLONDES: 134, 18/22, 20/22, 769, A791G.  
 BROWNS: 1B, 2/4, 4/6, 8-10/20G, S12/10, 768.  
 REDS: S637. GREYS: 135, 38, S456, 56, 56/60, 60, 600.



PAGE/SIDE 16

**MYU** 27114   
**SIZE/STORLEK/STØRRELSE:**  53-54 cm  
**HAIR LENGTH/HÅRLÄNGD/LÆNGDE**  
 FRONT: 19 cm  
 CROWN/TOP: 23 cm  
 NAPE/NACKE/NAKKE: 19 cm  
**COLOURS/FÄRGER/FARVER**  
 BLONDES: 134, 769, S770, A791G, A812G.  
 BROWNS: 2/4, 4/6, 8-10/20G, A761G. REDS: S637.



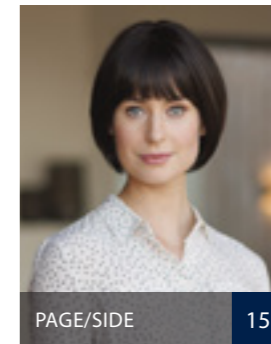
PAGE/SIDE 17

**SAKURA LONG** 27130   
**SIZE/STORLEK/STØRRELSE:**  53-54 cm  
**HAIR LENGTH/HÅRLÄNGD/LÆNGDE**  
 FRONT: 21 cm  
 CROWN/TOP: 45 cm  
 NAPE/NACKE/NAKKE: 45 cm  
**COLOURS/FÄRGER/FARVER**  
 BLONDES: 134, 20/22, 769, S770, A791G, A812G.  
 BROWNS: 2/4, 4/6, 8-10/20G, 728T, A761G. REDS: 131, S637, SA811G.



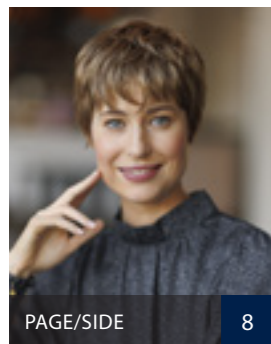
PAGE/SIDE 14

**SORA PETITE** 27138   
**SIZE/STORLEK/STØRRELSE:**  51 cm  
**HAIR LENGTH/HÅRLÄNGD/LÆNGDE**  
 FRONT: 7.5 cm  
 CROWN/TOP: 19 cm  
 NAPE/NACKE/NAKKE: 7 cm  
**COLOURS/FÄRGER/FARVER**  
 BLONDES: 134, 20/22, 769, A791G, A812G.  
 BROWNS: 2/4, 4/6, 8-10/20G, A761G.  
 REDS: SA811G. GREYS: 38, 56/60.





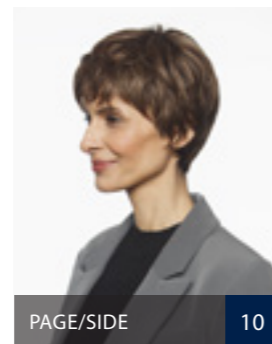
PAGE/SIDE 15

**TAMAKI** 27135   
**SIZE/STORLEK/STØRRELSE:**  53-54 cm  
**HAIR LENGTH/HÅRLÄNGD/LÆNGDE**  
 FRONT: 10.5 cm  
 CROWN/TOP: 18 cm  
 NAPE/NACKE/NAKKE: 6 cm  
**COLOURS/FÄRGER/FARVER**  
 BLONDES: 134, 18/22, 20/22, 769, S770, A791G, A812G. BROWNS: 2/4, 4/6, 8-10/20G, S12/10, 768.  
 REDS: S637, SA811G. GREYS: 132, 38, S456, 56, 56/60, 60, 600.



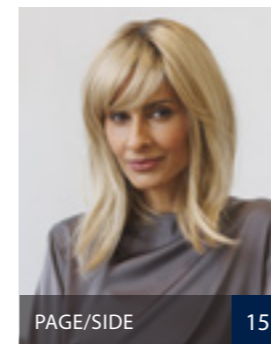
PAGE/SIDE 8

**AYA** 27125   
**SIZE/STORLEK/STØRRELSE:**  53-54 cm  
**HAIR LENGTH/HÅRLÄNGD/LÆNGDE**  
 FRONT: 6.5 cm  
 CROWN/TOP: 5 cm  
 NAPE/NACKE/NAKKE: 5 cm  
**COLOURS/FÄRGER/FARVER**  
 BLONDES: 134, 18/22, 20/22, 769, A791G.  
 BROWNS: 2/4, 4/6, 8-10/20G, S12/10, 768. REDS: S637. GREYS: 135, 38, S456, 56, 56/60, 60, 600.



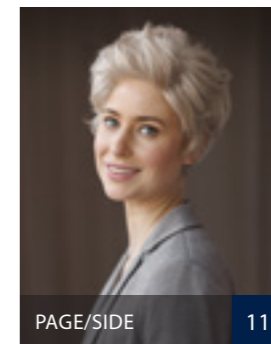
PAGE/SIDE 10

**KUY PETITE** 27137   
**SIZE/STORLEK/STØRRELSE:**  51 cm  
**HAIR LENGTH/HÅRLÄNGD/LÆNGDE**  
 FRONT: 6 cm  
 CROWN/TOP: 6 cm  
 NAPE/NACKE/NAKKE: 6 cm  
**COLOURS/FÄRGER/FARVER**  
 BLONDES: 134, 18/22, 20/22, 769. BROWNS: 2/4, 4/6, S12/10. REDS: S637. GREYS: 38, 56/60, 60, 600.



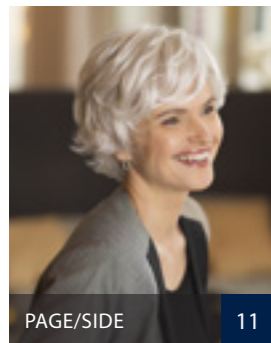
PAGE/SIDE 15

**SANGO** 27136   
**SIZE/STORLEK/STØRRELSE:**  53-54 cm  
**HAIR LENGTH/HÅRLÄNGD/LÆNGDE**  
 FRONT: 10 cm  
 CROWN/TOP: 33 cm  
 NAPE/NACKE/NAKKE: 17 cm  
**COLOURS/FÄRGER/FARVER**  
 BLONDES: 134, 20/22, 769, S770, A812G.  
 BROWNS: 2/4, 4/6, 8-10/20G, 728T, A761G.  
 REDS: 131, S637, SA811G



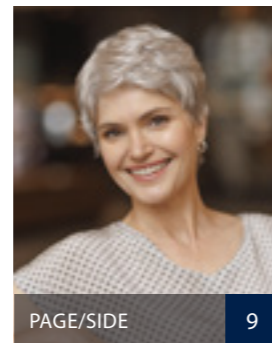
PAGE/SIDE 11

**TANI** 27124   
**SIZE/STORLEK/STØRRELSE:**  53-54 cm  
**HAIR LENGTH/HÅRLÄNGD/LÆNGDE**  
 FRONT: 9.5 cm  
 CROWN/TOP: 9.5 cm  
 NAPE/NACKE/NAKKE: 6 cm  
**COLOURS/FÄRGER/FARVER**  
 BLONDES: 134, 18/22, 769. GREYS: 135, 38, S456, 56, 60, 600.




PAGE/SIDE 11

**KASUMI** 27122   
**SIZE/STORLEK/STØRRELSE:**  53-54 cm  
**HAIR LENGTH/HÅRLÄNGD/LÆNGDE**  
 FRONT: 11.5 cm  
 CROWN/TOP: 9.5 cm  
 NAPE/NACKE/NAKKE: 6.5 cm  
**COLOURS/FÄRGER/FARVER**  
 BLONDES: 134, 18/22, 20/22, 769. BROWNS: 4/6, 8-10/20G. GREYS: 135, 38, S456, 56, 56/60, 60, 600.





PAGE/SIDE 9

**MAIKO** 27115   
**SIZE/STORLEK/STØRRELSE:**  53-54 cm  
**HAIR LENGTH/HÅRLÄNGD/LÆNGDE**  
 FRONT: 6 cm  
 CROWN/TOP: 6 cm  
 NAPE/NACKE/NAKKE: 6 cm  
**COLOURS/FÄRGER/FARVER**  
 BLONDES: 134, 18/22, 20/22, 769. BROWNS: A8. GREYS: 135, 38, 456, 56, 56/60, 60, 600.




PAGE/SIDE 14

**SORA** 27120   
**SIZE/STORLEK/STØRRELSE:**  53-54 cm  
**HAIR LENGTH/HÅRLÄNGD/LÆNGDE**  
 FRONT: 7.5 cm  
 CROWN/TOP: 19 cm  
 NAPE/NACKE/NAKKE: 7 cm  
**COLOURS/FÄRGER/FARVER**  
 BLONDES: 134, 20/22, 713, 769, S770, A791G, A812G. BROWNS: 1B, 2/4, 4/6, 8-10/20G, S12/10, A761G. REDS: S637, SA811G. GREYS: 38, 56, 56/60.



PAGE/SIDE 13

**YAMA** 27117   
**SIZE/STORLEK/STØRRELSE:**  53-54 cm  
**HAIR LENGTH/HÅRLÄNGD/LÆNGDE**  
 FRONT: 10 cm  
 CROWN/TOP: 13 cm  
 NAPE/NACKE/NAKKE: 10 cm  
**COLOURS/FÄRGER/FARVER**  
 BLONDES: 18/22, 20/22, 769, S770. BROWNS: 2/4, 4/6, 8-10/20G, S12/10, 768. REDS: S637. GREYS: 38, 56, 56/60, 60, 600

# PREMIUM

BY SENTOO

COLOUR STYLE	BLONDES							
	134	18/22	20/22	713	769	5770	A791G	A812G
AYA	•	•	•		•		•	
KASUMI	•	•	•		•			
KINU	•	•	•		•	•	•	•
KYU	•	•	•		•		•	
KYU PETITE	•	•	•		•			
MAIKO	•	•	•		•			
MYU	•				•	•	•	•
SAKURA LONG	•		•		•	•	•	•
SANGO	•		•		•	•		•
SORA	•		•	•	•	•	•	•
SORA PETITE	•		•		•		•	•
TAMAKI	•	•	•		•	•	•	•
TANI	•	•			•			
YAMA		•	•		•	•		

COLOUR STYLE	BROWNS								
	1B	2/4	4/6	8	512/10	728T	A761G	768	8/10-20G
AYA		•	•		•			•	•
KASUMI			•						•
KINU		•	•		•			•	•
KYU	•	•	•		•			•	•
KYU PETITE		•	•		•				
MAIKO				•					
MYU		•	•				•		•
SAKURA LONG		•	•			•	•		•
SANGO		•	•			•	•		•
SORA	•	•	•		•		•		•
SORA PETITE		•	•				•		•
TAMAKI		•	•		•			•	•
TANI									
YAMA		•	•		•			•	•

COLOUR STYLE	REDS		
	131	S637	SA811G
AYA		•	
KASUMI			
KINU		•	•
KYU		•	
KYU - S		•	
MAIKO			
MYU		•	
SAKURA LONG	•	•	•
SANGO	•	•	•
SORA		•	•
SORA - S			•
TAMAKI		•	•
TANI			
YAMA		•	

COLOUR STYLE	GREYS							
	132	135	38	S456	56	56/60	60	600
AYA		•	•	•	•	•	•	•
KASUMI		•	•	•	•	•	•	•
KINU	•		•	•	•	•	•	•
KYU		•	•	•	•	•	•	•
KYU - S			•			•	•	•
MAIKO		•	•	•	•	•	•	•
MYU								
SAKURA LONG								
SANGO								
SORA			•		•	•		
SORA - S			•			•		
TAMAKI	•		•	•	•	•	•	•
TANI		•	•	•	•		•	•
YAMA			•		•	•	•	•



LILY



PEONY



lacefront - mono - wefted  
lacefront - mono - tråns/trense



lacefront - hand-tied - weft on net  
lacefront - handknuten - tråns på nät  
lacefront - håndknyttet - trense på net



lacefront - mono - hand-tied - weft on net  
lacefront - mono - handknuten - tråns på nät  
lacefront - mono - håndknyttet - trense på net



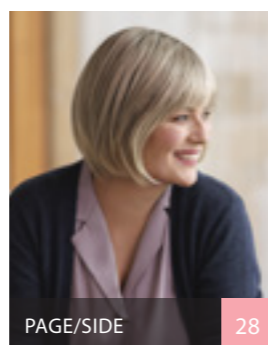
extended lacefront-mono-hand-tied - weft on net  
extended lacefront-mono-handknuten - tråns på nät  
extended lacefront-mono-håndknyttet - trense på net



anti-slip

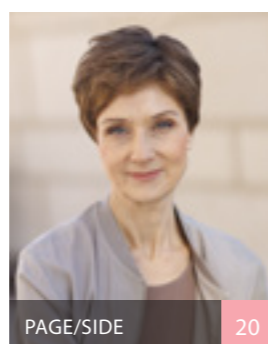


anti-slip



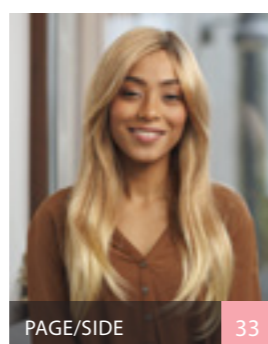
PAGE/SIDE 28

**Aster** 27011   
SIZE/STORLEK/STØRRELSE: 53 cm   
HAIR LENGTH/HÅRLÄNGD/LÆNGDE  
FRONT: 10 cm | CROWN/TOP: 26 cm  
NAPE/NACKE/NAKKE: 10 cm  
COLOURS/FÄRGER/FARVER  
MELANGE: Cherry (9/12/18) Maple (16/17/20), Sandalwood (8/11/24), Walnut (6/10/14), White Oak (18/22). ROOTED: **Light Oak Melange** (75/89/92), Red Chestnut (4/33), Sycamore Melange (6/70/23). GREYS: Driftwood (38), Iced Melange (38/42/60), Silver (62).



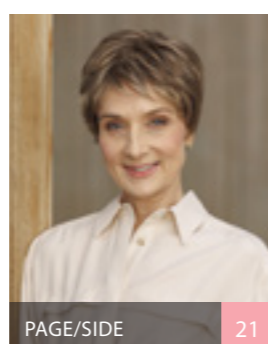
PAGE/SIDE 20

**Blossom** 27004   
SIZE/STORLEK/STØRRELSE: 55 cm   
HAIR LENGTH/HÅRLÄNGD/LÆNGDE  
FRONT: 5 cm | CROWN/TOP: 10 cm  
NAPE/NACKE/NAKKE: 5 cm  
COLOURS/FÄRGER/FARVER  
MELANGE: Aspen (134), **Cherry** (9/12/18), Midnight (4), Sandalwood (8/11/24), Walnut (6/10/14), White Oak (18/22). ROOTED: Aspen Melange (8/22), Birch (12/14), Dark Sand (81/85/87/91), Light Oak Melange (75/89/92). GREYS: Hickory (4565), Iced Melange (38/42/60), Silver (62), Smokey Melange (34/36/39).



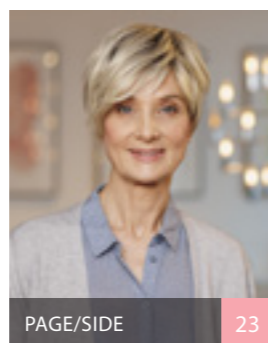
PAGE/SIDE 33

**Bluebell** 27007   
SIZE/STORLEK/STØRRELSE: 53 cm   
HAIR LENGTH/HÅRLÄNGD/LÆNGDE  
FRONT: 38 cm | CROWN/TOP: 48 cm  
NAPE/NACKE/NAKKE: 33 cm  
COLOURS/FÄRGER/FARVER  
MELANGE: Cherry (9/12/18), Maple (16/17/20), Midnight (4), Walnut (6/10/14), White Oak (18/22). ROOTED: Aspen Melange (8/22), Birch (12/14), Cherry (70/78), Light Oak Melange (75/89/92), Red Chestnut (4/33), **Sycamore Melange** (6/70/23), ZebraWood (2/60V). GREYS: Driftwood (38), Iced Melange (38/42/60), Silver (62).



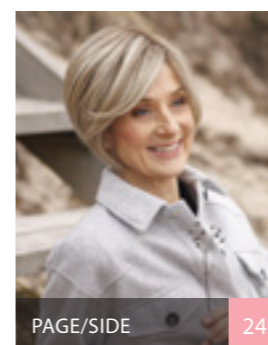
PAGE/SIDE 21

**Dahlia** 27005   
SIZE/STORLEK/STØRRELSE: 54 cm   
HAIR LENGTH/HÅRLÄNGD/LÆNGDE  
FRONT: 8 cm | CROWN/TOP: 10 cm  
NAPE/NACKE/NAKKE: 5 cm  
COLOURS/FÄRGER/FARVER  
MELANGE: Cherry (9/12/18), Maple (16/17/20), Midnight (4), **Sandalwood** (8/11/24), Walnut (6/10/14), White Oak (18/22). ROOTED: Aspen Melange (8/22), Birch(12/14), Cherry (70/78), Dark Sand (81/85/87/91), Light Oak Melange (75/89/92), Red Chestnut (4/33), Sandalwood (72/73/79), ZebraWood (2/60V). GREYS: Iced Melange (38/42/60), Silver (62), Smokey Melange (34/36/39).



PAGE/SIDE 23

**Daisy** 27012   
SIZE/STORLEK/STØRRELSE: 54 cm   
HAIR LENGTH/HÅRLÄNGD/LÆNGDE  
FRONT: 6.5 cm | CROWN/TOP: 6 cm  
NAPE/NACKE/NAKKE: 3 cm  
COLOURS/FÄRGER/FARVER  
MELANGE: Maple (16/17/20), Midnight (4), Sandalwood (8/11/24), Walnut (6/10/14). ROOTED: **Aspen Melange** (8/22), Birch (12/14), Cherry (70/78), Light Oak Melange (75/89/92), Red Chestnut (4/33), Tobacco (71/74/76), ZebraWood (2/60V). GREYS: Iced Melange (38/42/60), Smokey Melange (34/36/39).



PAGE/SIDE 24

**Gardenia** 27015   
SIZE/STORLEK/STØRRELSE: 54 cm   
HAIR LENGTH/HÅRLÄNGD/LÆNGDE  
FRONT: 14 cm | CROWN/TOP: 16 cm  
NAPE/NACKE/NAKKE: 3 cm  
COLOURS/FÄRGER/FARVER  
MELANGE: Cherry (9/12/18), Maple (16/17/20), Midnight (4), Sandalwood (8/11/24), Walnut (6/10/14), White Oak (18/22). ROOTED: **Aspen Melange** (8/22), Birch (12/14), Cherry (70/78), Dark Sand (81/85/87/91), Light Oak Melange (75/89/92), Purple Heart (4/74), Red Chestnut (4/33), Sandalwood (72/73/79). GREYS: Iced Melange (38/42/60), Silver (62), Smokey Melange (34/36/39), Sugar Berry (60/600MP).



PAGE/SIDE 30

**Hazel** 27006   
SIZE/STORLEK/STØRRELSE: 53 cm   
HAIR LENGTH/HÅRLÄNGD/LÆNGDE  
FRONT: 13 cm | CROWN/TOP: 25 cm  
NAPE/NACKE/NAKKE: 15 cm  
COLOURS/FÄRGER/FARVER  
MELANGE: Cherry (9/12/18), Maple (16/17/20), **Midnight** (4), Sandalwood (8/11/24), Walnut (6/10/14), White Oak (18/22). ROOTED: Aspen Melange (8/22), Birch (12/14), Cherry (70/78), Dark Sand (81/85/87/91), Light Oak Melange (75/89/92), Sandalwood (72/73/79), Sycamore Melange (6/70/23). GREYS: Iced Melange (38/42/60), Smokey Melange (34/36/39).



PAGE/SIDE 32

**Honesty** 27017   
SIZE/STORLEK/STØRRELSE: 56 cm   
HAIR LENGTH/HÅRLÄNGD/LÆNGDE  
FRONT: 32 cm | CROWN/TOP: 44 cm  
NAPE/NACKE/NAKKE: 40 cm  
COLOURS/FÄRGER/FARVER  
MELANGE: Maple (16/17/20), Midnight (4), **Walnut** (6/10/14), White Oak (18/22). ROOTED: Aspen Melange (8/22), Birch (12/14), Cherry (70/78), Light Oak Melange (75/89/92), Purple Heart (4/74), Red Chestnut (4/33), Sandalwood (72/73/79), Sycamore Melange (6/70/23). GREYS: Iced Melange (38/42/60), Silver (62), Sugar Berry (60/600MP).



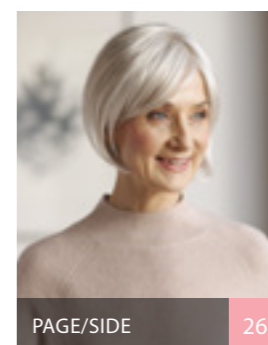
PAGE/SIDE 27

**Iris** 27010   
SIZE/STORLEK/STØRRELSE: 53 cm   
HAIR LENGTH/HÅRLÄNGD/LÆNGDE  
FRONT: 20 cm | CROWN/TOP: 22 cm  
NAPE/NACKE/NAKKE: 6.5 cm  
COLOURS/FÄRGER/FARVER  
MELANGE: Aspen (134), Ember (2/32), Maple (16/17/20), Midnight (4), **Walnut** (6/10/14). ROOTED: Light Oak Melange (75/89/92), Tobacco (71/74/76), ZebraWood (2/60V). GREYS: Iced Melange (38/42/60), Sugar Berry (60/600MP).



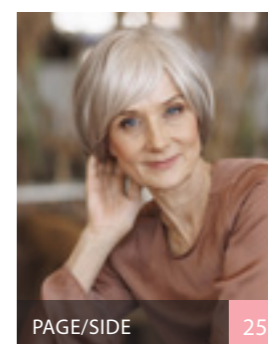
PAGE/SIDE 29

**Fuchsia** 27016   
SIZE/STORLEK/STØRRELSE: 56 cm   
HAIR LENGTH/HÅRLÄNGD/LÆNGDE  
FRONT: 30 cm | CROWN/TOP: 24 cm  
NAPE/NACKE/NAKKE: 9 cm  
COLOURS/FÄRGER/FARVER  
MELANGE: Maple (16/17/20), Midnight (4), Walnut (6/10/14), White Oak (18/22). ROOTED: Aspen Melange (8/22), **Birch** (12/14), Cherry (70/78), Light Oak Melange (75/89/92), Purple Heart (4/74), Red Chestnut (4/33), Sandalwood (72/73/79), Sycamore Melange (6/70/23). GREYS: Iced Melange (38/42/60), Silver (62), Sugar Berry (60/600MP).



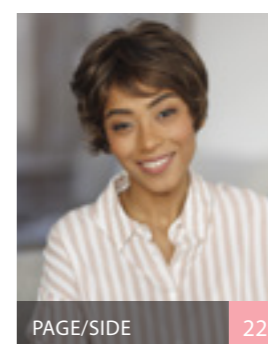
PAGE/SIDE 26

**Jasmine** 27002   
SIZE/STORLEK/STØRRELSE: 51.5 cm   
HAIR LENGTH/HÅRLÄNGD/LÆNGDE  
FRONT: 13 cm | CROWN/TOP: 22 cm  
NAPE/NACKE/NAKKE: 6 cm  
COLOURS/FÄRGER/FARVER  
MELANGE: Cherry (9/12/18), Maple (16/17/20), Midnight (4), Sandalwood (8/11/24), Walnut (6/10/14), White Oak (18/22). ROOTED: Aspen Melange (8/22), Birch(12/14), Cherry (70/78), Dark Sand (81/85/87/91), Light Oak Melange (75/89/92), Red Chestnut (4/33), Sandalwood (72/73/79). GREYS: Iced Melange (38/42/60), **Silver** (62), Smokey Melange (34/36/39), Sugar Berry (60/600MP).



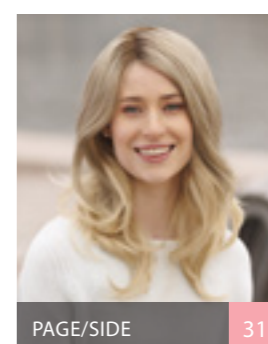
PAGE/SIDE 25

**Lily** 27001   
SIZE/STORLEK/STØRRELSE: 53 cm   
HAIR LENGTH/HÅRLÄNGD/LÆNGDE  
FRONT: 13 cm | CROWN/TOP: 17 cm  
NAPE/NACKE/NAKKE: 10 cm  
COLOURS/FÄRGER/FARVER  
MELANGE: Cherry (9/12/18), Ember (2/32), Maple (16/17/20), Midnight (4), Sandalwood (8/11/24), Walnut (6/10/14), White Oak (18/22). ROOTED: Cherry (70/78), Dark Sand (81/85/87/91), Light Oak Melange (75/89/92), Sandalwood (72/73/79). GREYS: **Iced Melange** (38/42/60), Smokey Melange (34/36/39).



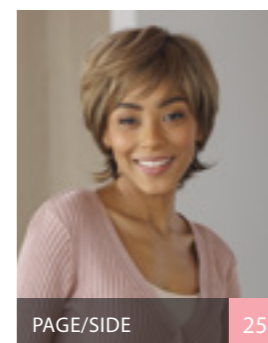
PAGE/SIDE 22

**Peony** 27003   
SIZE/STORLEK/STØRRELSE: 53 cm   
HAIR LENGTH/HÅRLÄNGD/LÆNGDE  
FRONT: 11 cm | CROWN/TOP: 7 cm  
NAPE/NACKE/NAKKE: 5 cm  
COLOURS/FÄRGER/FARVER  
MELANGE: Aspen (134), Cherry (9/12/18), Sandalwood (8/11/24), **Walnut** (6/10/14), White Oak (18/22). ROOTED: Dark Sand (81/85/87/91), Light Oak Melange (75/89/92), Cherry (70/78), Tobacco (71/74/76). GREYS: Iced Melange (38/42/60), Smokey Melange (34/36/39).



PAGE/SIDE 31

**Poppy** 27008   
SIZE/STORLEK/STØRRELSE: 53 cm   
HAIR LENGTH/HÅRLÄNGD/LÆNGDE  
FRONT: 32 cm | CROWN/TOP: 36 cm  
NAPE/NACKE/NAKKE: 36 cm  
COLOURS/FÄRGER/FARVER  
MELANGE: Maple (16/17/20), Midnight (4), Walnut (6/10/14), White Oak (18/22). ROOTED: Cherry (70/78), **Light Oak Melange** (75/89/92), Red Chestnut (4/33), Sandalwood (72/73/79), Sycamore Melange (6/70/23). GREYS: Iced Melange (38/42/60), Silver (62), Sugar Berry (60/600MP).



PAGE/SIDE 25

**Tulip** 27009   
SIZE/STORLEK/STØRRELSE: 53 cm   
HAIR LENGTH/HÅRLÄNGD/LÆNGDE  
FRONT: 9 cm | CROWN/TOP: 12.5 cm  
NAPE/NACKE/NAKKE: 8 cm  
COLOURS/FÄRGER/FARVER  
MELANGE: Maple (16/17/20), Midnight (4), Sandalwood (8/11/24), Walnut (6/10/14). ROOTED: Light Oak Melange (75/89/92), Red Chestnut (4/33), **Tobacco** (71/74/76), ZebraWood (2/60V). GREYS: Iced Melange (38/42/60), Smokey Melange (34/36/39).



COLOUR STYLE	MELANGE										ROOTED									
	Aspen – 134	Ember – 2/32	Cherry Melange – 9/12/18	Maple Melange – 16/17/20	Midnight – 4	Walnut Melange – 6/10/14	White Oak – 18/22	Sandalwood Melange – 8/11/24	Aspen Melange Rooted – 8/22	Birch Rooted – 12/14	Cherry Rooted – 70/78	Dark Sand Rooted – 81/85/87/91	Light Oak Melange Rooted – 75/89/92	Purple Heart Rooted – 4/74	Red Chestnut Rooted – 4/33	Sycamore Melange Rooted – 6/70/23	Sandalwood Rooted – 72/73/79	Tobacco Rooted – 71/74/76	ZebraWood Rooted – 2/60V	
ASTER			•	•		•	•	•				•		•	•					
BLOSSOM	•		•		•	•	•	•	•		•	•								
BLUEBELL			•	•	•	•	•		•	•		•		•	•				•	
DAHLIA			•	•	•	•	•	•	•	•	•	•		•	•		•		•	
DAISY				•	•	•	•	•	•	•		•		•	•		•	•		
FUCHSIA				•	•	•	•	•	•	•		•	•	•	•	•			•	
GARDENIA			•	•	•	•	•	•	•	•	•	•	•	•	•	•		•	•	
HAZEL			•	•	•	•	•	•	•	•	•	•			•	•				
HONESTY				•	•	•	•	•	•	•		•	•	•	•	•			•	
IRIS	•	•		•	•	•						•					•	•		
JASMINE			•	•	•	•	•	•	•	•	•	•		•			•		•	
LILY		•	•	•	•	•	•	•		•	•	•				•				
PEONY	•		•			•	•	•		•	•	•					•			
POPPY				•	•	•	•			•		•		•	•	•			•	
TULIP				•	•	•	•					•		•			•	•		

COLOUR STYLE	GREYS					
	Silver – 62	Iced Melange – 38/42/60	Smokey Melange – 34/36/39	Dirftwood – 38	Hickory – 456S	Sugar Berry – 60/600MP
ASTER	•	•		•		
BLOSSOM	•	•	•		•	
BLUEBELL	•	•		•		
DAHLIA	•	•	•			
DAISY		•	•			
FUCHSIA	•	•				•
GARDENIA	•	•	•			•
HAZEL		•	•			
HONESTY	•	•				•
IRIS		•				•
JASMINE	•	•	•			•
LILY		•	•			
PEONY		•	•			
POPPY	•	•				•
TULIP		•	•			



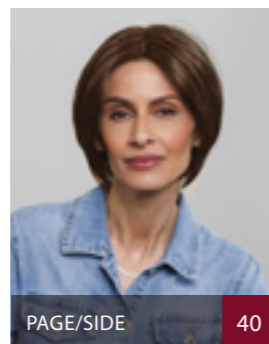
LOTUS | HAZEL

# CREATIVE

BY SENTOO

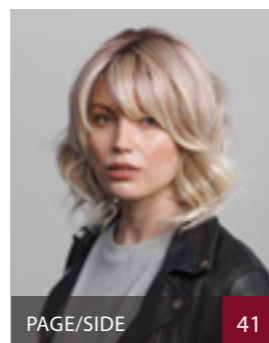


soft mono (lacefront) - double mono - weft on net - anti slip  
 soft mono (lacefront) - dubbel mono - tråns på nät - anti slip  
 soft mono (lacefront) - dobbelt mono - trense på net - anti slip



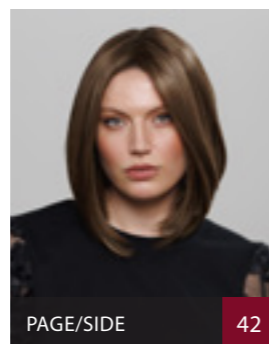
PAGE/SIDE 40

**EMILIA** 27026  
 100% HIGH HEAT FIBRE   
 SIZE/STORLEK/STØRRELSE: 53.5 cm  
 HAIR LENGTH/HÅRLÆNGD/LÆNGDE  
 FRONT: 14 cm  
 CROWN/TOP: 19 cm  
 NAPE/NACKE/NAKKE: 4.5 cm  
 COLOURS/FÄRGER/FARVER  
 BLONDES: Light Ash Blonde, Dark Ash Blonde, Medium Gold Blonde. BROWNS: Dark Maple Blonde, Medium Brown. GREY: Stone Grey.



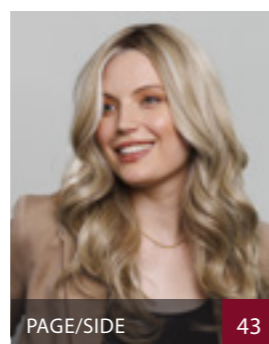
PAGE/SIDE 41

**VALENTINE** 27024  
 100% HIGH HEAT FIBRE   
 SIZE/STORLEK/STØRRELSE: 53.5 cm  
 HAIR LENGTH/HÅRLÆNGD/LÆNGDE  
 FRONT: 11 cm  
 CROWN/TOP: 28 cm  
 NAPE/NACKE/NAKKE: 15 cm  
 COLOURS/FÄRGER/FARVER  
 BLONDES: Light Ash Blonde, Dark Ash Blonde, Medium Gold Blonde. BROWNS: Dark Maple Blonde, Medium Brown.



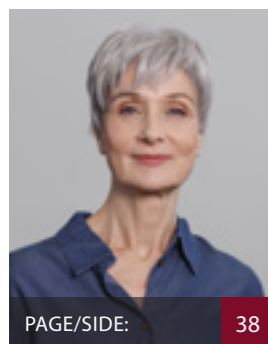
PAGE/SIDE 42

**OPHELIA** 27025  
 100% HIGH HEAT FIBRE   
 SIZE/STORLEK/STØRRELSE: 53.5 cm  
 HAIR LENGTH/HÅRLÆNGD/LÆNGDE  
 FRONT: 30.5 cm  
 CROWN/TOP: 30.5 cm  
 NAPE/NACKE/NAKKE: 9 cm  
 COLOURS/FÄRGER/FARVER  
 BLONDES: Light Ash Blonde, Dark Ash Blonde, Medium Gold Blonde. BROWNS: Dark Maple Blonde, Medium Brown. GREY: Stone Grey.



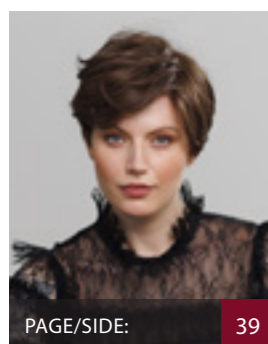
PAGE/SIDE 43

**ISABEL** 27023  
 100% HIGH HEAT FIBRE   
 SIZE/STORLEK/STØRRELSE: 53.5 cm  
 HAIR LENGTH/HÅRLÆNGD/LÆNGDE  
 FRONT: 32 cm  
 CROWN/TOP: 46 cm  
 NAPE/NACKE/NAKKE: 46 cm  
 COLOURS/FÄRGER/FARVER  
 BLONDES: Light Ash Blonde, Dark Ash Blonde, Medium Gold Blonde. BROWNS: Dark Maple Blonde, Medium Brown.



PAGE/SIDE: 38

**MARGERY** 27022  
 100% HIGH HEAT FIBRE   
 SIZE/STORLEK/STØRRELSE: 53.5 cm  
 HAIR LENGTH/HÅRLÆNGD/LÆNGDE  
 FRONT: 9 cm  
 CROWN/TOP: 10 cm  
 NAPE/NACKE/NAKKE: 5.5 cm  
 COLOURS/FÄRGER/FARVER  
 BLONDES: Light Ash Blonde, Dark Ash Blonde, Medium Gold Blonde. BROWNS: Dark Maple Blonde, Medium Brown. GREY: Stone Grey.



PAGE/SIDE: 39

**ROSALINE** 27027  
 100% HIGH HEAT FIBRE   
 SIZE/STORLEK/STØRRELSE: 53.5 cm  
 HAIR LENGTH/HÅRLÆNGD/LÆNGDE  
 FRONT: 15.5 cm  
 CROWN/TOP: 10 cm  
 NAPE/NACKE/NAKKE: 5 cm  
 COLOURS/FÄRGER/FARVER  
 BLONDES: Light Ash Blonde, Dark Ash Blonde, Medium Gold Blonde. BROWNS: Dark Maple Blonde, Medium Brown. GREY: Stone Grey.

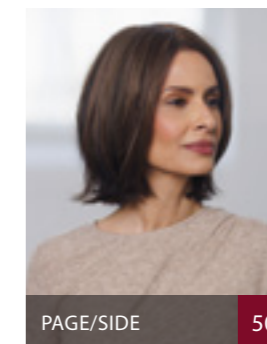
Styling:  
 max 140°

## Creative High Heat Fibre – Hair Care

To ensure you enjoy your Sentoo Creative high heat fibre product for as long as possible – it is important that you only use the care products from the X-range. These products contain special ingredients that balance the moisture content of the fibre, helping to maintain a healthy appearance and increase the lifespan of the Sentoo high heat product.

För att du ska kunna njuta av din Sentoo Creative av högvärmetåligt fiber så länge som möjligt – är det viktigt att du endast använder skötselprodukter från X-serien. Dessa produkter innehåller ingredienser som balanserar fibrernas fuktighet, vilket bidrar till att fibret fortsätter att se friskt och fräscht ut och förlänger livslängden.

Det er viktig at du bare/kun bruker hårpleieprodukter fra X-serien, da de er spesielt utviklet for/til denne fiberen. Disse produktene inneholder spesielle ingredienser som/der balanserer fibrenes fuktighet, noe som bidrar/ hvilket bidrager til at fiberen fortsetter å/ bliver ved med at se frisk og sunn/sund ut og forlenger levetiden.



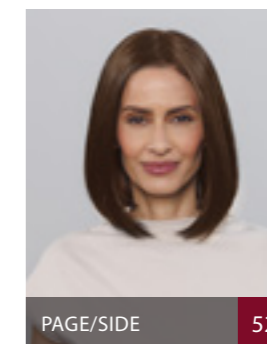
PAGE/SIDE 50

**ALICE** 32152  
 TOP PIECE  
 100% HIGH HEAT FIBRE  
 SIZE/STORLEK/STØRRELSE: 18 x 8 cm  
 CONSTRUCTION/KONSTRUKTION /KONSTRUKSJON: soft mono (lacefront), pu-kant, 5 hairloc.  
 COLOURS/FÄRGER/FARVER  
 BLONDES: Light Ash Blonde, Dark Ash Blonde, Medium Gold Blonde. BROWNS: Dark Maple Blonde, Medium Brown. GREY: Stone Grey.



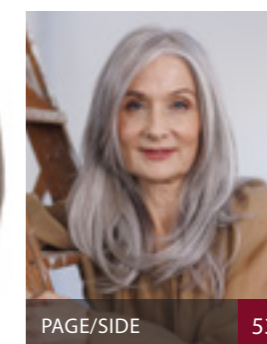
PAGE/SIDE 51

**ALEXAS** 32150  
 TOP PIECE  
 100% HIGH HEAT FIBRE  
 SIZE/STORLEK/STØRRELSE: 11.5 x 15 cm  
 CONSTRUCTION/KONSTRUKTION /KONSTRUKSJON: nät/net, dubbel/dobbelt mono, 4 hairloc.  
 COLOURS/FÄRGER/FARVER  
 BLONDES: Light Ash Blonde, Dark Ash Blonde, Medium Gold Blonde. BROWNS: Dark Maple Blonde, Medium Brown. GREY: Stone Grey.



PAGE/SIDE 52

**DION** 32151  
 TOP PIECE  
 100% HIGH HEAT FIBRE  
 SIZE/STORLEK/STØRRELSE: 8 x 13.5 cm  
 CONSTRUCTION/KONSTRUKTION /KONSTRUKSJON: nät/net top, pu-kant, 4 hairloc.  
 COLOURS/FÄRGER/FARVER  
 BLONDES: Light Ash Blonde, Dark Ash Blonde, Medium Gold Blonde. BROWNS: Dark Maple Blonde, Medium Brown. GREY: Stone Grey.



PAGE/SIDE 53

**ALBANY** 32153  
 TOP PIECE  
 100% HIGH HEAT FIBRE  
 SIZE/STORLEK/STØRRELSE: 23 x 22.5 cm  
 CONSTRUCTION/KONSTRUKTION /KONSTRUKSJON: soft mono (lacefront), dubbel/dobbelt mono top, tråns/trense på nät/net, 5 hairloc, anti slip.  
 COLOURS/FÄRGER/FARVER  
 BLONDES: Light Ash Blonde, Dark Ash Blonde, Medium Gold Blonde. BROWNS: Dark Maple Blonde, Medium Brown. GREY: Stone Grey.

# CREATIVE

BY SENTOO



double mono top - wefted  
dubbel mono top - tråns/trense



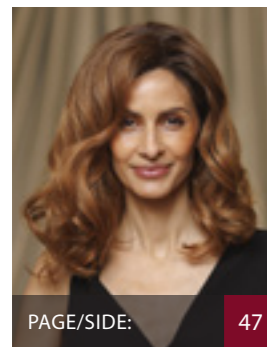
lacefront - mono top\* - hand-tied  
lacefront - mono top\* - handknuten  
lacefront - mono top\* - håndknyttet



\* DIAMOND AND AMBER: DOUBLE MONO TOP



lacefront - mono - hand-tied - anti slip  
lacefront - mono - handknuten - anti slip  
lacefront - mono - håndknyttet - anti slip



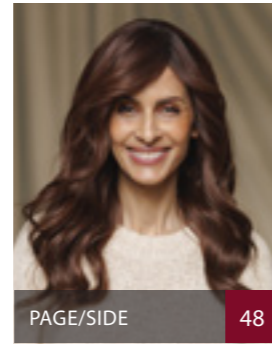
**AMBER** 15413   
100% HUMAN HAIR   
SIZE/STORLEK/STØRRELSE: 52-53 cm  
HAIR LENGTH/HÅRLÆNGD/LÆNGDE  
FRONT: 30 cm  
CROWN/TOP: 30 cm  
NAPE/NACKE/NAKKE: 35 cm  
COLOURS/FÄRGER/FARVER  
BLONDES: Dark Ash Blond, Gold Blond Mix,  
Mid Blond Mix, Starlight Blond. BROWNS:  
Brown Spice, Dark Chocolate.

PAGE/SIDE: 47



**DIAMOND** 15414   
100% HUMAN HAIR   
SIZE/STORLEK/STØRRELSE: 52-53 cm  
HAIR LENGTH/HÅRLÆNGD/LÆNGDE  
FRONT: 35 cm  
CROWN/TOP: 45 cm  
NAPE/NACKE/NAKKE: 35 cm  
COLOURS/FÄRGER/FARVER  
BLONDES: Dark Ash Blond, Gold Blond Mix,  
Mid Blond Mix, Starlight Blond. BROWNS: Brown  
Spice, Dark Chocolate, Espresso.

PAGE/SIDE: 49



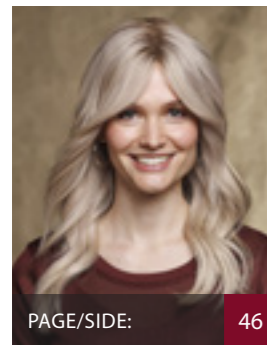
**JADE** 16500   
100% HUMAN HAIR   
SIZE/STORLEK/STØRRELSE: 52-53 cm  
HAIR LENGTH/HÅRLÆNGD/LÆNGDE  
FRONT: 35 cm  
CROWN/TOP: 35 cm  
NAPE/NACKE/NAKKE: 40 cm  
COLOURS/FÄRGER/FARVER  
BLONDES: 20, 24. BROWNS: 4, 14. RED: 34.  
GREY: 42.

PAGE/SIDE: 48



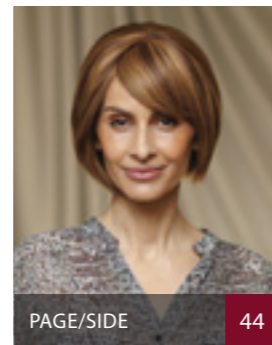
**LORETTA** 15411   
100% HUMAN HAIR   
SIZE/STORLEK/STØRRELSE: 54 cm  
HAIR LENGTH/HÅRLÆNGD/LÆNGDE  
FRONT: 12-15 cm  
CROWN/TOP: 20-25 cm  
NAPE/NACKE/NAKKE: 24 cm  
COLOURS/FÄRGER/FARVER  
BLONDES: Dark Ash Blond, Gold Blond Mix,  
Starlight Blond. BROWNS: Brown Spice,  
Dark Chocolate, Honey Brown.

PAGE/SIDE: 45



**DALIDA** 15412   
100% HUMAN HAIR   
SIZE/STORLEK/STØRRELSE: 54-55 cm  
HAIR LENGTH/HÅRLÆNGD/LÆNGDE  
FRONT: 18 cm  
CROWN/TOP: 32 cm  
NAPE/NACKE/NAKKE: 34 cm  
COLOURS/FÄRGER/FARVER  
BLONDES: Dark Ash Blond, Gold Blond Mix,  
Starlight Blond. BROWNS: Brown Spice,  
Dark Chocolate, Honey Brown.

PAGE/SIDE: 46



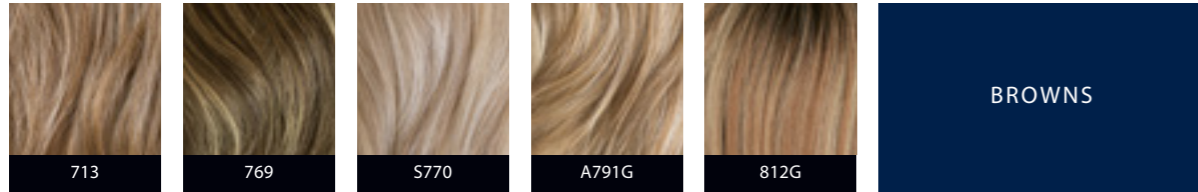
**LUCA** 15410   
100% HUMAN HAIR   
SIZE/STORLEK/STØRRELSE: 54 cm  
HAIR LENGTH/HÅRLÆNGD/LÆNGDE  
FRONT: 12 cm  
CROWN/TOP: 15 cm  
NAPE/NACKE/NAKKE: 6 cm  
COLOURS/FÄRGER/FARVER  
BLONDES: Dark Ash Blond, Gold Blond Mix,  
Starlight Blond. BROWNS: Brown Spice,  
Dark Chocolate, Honey Brown.

PAGE/SIDE: 44



**PREMIUM**  
BY SENTOO

BLONDES



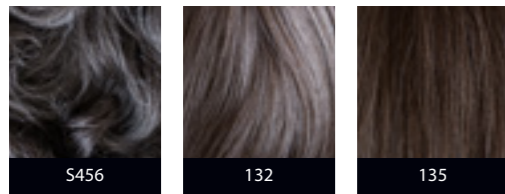
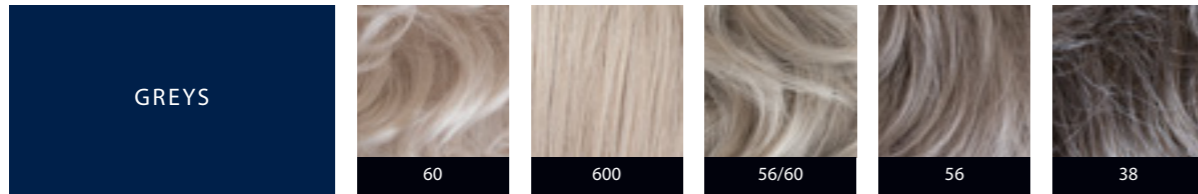
BROWNS



REDS

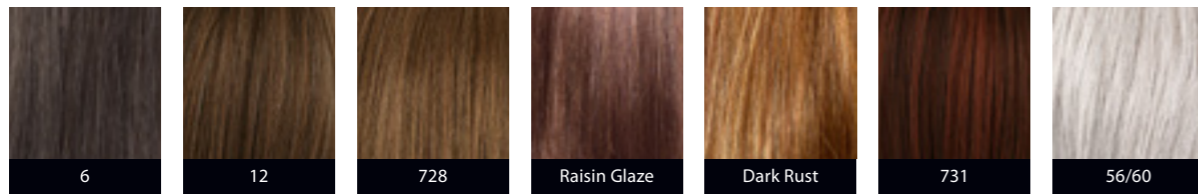
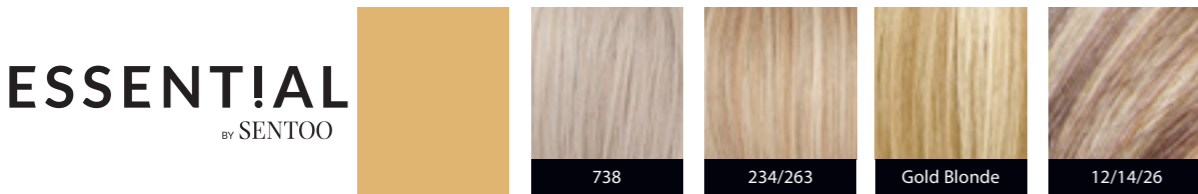


GREYS



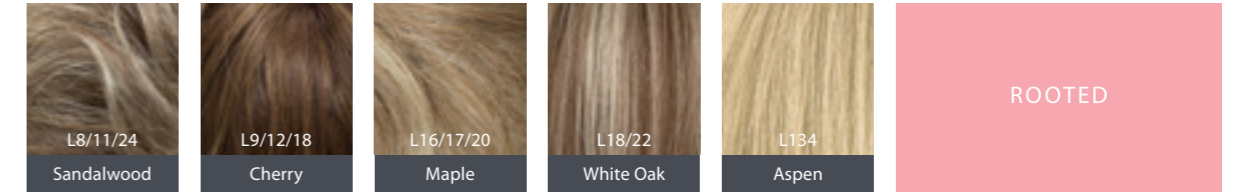
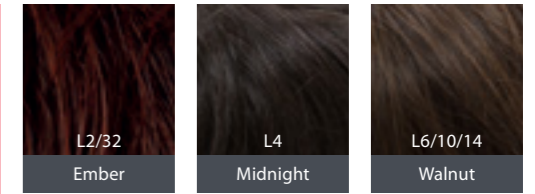
FOR A TRUE REPRESENTATION OF COLOUR, WE RECOMMEND USING A COLLECTION COLOUR RING. FÖR RÄTT FÄRGANGIVELSE OCH NYANS, ANVÄND KOLLEKTIONENS FÄRGRING. FOR Å FÅ EN VIRKELIGHETSTRO FARGEJENGIVELSE/ NUANCE ANBEFALER VI Å AT BRUKE/BRUGE KOLLEKTIONERNE FÄRGRING/FARVERING.

**ESSENTIAL**  
BY SENTOO

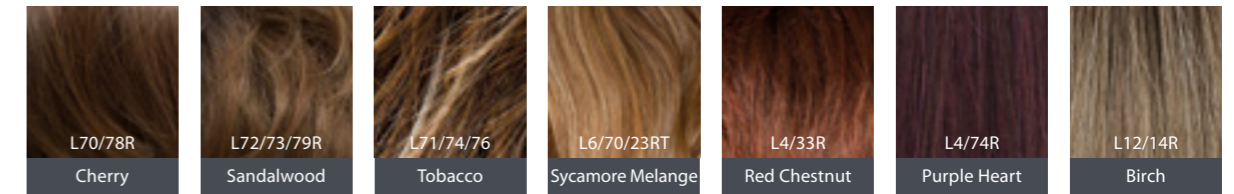


**LOTUS**  
BY SENTOO

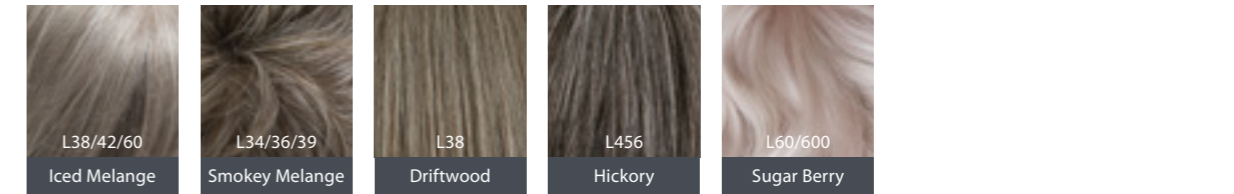
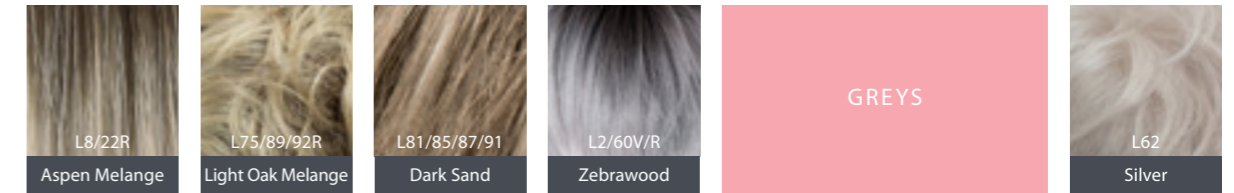
MELANGE



ROOTED

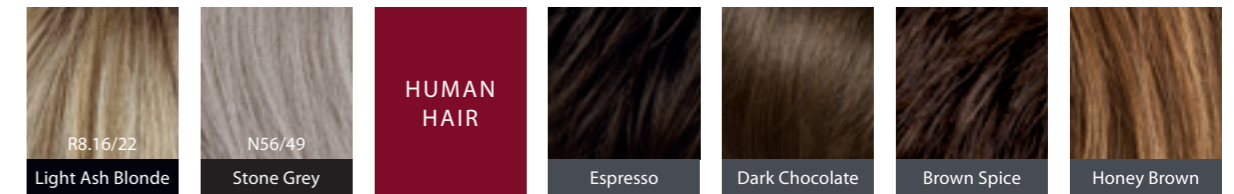
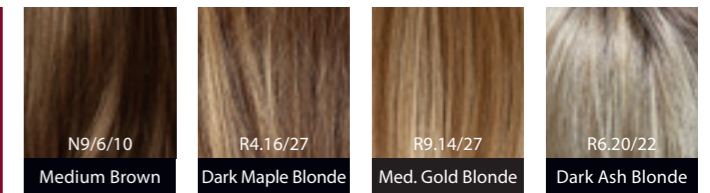


GREYS

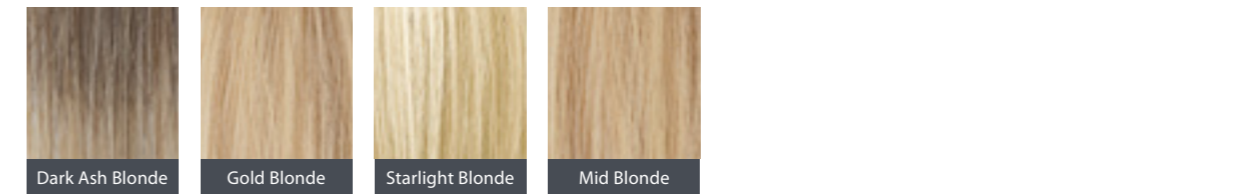


**CREATIVE**  
BY SENTOO

HIGH HEAT FIBRE



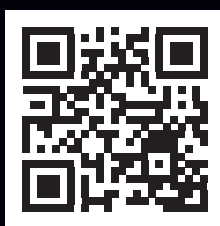
HUMAN HAIR





# Aderans

SCANDINAVIA



ADERANS.SE

**ADERANS | SWEDEN**

TOUPÉMA BELGAL  
020-36 87 00  
toupemabelgal.se

**ADERANS | DENMARK**

CARL M LUNDH  
78 77 05 46  
carlmundh.dk

**ADERANS | NORWAY**

CARL M LUNDH  
219 39 620  
carlmundh.no