



# HOUSE *of* CHRISTINE

HEADWEAR





## 20 years of caring for you...

Welcome to this special autumn edition of our 20-years anniversary catalogue.

We are so very proud to have you browsing through our inspirational headwear universe filled with autumn headwear designs and moments from aesthetic surroundings.

Having now spent months marking our 20-years anniversary with special guest stars, throwbacks to the early days and lots of valued dialog with all our friends of Christine, we are excited to take on a new season of wonderful autumn headwear arrivals and even more anniversary surprises.

The classic and lovable Christine collection is a fashionable and aesthetic autumn series of soft and comfortable models, in warm colours with sparkling details. Set in an old 18th century Manor House the many classy models are presented in a beautiful and almost majestic scenery worthy of our many dear Christine-queens.

Finding your Boho spirit won't be difficult this autumn season. The colourful bohemian models are wrapped up in a flamboyant and fabulous universe where more is definitely more. Go all in with your favourite colour on a familiar model or try one of the beautiful new designs.

Viva 'la viva!' This new collection and the calm, yet absolutely cool, Viva-vibe really makes us smile, wanting now to go all basic with dusty colours and on-trend Grab & Go designs.

Whatever reason you have for looking through this catalogue, filled with high-quality and beautiful headwear designs, you can be sure every single one is made because we care. Care about your wellbeing, your newfound need for hair coverings and for giving you the best experience in a universe where you are not alone, and where only the best is good enough.

We welcome you to this special 20-years anniversary edition and hope to inspire you to find something you will enjoy wearing, not just because you have to, but because it makes you feel feminine, comfortable and beautiful.



Front page: 3040-0892 Amber - Boho Turban Set - Printed, 1008-0882 Lotus Turban - Printed, 1554-0899 Lilly - V Turban 1 - 3044-0903 Ruby Skye - Boho Hat - Velvet

Style details page 59, 61, 63, 64



# Christine<sup>®</sup>

HEADWEAR

With beautiful and unique designs Christine Headwear offers you a wide range of feminine, contemporary and versatile head coverings. An aesthetic collection made to give you the possibility of dressing up your life and lifestyle when experiencing hair loss.

The natural fabrics used to form and complete the high quality Danish designed collections are carefully selected to provide you with comfortable, fashionable and functional headwear. Leaving you covered and confident with a beautiful feminine framed silhouette.

A wearable yet sophisticated brand with excellent fitting and exquisite style created with love for the beautiful you.

#forthebeautifulyou

1419-0883 Beatrice Turban w. Ribbons

Style details page 58

1



# Bamboo Collection

CHRISTINE HEADWEAR

The bamboo-viscose products from Christine Headwear are made in the unique and functional Caretech® Bamboo quality.

Bamboo-viscose fabric has many fantastic features and the soft and comfortable quality is actually used to form the largest part of the Christine Headwear product range.

The Caretech® Bamboo is supremely soft, silky and luxurious to the touch.

It is breathable and thermo-regulating so you remain comfortable and dry during both summer and winter temperatures. The fabric is more moisture absorbent than cotton and quickly removes the moisture from the skin and releases it.

Further the eco-friendly Caretech® Bamboo products are extremely gentle to wear and highly suitable to use against sensitive skin.



2



4



3

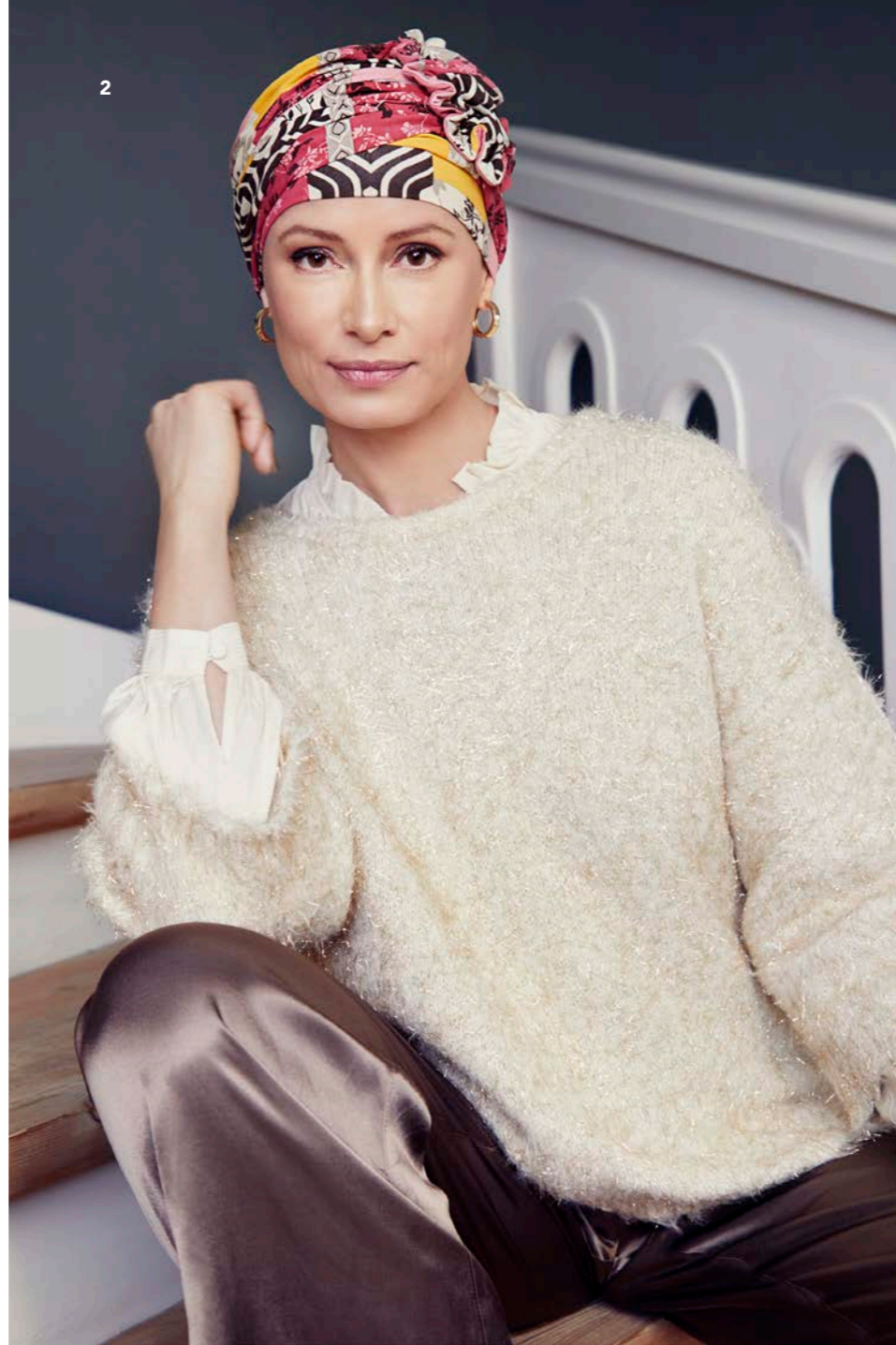
1 - 1418-0883 Shakti Turban - Printed / 2 - 1520-0901 Shakti Turban w. Printed Headband  
3 - 2000-0883 Yoga Turban - Printed / 4 - 1008-0883 Lotus Turban - Printed



2000-0881  
Yoga Turban - Printed



1 - 1419-0881 Beatrice Turban w. Ribbons / 2 - 1331-0881 Shanti Turban w. Print  
3 - 1008-0881 Lotus Turban - Printed / 4 - 1418-0881 Shakti Turban - Printed



1 - 1331-0884 Shanti Turban w. Print / 2 - 1008-0884 Lotus Turban - Printed  
3 - 1419-0884 Beatrice Turban w. Ribbons



1 - 2000-0882 Yoga Turban - Printed / 2 - 1418-0882 Shakti Turban - Printed  
3 - 1008-0882 Lotus Turban - Printed





1 - 1461-0653 Shanti Turban - Mixed Colours / 2 - 1529-0795 Amia Turban - Printed





## Winter Wear

CHRISTINE HEADWEAR

Complete your autumn/winter look with a soft and uniquely designed knitted hat.

The luxurious hats from Christine Headwear are specially constructed to suit a bare head and will add warmth and comfortable protection against the cold winds and freezing temperatures.

With the special anniversary winter series, you can dress yourself in the softest and finest cashmere blend as we've made a matching knitted hat and poncho for you. The Christine poncho can be used as both a scarf and a poncho. The stylish anniversary model is just as snug and comfortable to wear as an extra layer inside, as outside over your favourite winter jacket.

1533-0827 Aurelia Hat

Style details page 59



NEW  
MODELS  
cashmere  
blend



*Exclusive  
Anniversary  
Editions*

1 - 1547-0907 Hazel Knitted Hat / 2 - 1548-0906 Christine Poncho  
3 - 1548-0907 Christine Poncho / 4 - 1547-0906 Hazel Knitted Hat



## Supima Cotton

CHRISTINE HEADWEAR

The Caretech® Supima Cotton is a luxurious cotton quality from Christine Headwear.

Supima is regarded as one of the finest cotton qualities available and is both more durable than regular cotton and much softer to the touch.

With a Supima product you will get a long-lasting premium product with strong pilling resistance, a beautiful colour retention and high-class comfort.



CARETECH®  
SUPIMA COTTON

1 - 1490-0774 Nomi Turban / 2 - 1484-0657 Zuri Turban  
3 - 1521-0656 Sena Turban / 4 - 1438-0655 Mila Turban

# Body Balance Line

CHRISTINE HEADWEAR



## 37.5® TECHNOLOGY



37.5® active particles ensure ultimate comfort and wellbeing



37.5® technology helps warm you up when you're cold and cool you down when you're hot



37.5® technology helps you maintain a comfortable personal microclimate relative humidity of 37.5%

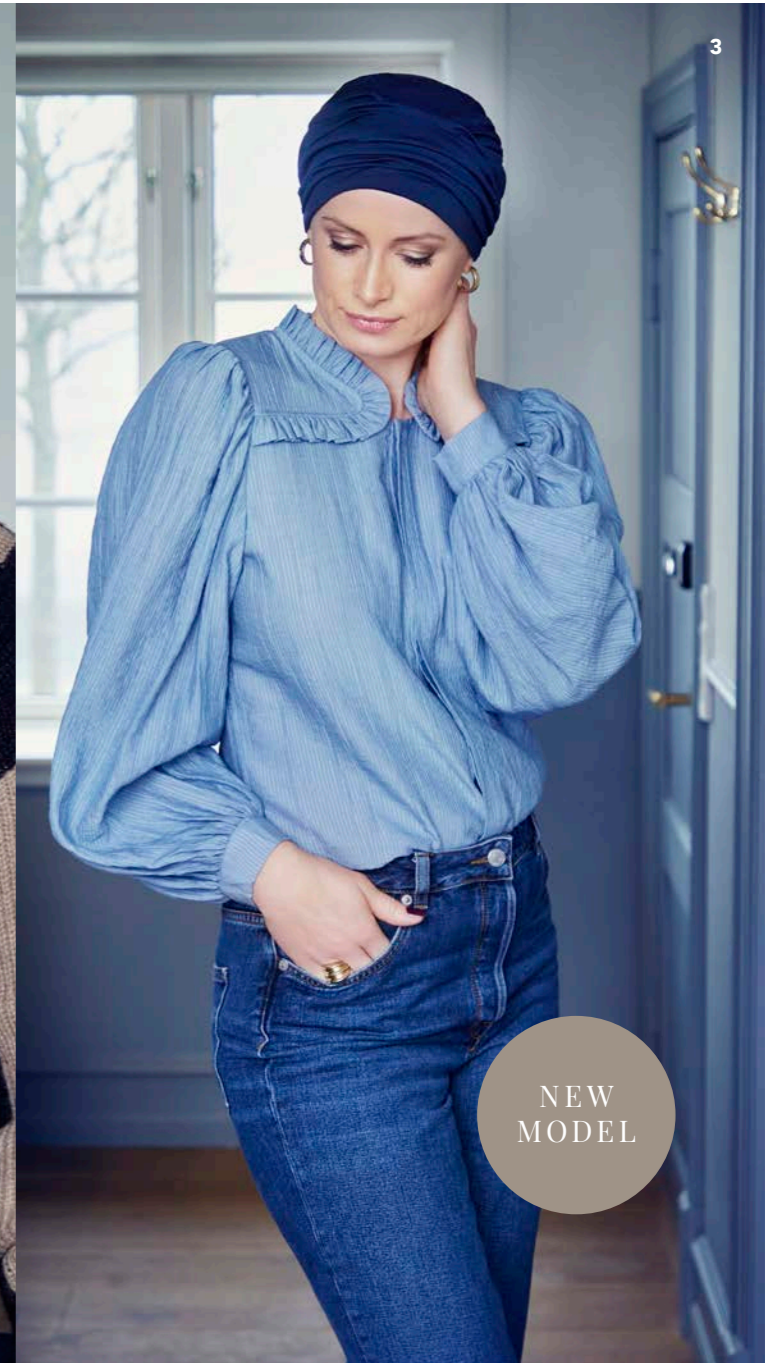


37.5® technology removes sweat in the vapor stage before liquid sweat forms



37.5® active particles are derived from nature

For further information on 37.5® go to page 67



1 - 1291-0318 B.B. Beatrice Turban w. Ribbons / 2 - 1293-0769 B.B. Becca Turban  
3 - 1539-0383 B.B. Berrie Turban



# VIVA

*Headwear*

Viva Headwear is a contemporary design line for women with hair loss. A considered design made in light and comfortable materials giving women the perfect cover and fitting.

Providing a value for money and an effortless collection to the everyday life and wardrobe, the classic Viva image will match any motion and lifestyle.

#imwearingviva

NEW  
MODEL

1556-0894 Lea · V Turban

Style details page 62



NEW  
MODEL



1 - 1554-0899 Lilly · V Turban / 2 - 1554-0898 Lilly · V Turban

1



2



**2 IN 1**  
turban &  
headband

1 - 1556-0896 Lea · V Turban / 2 - 1555-0895 Emmy · V Turban





1 - 1528-0822 Luna · V Turban / 2 - 1527-0821 Luna · V Turban / 3 - 1470-0673 Nelly · V Turban  
4 - 1537-0834 Zoya · V Turban / 5 - 1534-0808 Emmy · V Turban - Printed

**2 IN 1**  
turban &  
headband

# VIVA HEAD WEAR

basics

Go all in on timeless, on-trend turbans with the new Viva **basics** line.

The soft cotton-viscose models are the perfect Grab & Go models suitable to wear with any look, being it a cool pair of jeans or a classy shirt. Basics are simply forever the number one outfit-maker!



Find more cool tube stylings on the House of Christine YouTube Channel



**2 IN 1**  
turban & headband



## *Viva* BASIC TRENDS

1 - 1355-0554 Anna · V Tube / 2 - 1552-4000 Emmy · V Turban  
3 - 1551-4003 Zoya · V Turban



**2 IN 1**  
turban &  
headband



# Boho Spirit®

HEADWEAR

The wonderful world of Boho Spirit is a palette of powerful and colourful headwear designed to give the modern bohemian woman a choice to form her own individual free spirited look and style.

From sunny-day patterns to warm and full-bloom florals, this inspiring headwear universe is created to make you look and feel chic and fabulous whatever the weather.

Prints are our favourite thing, we simply love all shades of colour and believe our boho headwear should always make you feel feminine, empowered, radiant and confident.

Whether your hair or wig is long and curly, short and sweet or you are bald and beautiful, we have the boho headwear just for you.

*"Make it your own kind of wonderful"*

3040-0892 Amber - Boho Turban Set - Printed

Style details page 64



1 - 3027-0904 Pearl - Boho Turban - Velvet / 2 - 3044-0902 Ruby Skye - Boho Hat - Velvet

1



2



NEW  
MODEL

**2 IN 1**  
turban &  
headband

1 - 3044-0903 Ruby Skye - Boho Hat - Velvet / 2 - 3045-0893 Perla - Boho Turban Set



NEW  
MODEL

**2 IN 1**  
turban &  
headband

3041-0889 Avalon - Boho Turban Set - Printed

Style details page 64

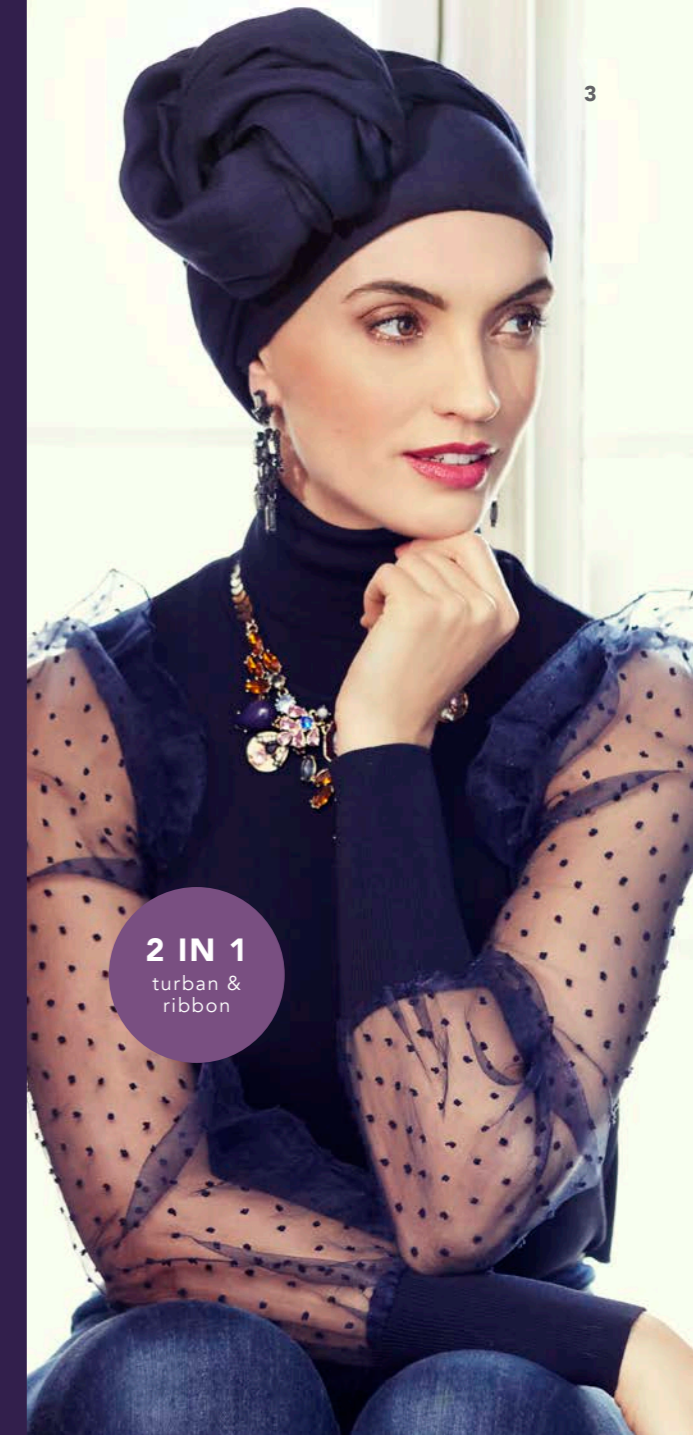


1



2

MIX & MATCH  
turban &  
ribbon



3

2 IN 1  
turban &  
ribbon

- 1 - 3026-0890 Sapphire - Boho Turban - Printed
- 2 - Mix of 3026-0890 Sapphire - Boho Turban - Printed & 3033-0841 Sapphire Boho Ribbon
- 3 - 3015-0663 Sapphire - Boho Turban Set



1 - 3021-0909 Pandora - Boho Cap / 2 - 3021-0908 Pandora - Boho Cap  
3 - 3028-0825 Pandora - Boho Cap





2 IN 1  
turban &  
headband



3 IN 1  
turban,  
ribbon &  
styling ring

1 - 3038-0811 Ruby Skye - Boho Hat / 2 - 3032-0838 Scarlett - Boho Turban Set  
3 - 3036-0828 Sienna - Boho Turban Set - Printed

# Accessory Line

CHRISTINE HEADWEAR

Find the small yet important necessities in the Christine Headwear accessory collection. A range of carefully constructed wigliners, tops, night caps etc. - all made in soft, comfortable and intelligent materials for your wellbeing.

Look out for the smart and cleverly constructed Soft Lift Hat, that will give the back of the bare head a beautiful gentle lift under your head coverings. Another one not to miss is the Christine underwear top with the revolutionary 37.5® Technology, constructed so you can easily put it on even if raising your arms can be a struggle.

Sometimes the little necessities makes the biggest difference.



1 - 1241-0318 B.B. Bea Turban

For further information on our certifications and qualities – see page 67

Style details page 54

# Underwear Collection

CHRISTINE HEADWEAR

The Christine underwear top is a unique and comfortable underwear piece developed with both intelligent features and materials.

Comfort in clothing, underwear in particular, is often dictated by your body temperature. It can, however, be difficult to maintain a balance at 37.5-degrees when our body goes through changes, either due to surgery, treatment for critical illnesses or when suffering from alopecia.

It can be hard to control the hot and cold flushes that makes us so uncomfortable, but this top will help you! The 37.5® Technology used in the fabric material helps control your core temperature, regulates it and will keep you in the optimal 37.5-degree comfort zone at all times.

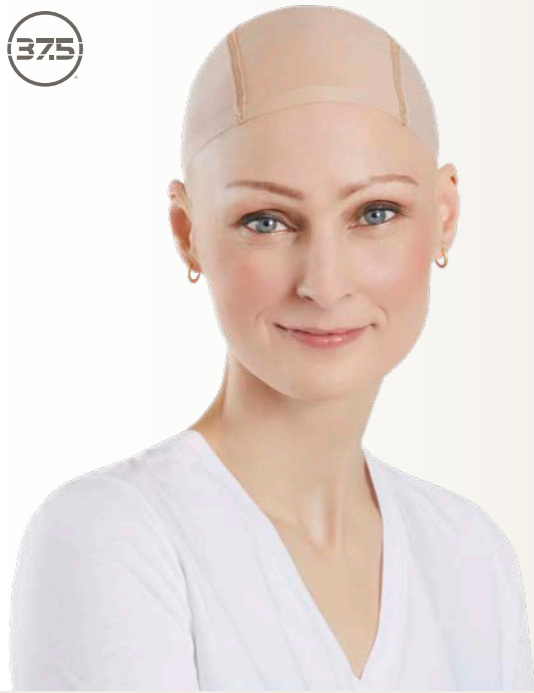
For further comfort and convenience, we've constructed the top so you can get dressed without having to pull it over your head, which can be difficult when having gone through a breast or under arm surgery. The neck line is beautifully placed and has an elegant and feminine silky satin trim.

A truly comfortable and practical top made particularly for your wellbeing.



0628 1 - 1450-0628  
Christine Top - 37.5®  
Wool/Polyester w. 37.5® Technology  
Size: S, M, L, XL





## Nouli Wigliner

CHRISTINE HEADWEAR

The Nouli Wigliner is a small hat with a perfect fit, which can be worn under a wig or your headwear for further protection. This must-have accessory keeps you cool in the heat and helps you stay warm when it is cold due to the functional Caretech® Bamboo fibres.

To add even further comfort this seamless wigliner has received an Aloe Vera treatment, which is known to have a soothing and relaxing effect on the skin.



## B.B. Belinda Wigliner


CHRISTINE HEADWEAR

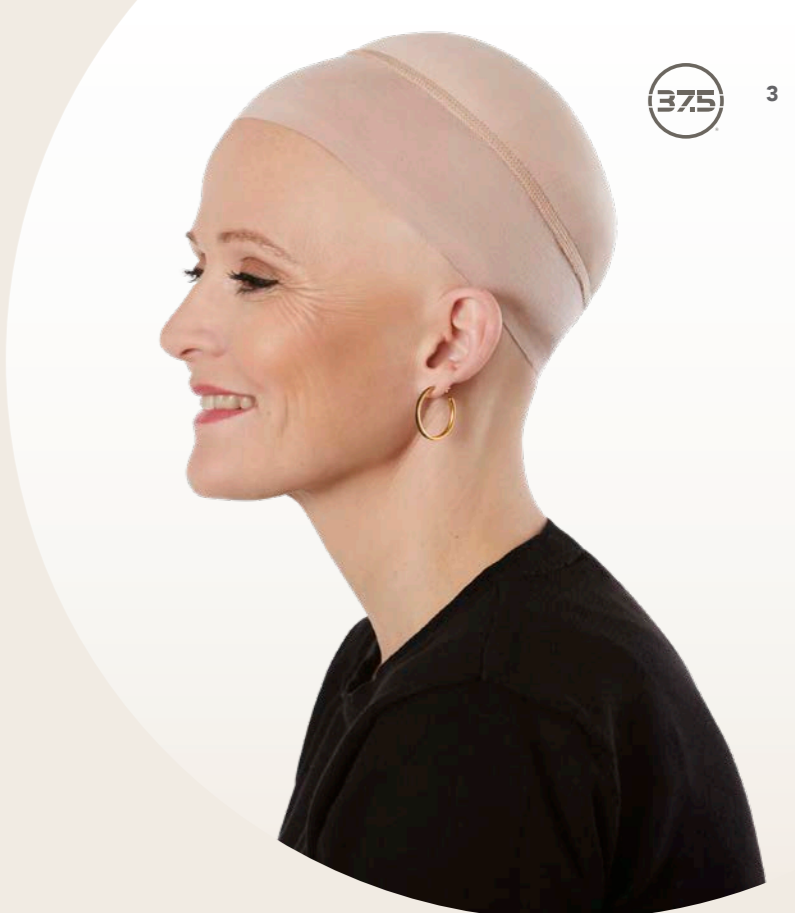
A comfortable and practical wigliner with 37.5® Technology, which will leave your sensitive scalp feeling cool and refreshed underneath your choice of head covering.

The B.B. Wigliner has a slim silicone band to ensure a secure fit and is made with a soft, see-through mesh piece down the front. This, so you can wear your wig without having to worry about the liner being visible underneath.



 **1 - 1448-0628**  
**B.B. Belinda Wigliner - 37.5®**  
 Wool/Polyester w. 37.5® Technology

 **2 - 1007-0248**  
**Nouli Wigliner w. Aloe Vera**  
 Bamboo-viscose



## Soft Lift Hat

CHRISTINE HEADWEAR

The Soft Lift Hat from Christine Headwear is a revolutionary design protected headwear piece, which will provide the perfect fit and lift under your wigs and headwear.

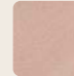
A small hat that will make a big difference to the look and feel of your head coverings, as it gently lifts and adds a fine, natural volume to the back of the head.

The soft, breathable and light 37.5® fabric material will ensure you stay comfortable as it helps the covered area maintain an optimal 37.5-degree temperature - regardless of how you choose to cover it.

To make this clever little lift, a light mesh pad has been inserted under a soft top layer. This will add a beautiful rounded shape to the back of your head whilst leaving you comfortable, feeling nothing but carefully and gently protected.

The results are nothing but fantastic and you'll find your headwear and wigs will get a brand new, fine and elegant look to it.



 **3 - 1220-0628**  
**Christine Soft Lift Hat - 37.5®**  
 Wool/Polyester w. 37.5® Technology

BEFORE

AFTER



## Night Wear Collection

CHRISTINE HEADWEAR

### CHANDRA W. CARETECH® BAMBOO

The comfortable cap, made in soft Caretech® Bamboo, is the perfect night wear model. The small and light cap is both soft and breathable and due to its functional abilities, and the bamboo features, it will keep you warm during the cold nights and cool when the nights are warm.

Chandra is suitable for use during the day too. Add a headband or a loose scarf and you'll quickly have a stylish and unique turban look.

#### 1189-0320 Chandra Night Cap

Bamboo-viscose



### B.B. BEA W. 37.5® TECHNOLOGY

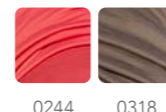
B.B. Bea is a stylish night and home wear turban solution with unique functionality. The turban is made in the popular 37.5® fabric that ensures a stable and balanced temperature of 37,5 degree Celsius on the covered area.

This turban will therefore leave your sensitive scalp area, and you, feeling both refreshed and comfortable after a good night's sleep.

For your wellbeing the inside of the Bea turban has no irritating seams and the fabric is so light and soft, you will forget you are wearing it.

#### 1241-0318 B.B. Bea Turban

Wool/Polyester w. 37.5® Technology



## Wave Swim Cap

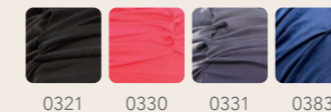
CHRISTINE HEADWEAR

The swim cap from Christine Headwear is a unique and comfortable cap suitable for all kinds of water activities. The stylish swim model covers your scalp perfectly as the cap construction ensures a tight, yet comfortable fit, during your activity.

Wave Swim Cap is suitable for both indoor and outdoor swimming.

#### 1033-0331 Wave Swim Cap

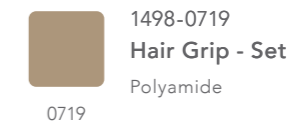
Nylon/Spandex



## Hair Grip

A hair grip helps secure your choice of head covering, when new hair starts to show.

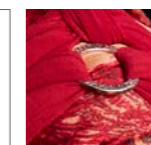
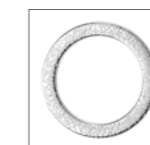
This little accessory will help keep your wig, turban or wig cap securely fitted. Use the sticky tape on the one side, attach to your head covering and let the small Velcro grippers blend gently into your hair. The hair grip is both easy to attach and comfortable to wear under your head covering.



## Styling Ring



A styling ring is a good accessory when you want to create stylish volume by adding long ribbons and scarves to your turbans. Use it to secure your favorite ones and create a knot, a bow, a braid or anything you like. Visit House of Christine on YouTube for styling tips and ideas.



Page 49  
3037-0800  
Styling Ring  
Measurements: 42x30x1,5 mm.  
Nickel free metal



# Soft Line Collection

CHRISTINE HEADWEAR

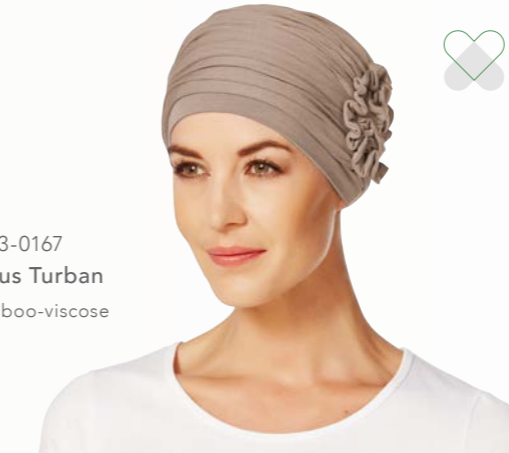
The multi-functional Caretech® Bamboo Soft Line collection consists of a variety of our most popular turbans and headbands all available in a large selection of basic colours.

The styles in this collection are tailored to ensure they stay in place all day during both sports and daily activities.

The all-natural bamboo-viscose fabric is breathable, moisture absorbent and extremely soft and comfortable, keeping your head warm and dry at all times.



1000-0255  
**Yoga Turban**  
Bamboo-viscose



1003-0167  
**Lotus Turban**  
Bamboo-viscose



1510-0384  
**Shakti Turban**  
Bamboo-viscose



# Chitta Headband

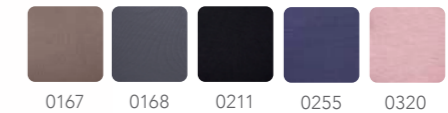
CHRISTINE HEADWEAR

A MULTI-FUNCTIONAL ACCESSORY

The Christine Headwear headband, made in our unique and soft Caretech® Bamboo, is the perfect accessory. Use it with your favourite turban for added volume or with your own hair or wig for extra comfort and a stylish look.



1006-0320  
**Chitta Headband**  
Bamboo-viscose



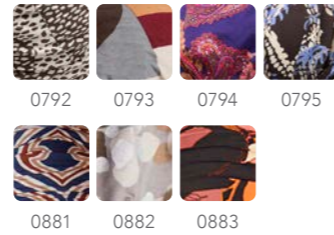
1010-0619  
**Chitta Headband - Printed**  
Bamboo-viscose



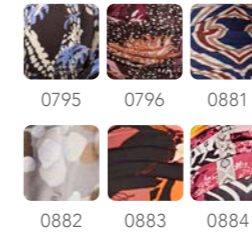


# Collection Overview

Page 6, 11, 14  
1418-0883  
**Shakti Turban - Printed**  
Bamboo-viscose



Page: Front page, 7, 10, 12, 15  
1008-0882  
**Lotus Turban - Printed**  
Bamboo-viscose



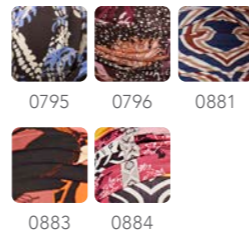
Page 18-19  
1533-0827  
**Aurelia Hat**  
Lambswool / Polyester w. cotton lining



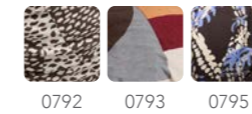
Page 7, 14  
1520-0901  
**Shakti Turban w. Printed Headband**  
Bamboo-viscose



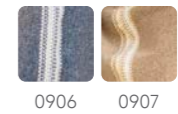
Page 4-5, 10, 13  
1419-0881  
**Beatrice Turban w. Ribbons**  
Bamboo-viscose



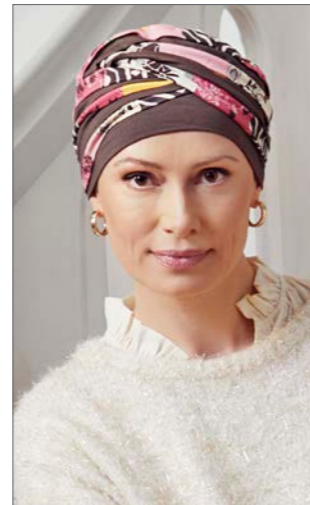
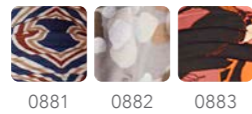
Page 17  
1529-0795  
**Amia Turban - Printed**  
Bamboo-viscose



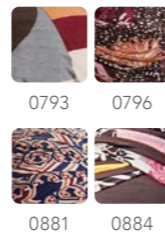
Page 20  
1548-0906  
**Christine Poncho**  
Wool / Cashmere



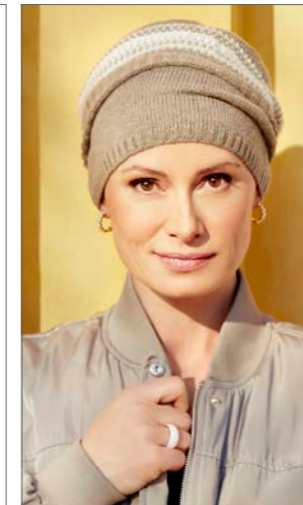
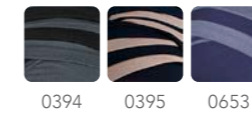
Page 7, 8-9, 14  
2000-0882  
**Yoga Turban - Printed**  
Bamboo-viscose



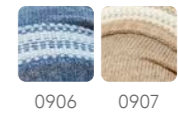
Page 10, 12  
1331-0884  
**Shanti Turban w. Print**  
Bamboo-viscose




Page 16  
1461-0653  
**Shanti Turban - Mixed Colours**  
Bamboo-viscose







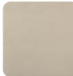




Page 20, 21  
1547-0907  
**Hazel Knitted Hat**  
Wool / Cashmere




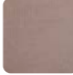






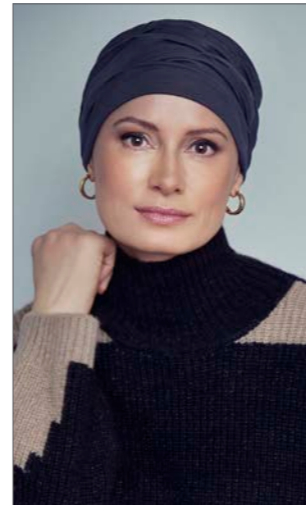
Page 22  
1490-0774  
**Nomi Turban**  
Supima Cotton

			
0655	0656	0657	0725
			
0766	0767	0774	0845



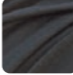



Page 22  
1484-0657  
**Zuri Turban**  
Supima Cotton

		
0655	0656	0657
		
0725	0774	0845




Page 25  
1293-0769  
**B.B. Becca Turban**  
Wool/Polyester w. 37.5<sup>®</sup> Technology


		
0318	0383	0769






1508-0804  
**Nava Turban**  
Supima Cotton



0804

**2 IN 1**  
turban & headband

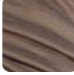

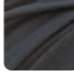




Page 22  
1521-0656  
**Sena Turban**  
Supima Cotton

		
0655	0656	0657






Page 24  
1291-0318  
**B.B. Beatrice Turban w. Ribbons**  
Wool/Polyester w. 37.5<sup>®</sup> Technology

			
0318	0383	0769	0844

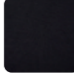




1532-0796  
**Belisa Turban w. Ribbons - Printed**  
Bamboo-viscose

	
0794	0796










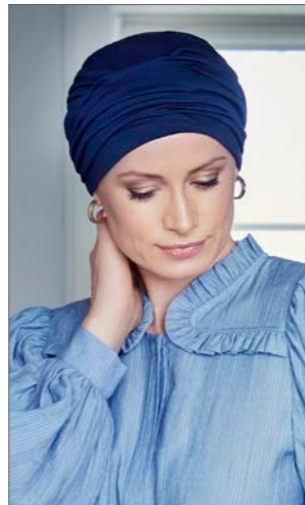
1398-0211  
**Nadi Turban**  
Bamboo-viscose

	
0211	0384

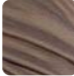


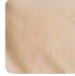



Page 23  
1438-0655  
**Mila Turban**  
Supima Cotton

			
0655	0656	0657	0725
			
0766	0767	0774	0845




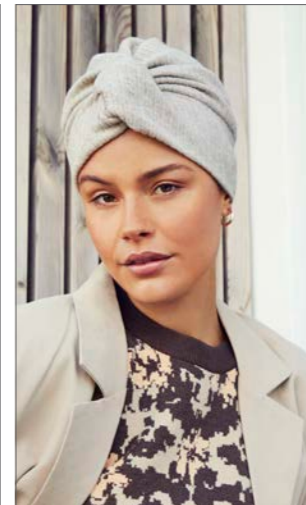
Page 25  
1539-0383  
**B.B. Berrie Turban**  
Wool/Polyester w. 37.5<sup>®</sup> Technology

			
0318	0383	0769	0844





1507-0829  
**Shakti Turban**  
Bamboo-viscose


0829



Page: Front page, 28, 29  
1554-0899  
**Lilly · V Turban**  
Viscose / Polyester / Acrylic  
w. cotton-viscose lining

	
0898	0899



Page 31  
1555-0895  
**Emmy · V Turban**  
Polyester w. cotton-viscose lining



0895

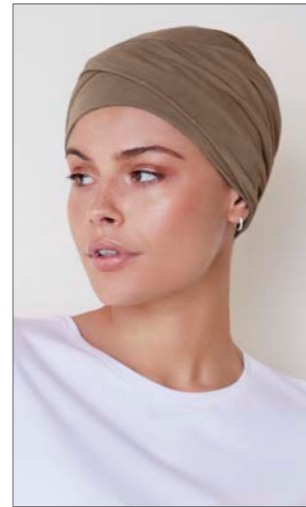
**2 IN 1**  
turban &  
headband



Page 32  
1528-0822  
**Luna · V Turban**  
Polyester w. cotton-viscose lining



0822



Page 35  
1551-4003  
**Zoya · V Turban**  
Cotton / Viscose



4000

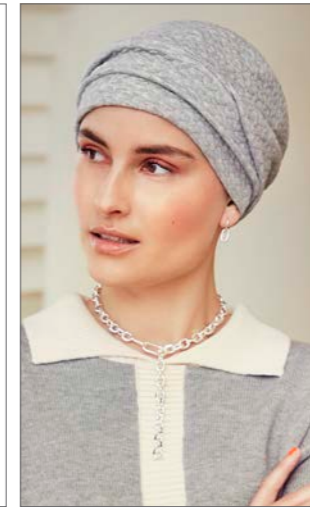
4001

4003



4004

4005

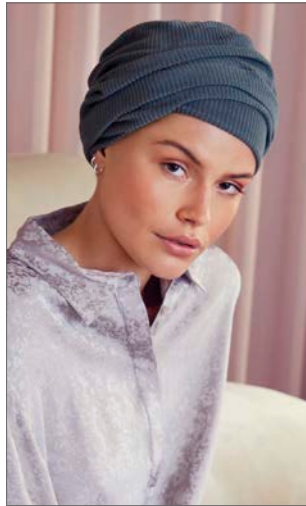


Page 33  
1470-0673  
**Nelly · V Turban**  
Polyester w. bamboo-viscose lining



0673

0674

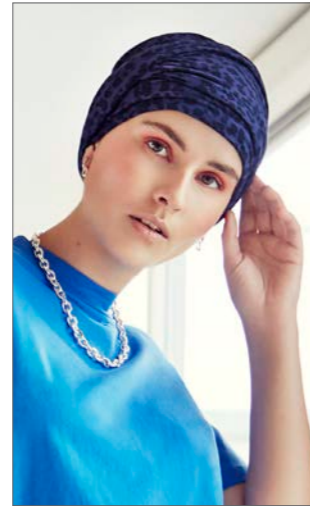


Page 26-27, 30  
1556-0896  
**Lea · V Turban**  
Polyester w. cotton-viscose lining



0894

0896

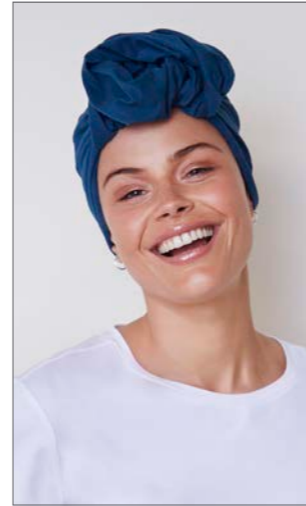


Page 33  
1534-0808  
**Emmy · V Turban - Printed**  
Modal w. bamboo-viscose lining



0808

**2 IN 1**  
turban &  
headband



Page 34  
1355-0554  
**Anna · V Tube**  
Cotton / Viscose



0325

0551

0552

0553



0554

0555

0556

0608

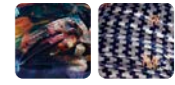


0609

0625



Page 2, 39, 40  
3044-0903  
**Ruby Skye - Boho Hat - Velvet**  
Polyester w. cotton-viscose lining



0902

0903

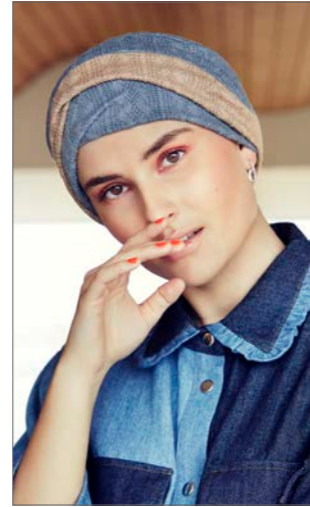


Page 32  
1527-0821  
**Luna · V Turban**  
Polyester w. bamboo-viscose lining



0791

0821

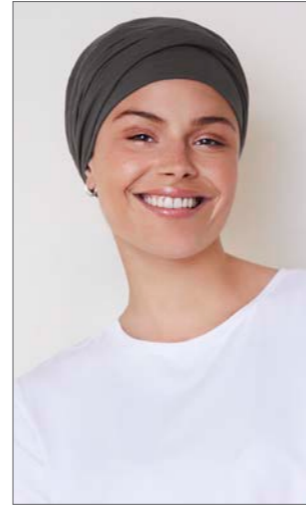


Page 33  
1537-0834  
**Zoya · V Turban**  
Polyester w. viscose-mix lining



0810

0834



Page 35  
1552- 4000  
**Emmy · V Turban**  
Cotton / Viscose



4000

4001

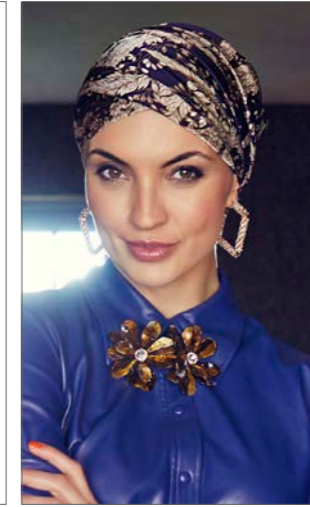
4003



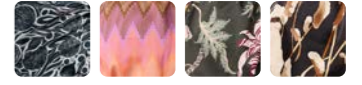
4004

4005

**2 IN 1**  
turban &  
headband



Page 44, 45  
3026-0890  
**Sapphire - Boho Turban - Printed**  
Polyester w. bamboo-viscose lining



0738

0801


0802

0830




0890

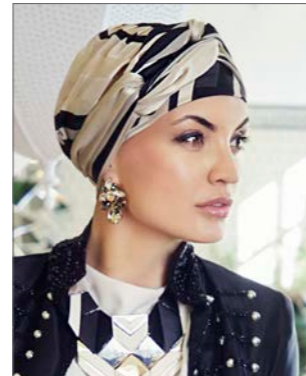





Page 38  
3027-0904  
**Pearl - Boho Turban - Velvet**  
Polyester w. bamboo-viscose lining



0904




Page: Front page, 36-37  
3040-0892  
**Amber - Boho Turban Set - Printed**  
Polyester w. bamboo-viscose lining




0831 0832 0892

**2 IN 1**  
turban & headband

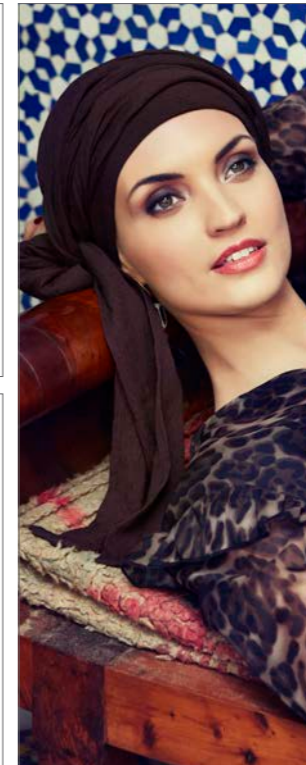


Page 48  
3032-0838  
**Scarlett - Boho Turban Set**  
Polyester w. viscose-mix lining

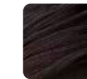


0837 0838 0843

**2 IN 1**  
turban & headband




3001-0579  
**Sapphire - Boho Turban Set**  
Rayon w. cotton lining

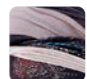


0579

**2 IN 1**  
turban & ribbon




Page 41  
3045-0893  
**Perla - Boho Turban Set**  
Polyester w. cotton-viscose lining




0893

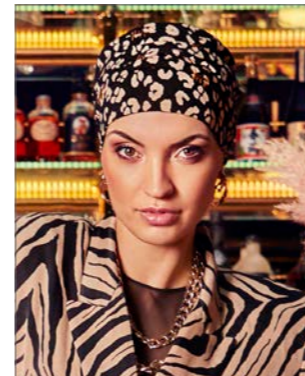
**2 IN 1**  
turban & headband



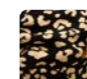
Page 46, 47  
3021-0909  
**Pandora - Boho Cap**  
Polyester w. cotton-viscose lining




0826 0908 0909



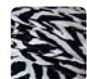
Page 48  
3038-0811  
**Ruby Skye - Boho Hat**  
Viscose / Polyester w. bamboo-viscose lining



0811

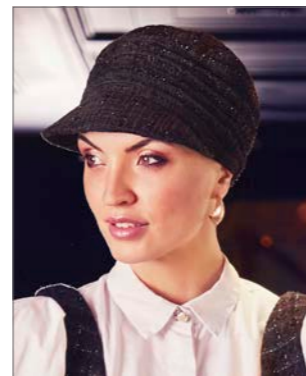


Page: 42-43  
3041-0889  
**Avalon - Boho Turban Set - Printed**  
Polyamide w. cotton-viscose lining




0889


**2 IN 1**  
turban & headband



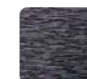
Page 47  
3028-0825  
**Pandora - Boho Cap**  
Polyester



0825




3030-0744  
**Ines - Boho Scarf**  
Polyester w. bamboo-viscose lining




0744


3035-0873  
**Scarlett - Boho Headband**  
Polyester



0872 0873 0874 0875




Page 45  
3015-0663  
**Sapphire - Boho Turban Set**  
Viscose w. cotton lining




0614 0615 0663

**2 IN 1**  
turban & ribbon




Page 49  
3036-0828  
**Sienna - Boho Turban Set - Printed**  
Polyester w. viscose-mix lining

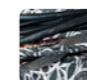


0828

**3 IN 1**  
turban, ribbon & styling ring




3031-0745  
**Scarlett - Boho Turban Set - Printed**  
Polyester w. bamboo-viscose lining




0745

**2 IN 1**  
turban & headband

Page 45  
3033-0878  
**Sapphire - Boho Ribbon**  
Polyester



0760 0841 0842 0876



0877 0878

# Let's Express

Arrivals you don't want to miss!

This autumn we are launching two beautiful, limited-edition models that you do not want to miss out on.



**2 IN 1**  
turban & headband

**LAUNCH**

- 25. SEPTEMBER -

VIVA  
Headwear

The Ella · V model consists of a soft cotton-viscose base and a gorgeous headband with a knot-detail at the front - a stylish autumn must-have.

1553-4000  
Ella · V Turban  
Cotton / Viscose



4000

NEW  
MODELS



**LAUNCH**

- 23. OCTOBER -

Boho Spirit  
HEADWEAR

Faden has a silky sateen base and a fashionable headband with a smart buckle detail. A true Boho spirited model with beautiful colours and a chic design.

3039-0887  
Faden - Boho Turban - Printed  
Polyester w. cotton-viscose lining



0887

20  
YEARS



The Christine Headwear products are CE and UKCA labelled, which means they classify as medical devices according to the EU Directive (MDR 2017/745) and UK Medical Device Regulations 2002 (as amended) concerning medical devices.

The CE and UKCA marks are your guarantee that the marked products are compliant with the required legislations regarding medical equipment and garments, and therefore are appropriate and safe to use and wear.

For further information please go to our website  
<https://www.houseofchristine.com/user-info-ce-marked>



We recommend handwashing your new headwear and laying it flat to dry. Do not tumble dry.



This catalogue is printed on FSC and Nordic Ecolabel certified paper.



37.5<sup>®</sup> TECHNOLOGY

Comfort in clothing is dictated by our temperature and the humidity next to our skin, known as our microclimate. When our microclimate balances at 37.5% relative humidity and our core temperature balances at 37.5 degrees, we are in the optimal comfort zone.

37.5<sup>®</sup> Technology headwear and clothing helps control the core temperature by accelerating the movement of moisture vapour before it can turn to liquid sweat.

If we get warm and damp, the 37.5<sup>®</sup> products will dry faster – up to 5 times faster than a similar product without 37.5<sup>®</sup> Technology. And, when moisture is removed from our headwear and clothing, we stay warmer when it's cold and cooler when it's warm.

The active particles used in 37.5<sup>®</sup> are derived from natural sources such as coconut shells and volcanic minerals. A combination of these special sources and the product features makes this a rather unique and intelligent headwear and clothing line.

Find further information about product care and safety on our website.

CARETECH<sup>®</sup> BAMBOO w/ALOE VERA  
CARETECH<sup>®</sup> BAMBOO

CARETECH<sup>®</sup> SUPIMA COTTON

The Christine Headwear bamboo and Supima fabrics are all labeled with a Caretech<sup>®</sup> tag.

Caretech<sup>®</sup> is your assurance that the headwear made from these specific fabrics are not only CE and Standard 100 by Oeko-Tex certified, but also developed and produced especially for the Christine Headwear collections. Caretech<sup>®</sup> because we believe in providing a high quality, exclusive and conscious headwear collection, for the beautiful you.



The Christine Headwear bamboo-viscose, Supima cotton, linen and Body Balance products are Standard 100 by Oeko-Tex certified.

The Oeko-Tex certification is your assurance that the headwear product does not contain or give off any harmful substances.

Follow House of Christine



Let's meet on #friendsofchristine

We couldn't have done it without you!

Broløkke Herregaard, thank you for your kind and warm hospitality, we can't wait to visit your beautiful place again. The Normans, thank you for all your stories, colours and boheme experiences. Huset I\_RO, a day of absolute calmness and aesthetic peacefulness – thank you for having us.



*Christine*  
HEADWEAR

VIVA  
Headwear

*Bobo Spirit*  
HEADWEAR



HOUSE of CHRISTINE

HEADWEAR

The Headwear Company · Denmark  
Contact: +45 96 60 43 10 · info@houseofchristine.com  
www.houseofchristine.com

#friendsofchristine



Be our friend on Instagram @houseofchristine\_headwear

