

Aderans

SENTOO

COLLECTION

PREMIUM
BY SENTOO

LOTUS
BY SENTOO

CREATIVE
BY SENTOO

ESSENTIAL
BY SENTOO



LOTUS | HONESTY



PREMIUM | AYA



NEW

LOTUS | FIORE



LOTUS | HAZEL



PREMIUM | KINU



CREATIVE | DALIDA



PREMIUM | MAIKO

SENTOO COLLECTION

Enjoy the newest edition of the Sentoo Collection: an exclusive selection of wig ranges. Crafted for today's client by top designers, Sentoo wigs are unique in their superior finish and design. The Sentoo Collection is unlike any other, encompassing different ranges to ensure the needs of every customer is met.

THE ADERANS TEAM

Oppdag/Oplev nye Sentoo Collection, et eksklusivt utvalg/udvalg av parykker. Sentoo parykker er laget/fremstillet av/af topdesigners – for dagens kunder, og har en unik finish og design. Sentoo Collection er i en klasse for seg/sig, og består av ulike/forskjellige kolleksjoner som oppfyller/dækker behovet til/hos alle kunder.

THE ADERANS TEAM



PREMIUM | SAKURA LONG

HAIR STYLES 4
FROM SHORT TO LONG

PREMIUM 6

LOTUS 22

ESSENTIAL 42

CREATIVE 44
HUMAN HAIR
V HAIR-MIX
HAIR PIECES

HAIR CARE 62

ACCESSORIES 63

EYELASHES/BROWS 65

STYLE OVERVIEW
SIZE & CAP CONSTRUCTION
HAIR LENGTH
COLOUR OVERVIEW

PREMIUM 68

LOTUS 72

CREATIVE 76

COLOURS 78



SENTOO COLLECTION

PREMIUM
 LOTUS
 CREATIVE
 ESSENTIAL





PREMIUM | KINU & SAKURA LONG



Hand-tied
Monofilament
Soft Lace Front

Håndknyttet/Handknetet
Monofilament
Soft Lace Front

PREMIUM | SANGO & AYA



PREMIUM

BY SENTOO

STYLE OVERVIEW | STIL/MODELLOVERSIKT PAGE 68

Premium - a range of beautifully crafted synthetic fibre wigs. Our designers created the Sentoo Premium Collection with one aim in mind: producing a product that enables wearers of any age to feel comfortable all day long. The Premium range is perfect for those wishing for a natural look with easy to wear comfort and a base suited to those with a sensitive scalp.

Premium – en kolleksjon av vakre/smukke parykker i syntetfiber. Våre/Vores designere har utviklet/udviklet Sentoo Premium Collection med ett mål – å/at skape et produkt som ger/gir/giver bärare/brukere/brugere i alle åldrar/aldrer hög/høy/høj komfort hele dagen. Premium-kolleksjonen er perfekt for den som ønsker et naturlig utseende/look med hög/høy/høj komfort og stomme/base för/tilpasset sensitiv hjässa/hodebunn/hoovedbund.



27115 **MAIKO**

S M L

SIZE/STORLEK/STØRRELSE:
53-54 cm

HAIR LENGTH/HÅRLÄNGD/LÆNGDE
FRONT: 6 cm
CROWN/TOP: 6 cm
NAPE/NACKE/NAKKE: 6 cm

COLOURS/FÄRGER/FARVER
BLONDES:
134, 18/22, 20/22, 769
BROWNS:
A8
GREYS:
135, 38, 456, 56, 56/60,
60, 600

COLOUR: 56/60



MYU 27114



S M L

SIZE/STORLEK/STØRRELSE: 53-54 cm

HAIR LENGTH/HÅRLÄNGD/LÆNGDE
FRONT: 19 cm
CROWN/TOP: 23 cm
NAPE/NACKE/NAKKE: 19 cm



COLOURS/FÄRGER/FARVER

BLONDES: 134, 769, S770, A791G, A812G
BROWNS: 2/4, 4/6, 8-10/20G, A761G
REDS: S637

COLOUR: 4/6



TAMAKI 27135

S M L

SIZE/STORLEK/STØRRELSE: 53-54 cm

HAIR LENGTH/HÅRLÄNGD/LÆNGDE

FRONT: 10.5 cm
CROWN/TOP: 18 cm
NAPE/NACKE/NAKKE: 6 cm



COLOUR: 2/4

COLOURS/FÄRGER/FARVER

BLONDES: 134, 18/22, 20/22, 769, S770, A791G, A812G
BROWNS: 2/4, 4/6, 8-10/20G, S12/10, 768
REDS: S637, SA811G | GREYS: 132, 38, S456, 56, 56/60, 60, 600



YAMA 27117

S M L

SIZE/STORLEK/STØRRELSE:

53-54 cm

HAIR LENGTH/HÅRLÄNGD/LÆNGDE

FRONT: 10 cm
CROWN/TOP: 13 cm
NAPE/NACKE/NAKKE: 10 cm

COLOURS/FÄRGER/FARVER

BLONDES:
18/22, 20/22, 769, S770
BROWNS:
2/4, 4/6, 8-10/20G, S12/10, 768
REDS: S637
GREYS:
38, 56, 56/60, 60, 600



COLOUR: 12/10



27125 AYA

S M L



SIZE/STORLEK/STØRRELSE:

53-54 cm

HAIR LENGTH/HÅRLÄNGD/LÆNGDE

FRONT: 6.5 cm

CROWN/TOP: 5 cm

NAPE/NACKE/NAKKE: 5 cm

COLOURS/FÄRGER/FARVER

BLONDES:

134, 18/22, 20/22, 769, A791G

BROWNS:

2/4, 4/6, 8-10/20G, S12/10, 768

REDS:

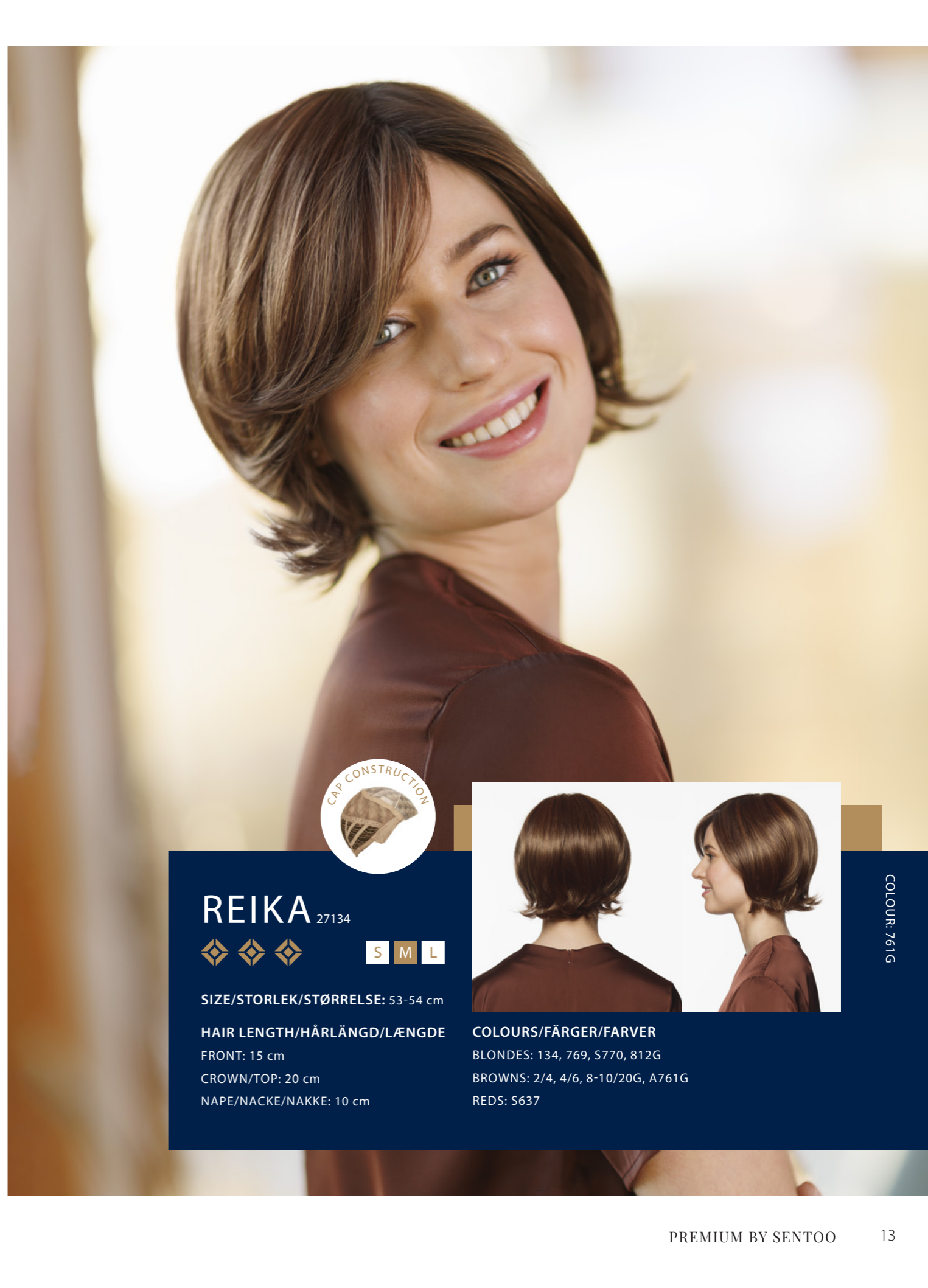
S637

GREYS:

135, 38, S456, 56, 56/60,

60, 600

COLOUR: 769



REIKA 27134



S M L

SIZE/STORLEK/STØRRELSE: 53-54 cm

HAIR LENGTH/HÅRLÄNGD/LÆNGDE

FRONT: 15 cm

CROWN/TOP: 20 cm

NAPE/NACKE/NAKKE: 10 cm



COLOURS/FÄRGER/FARVER

BLONDES: 134, 769, S770, 812G

BROWNS: 2/4, 4/6, 8-10/20G, A761G

REDS: S637

COLOUR: 761G



SANGO 27136



S M L

SIZE/STORLEK/STØRRELSE: 53-54 cm

HAIR LENGTH/HÅRLÆNGD/LÆNGDE

FRONT: 10 cm

CROWN/TOP: 33 cm

NAPE/NACKE/NAKKE: 17 cm



COLOUR: 812G

COLOURS/FÄRGER/FARVER

BLONDES: 134, 20/22, 769, 5770, 812G

BROWNS: 2/4, 4/6, 8-10/20G, 728T, A761G

REDS: 131, S637, SA811G



KINU 27133



SIZE/STORLEK/STØRRELSE: 53-54 cm

HAIR LENGTH/HÅRLÆNGD/LÆNGDE

FRONT: 14 cm
CROWN/TOP: 15 cm
NAPE/NACKE/NAKKE: 4 cm



COLOUR: S637

COLOURS/FÄRGER/FARVER

BLONDES: 134, 18/22, 20/22, 769, S770, A791G, A812G
BROWNS: 2/4, 4/6, 8-10/20G, S12/10, 768
REDS: S637, SA811G
GREYS: 132, 38, S456, 56, 56/60, 60, 600



SAKURA LONG 27130



SIZE/STORLEK/STØRRELSE:

53-54 cm

HAIR LENGTH/HÅRLÆNGD/LÆNGDE

FRONT: 21 cm
CROWN/TOP: 45 cm
NAPE/NACKE/NAKKE: 45 cm

COLOURS/FÄRGER/FARVER

BLONDES:
134, 20/22, 769, S770, A791G, 812G
BROWNS:
2/4, 4/6, 8-10/20G, 728T, A761G
REDS:
131, S637, SA811G



COLOUR: 769



27111 KYU

S M L



SIZE/STORLEK/STØRRELSE:

53-54 cm

HAIR LENGTH/HÅRLÄNGD/LÆNGDE

FRONT: 10 cm

CROWN/TOP: 10 cm

NAPE/NACKE/NAKKE: 5 cm

COLOURS/FÄRGER/FARVER

BLONDES:

134, 18/22, 20/22, 769, A791G

BROWNS:

1B, 2/4, 4/6, 8-10/20G,

S12/10, 768

REDS:

S637

GREYS:

135, 38, S456, 56, 56/60, 60, 600

27137 PETITE

SIZE/STORLEK/STØRRELSE:

51 cm

134, 18/22, 20/22, 769,

2/4, 4/6, S12/10, S637, 38,

56/60, 60, 600

COLOUR: 12/10



TANI 27124

S M L



SIZE/STORLEK/STØRRELSE: 53-54 cm

HAIR LENGTH/HÅRLÄNGD/LÆNGDE

FRONT: 9.5 cm

CROWN/TOP: 9.5 cm

NAPE/NACKE/NAKKE: 6 cm



COLOURS/FÄRGER/FARVER

BLONDES: 134, 18/22, 769

GREYS: 135, 38, S456, 56, 60, 600

COLOUR: 600



KASUMI 27122



SIZE/STORLEK/STØRRELSE: 53-54 cm

HAIR LENGTH/HÅRLÄNGD/LÆNGDE

FRONT: 11.5 cm
CROWN/TOP: 9.5 cm
NAPE/NACKE/NAKKE: 6.5 cm



COLOUR: 60

COLOURS/FÄRGER/FARVER

BLONDES: 134, 18/22, 20/22, 769
BROWNS: 4/6, 8-10/20G
GREYS: 135, 38, S456, 56, 56/60, 60, 600



SORA 27120



SIZE/STORLEK/STØRRELSE:

53-54 cm

HAIR LENGTH/HÅRLÄNGD/LÆNGDE

FRONT: 7.5 cm
CROWN/TOP: 19 cm
NAPE/NACKE/NAKKE: 7 cm

COLOURS/FÄRGER/FARVER

BLONDES: 134, 20/22, 713, 769, S770, A791G, A812G

BROWNS: 1B, 2/4, 4/6, 8-10/20G, S12/10, 761G

REDS: S637, SA811G

GREYS: 38, 56, 56/60

PETITE 27138

SIZE/STORLEK/STØRRELSE:

51 cm

134, 20/22, 769, 2/4, 4/6, 8-10/20G, A761G, A791G, A812G, SA811G, 38, 56/60

COLOUR: S770





LOTUS | PRIMROSE & IRIS

LOTUS | FUCHSIA & DAISY



LOTUS

BY SENTOO

STYLE OVERVIEW | STIL/MODELLOVERSIKT PAGE 72

The Lotus Collection is an expertly crafted range of wigs providing the best possible fit and comfort, whilst never sacrificing on style. Offering a lace front and differing cap constructions in mono, hand tied or wefted, the collection caters to everybody. Produced out of passion, our highly skilled team had only one aim in mind; stylish, comfortable and natural-looking wigs to suit all ages.

Lotus Collection er en eksklusiv serie av/af peruker/parykker med optimal pasform og komfort - og som aldri går på kompromis/bekostning med snugga/flotte frisyre/frisurer. Kollektionen har/byder lacefront og olika/forskellige konstruksjoner som mono, handknuttet/håndknyttet/bundet eller med tråns/trense/tresse. Vårt/vores dygtige og engageret design team hadde endast/kun et mål på sinde: elegante, stilrene, behagelige peruker/parykker med et naturligt look, som passer til alle åldrar/aldre.



Gardenia 27015



SIZE/STORLEK/STØRRELSE: 54 cm

HAIR LENGTH/HÅRLÄNGD/LÆNGDE

FRONT: 14 cm
CROWN/TOP: 16 cm
NAPE/NACKE/NAKKE: 3 cm



NEW

COLOUR: Aspen Melange Rooted

COLOURS/FÄRGER/FARVER

MELANGE: Cherry (9/12/18), Maple (16/17/20), Midnight (4), Sandalwood (8/11/24), Walnut (6/10/14), White Oak (18/22) | ROOTED: Aspen Melange (8/22), Birch (12/14), Cherry (70/78), Dark Sand (81/85/87/91), Light Oak Melange (75/89/92), Purple Heart (4/74), Red Chestnut (4/33), Sandalwood (72/73/79) | GREYS: Iced Melange (38/42/60), Silver (62), Smokey Melange (34/36/39), Sugar Berry (60/600MP)



Hazel 27006



SIZE/STORLEK/STØRRELSE:

53 cm

HAIR LENGTH/HÅRLÄNGD/LÆNGDE

FRONT: 13 cm
CROWN/TOP: 25 cm
NAPE/NACKE/NAKKE: 15 cm

COLOURS/FÄRGER/FARVER

MELANGE:

Cherry (9/12/18), Maple (16/17/20), Midnight (4), Sandalwood (8/11/24), Walnut (6/10/14), White Oak (18/22)

ROOTED:

Aspen Melange (8/22), Birch (12/14), Cherry (70/78), Dark Sand (81/85/87/91), Light Oak Melange (75/89/92), Sandalwood (72/73/79), Sycamore Melange (6/70/23)

GREYS:

Iced Melange (38/42/60), Smokey Melange (34/36/39)



COLOUR: Midnight



27007 Bluebell

S M L



SIZE/STORLEK/STØRRELSE:

53 cm

HAIR LENGTH/HÅRLÄNGD/LÆNGDE

FRONT: 38 cm

CROWN/TOP: 48 cm

NAPE/NACKE/NAKKE: 33 cm

COLOURS/FÄRGER/FARVER

MELANGE:

Cherry (9/12/18), Maple (16/17/20),
Midnight (4), Walnut (6/10/14),
White Oak (18/22)

ROOTED:

Aspen Melange (8/22), Birch (12/14),
Cherry (70/78), Light Oak Melange
(75/89/92), Red Chestnut (4/33),
Sycamore Melange (6/70/23),
ZebraWood (2/60V)

GREYS:

Driftwood (38), Iced Melange
(38/42/60), Silver (62)

COLOUR: Sycamore Melange Rooted



Primrose 27014



S M L

SIZE/STORLEK/STØRRELSE: 54 cm

HAIR LENGTH/HÅRLÄNGD/LÆNGDE

FRONT: 16 cm

CROWN/TOP: 10 cm

NAPE/NACKE/NAKKE: 3 cm



COLOURS/FÄRGER/FARVER

MELANGE: Cherry (9/12/18), Maple (16/17/20), Midnight (4), Sandalwood
(8/11/24), Walnut (6/10/14), White Oak (18/22) | ROOTED: Aspen Melange
(8/22), Birch (12/14), Cherry (70/78), Dark Sand (81/85/87/91), Light Oak Melange
(75/89/92), Sandalwood (72/73/79), Sycamore Melange (6/70/23)
| GREYS: Iced Melange (38/42/60), Smokey Melange (34/36/39)

COLOUR: Aspen Melange Rooted



Honesty 27017



SIZE/STORLEK/STØRRELSE: 56 cm

HAIR LENGTH/HÅRLÆNGD/LÆNGDE

FRONT: 32 cm
CROWN/TOP: 44 cm
NAPE/NACKE/NAKKE: 40 cm



NEW

COLOUR: Walnut Melange

COLOURS/FÄRGER/FARVER

MELANGE: Maple (16/17/20), Midnight (4), Walnut (6/10/14), White Oak (18/22)
| ROOTED: Aspen Melange (8/22), Birch (12/14), Cherry (70/78), Light Oak Melange (75/89/92), Purple Heart (4/74), Red Chestnut (4/33), Sandalwood (72/73/79), Sycamore Melange (6/70/23) | GREYS: Iced Melange (38/42/60), Silver (62), Sugar Berry (60/600MP)



Fiore 27013



SIZE/STORLEK/STØRRELSE:

55-56 cm

HAIR LENGTH/HÅRLÆNGD/LÆNGDE

FRONT: 7 cm
CROWN/TOP: 11 cm
NAPE/NACKE/NAKKE: 3 cm

COLOURS/FÄRGER/FARVER

MELANGE:
Cherry (9/12/18), Maple (16/17/20),
Midnight (4), Sandalwood (8/11/24),
Walnut (6/10/14), White Oak (18/22)
ROOTED:
Aspen Melange (8/22), Birch (12/14),
Cherry (70/78), Dark Sand (81/85/87/91),
Light Oak Melange (75/89/92),
Red Chestnut (4/33), Sandalwood
(72/73/79), ZebraWood (2/60V)
GREYS:
Iced Melange (38/42/60), Silver (62),
Smokey Melange (34/36/39)

NEW



COLOUR: Light Oak Melange Rooted



27004 Blossom

S M L



SIZE/STORLEK/STØRRELSE:

55 cm

HAIR LENGTH/HÅRLÆNGD/LÆNGDE

FRONT: 5 cm

CROWN/TOP: 10 cm

NAPE/NACKE/NAKKE: 5 cm

COLOURS/FÄRGER/FARVER

MELANGE:

Aspen (134), Cherry (9/12/18),
Midnight (4), Sandalwood (8/11/24),
Walnut (6/10/14), White Oak (18/22)

ROOTED:

Aspen Melange (8/22),
Birch (12/14), Dark Sand (81/85/87/91),
Light Oak Melange (75/89/92)

GREYS:

Hickory (456S), Iced Melange
(38/42/60), Silver (62),
Smokey Melange (34/36/39)

COLOUR: Cherry Melange



Tulip 27009



S M L

SIZE/STORLEK/STØRRELSE: 53 cm

HAIR LENGTH/HÅRLÆNGD/LÆNGDE

FRONT: 9 cm

CROWN/TOP: 12.5 cm

NAPE/NACKE/NAKKE: 8 cm



COLOURS/FÄRGER/FARVER

MELANGE: Maple (16/17/20), Midnight (4), Sandalwood (8/11/24), Walnut
(6/10/14) | ROOTED: Light Oak Melange (75/89/92), Red Chestnut (4/33),
Tobacco (71/74/76), ZebraWood (2/60V) | GREYS: Iced Melange (38/42/60),
Smokey Melange (34/36/39)

COLOUR: Tobacco Rooted



Iris 27010



SIZE/STORLEK/STØRRELSE:

53 cm

HAIR LENGTH/HÅRLÄNGD/LÆNGDE

FRONT: 20 cm

CROWN/TOP: 22 cm

NAPE/NACKE/NAKKE: 6.5 cm

COLOURS/FÄRGER/FARVER

MELANGE:

Aspen (134), Ember (2/32),
Maple (16/17/20), Midnight (4),
Walnut (6/10/14)

ROOTED:

Light Oak Melange (75/89/92),
Tobacco (71/74/76), ZebraWood
(2/60V)

GREYS:

Iced Melange (38/42/60),
Sugar Berry (60/600MP)



COLOUR: Walnut Melange



Fuchsia 27016



SIZE/STORLEK/STØRRELSE: 56 cm

HAIR LENGTH/HÅRLÆNGD/LÆNGDE

FRONT: 30 cm

CROWN/TOP: 24 cm

NAPE/NACKE/NAKKE: 9 cm



NEW

COLOUR: Birch Long Rooted

COLOURS/FÄRGER/FARVER

MELANGE: Maple (16/17/20), Midnight (4), Walnut (6/10/14), White Oak (18/22) | ROOTED: Aspen Melange (8/22), Birch (12/14), Cherry (70/78), Light Oak Melange (75/89/92), Purple Heart (4/74), Red Chestnut (4/33), Sandalwood (72/73/79), Sycamore Melange (6/70/23) | GREY: Iced Melange (38/42/60), Silver (62), Sugar Berry (60/600MP)



Dahlia 27005



SIZE/STORLEK/STØRRELSE:

54 cm

HAIR LENGTH/HÅRLÆNGD/LÆNGDE

FRONT: 8 cm

CROWN/TOP: 10 cm

NAPE/NACKE/NAKKE: 5 cm

COLOURS/FÄRGER/FARVER

MELANGE:

Cherry (9/12/18), Maple (16/17/20), Midnight (4), Sandalwood (8/11/24), Walnut (6/10/14), White Oak (18/22)

ROOTED:

Aspen Melange (8/22), Birch(12/14), Cherry (70/78), Dark Sand (81/85/87/91), Light Oak Melange (75/89/92), Red Chestnut (4/33), Sandalwood (72/73/79), Zebrawood (2/60V)

GREYS:

Iced Melange (38/42/60), Silver (62), Smokey Melange (34/36/39)



COLOUR: Sandalwood Melange



27002 **Jasmine**

S M L 

SIZE/STORLEK/STØRRELSE:
51.5 cm

HAIR LENGTH/HÅRLÆNGD/LÆNGDE
FRONT: 13 cm
CROWN/TOP: 22 cm
NAPE/NACKE/NAKKE: 6 cm

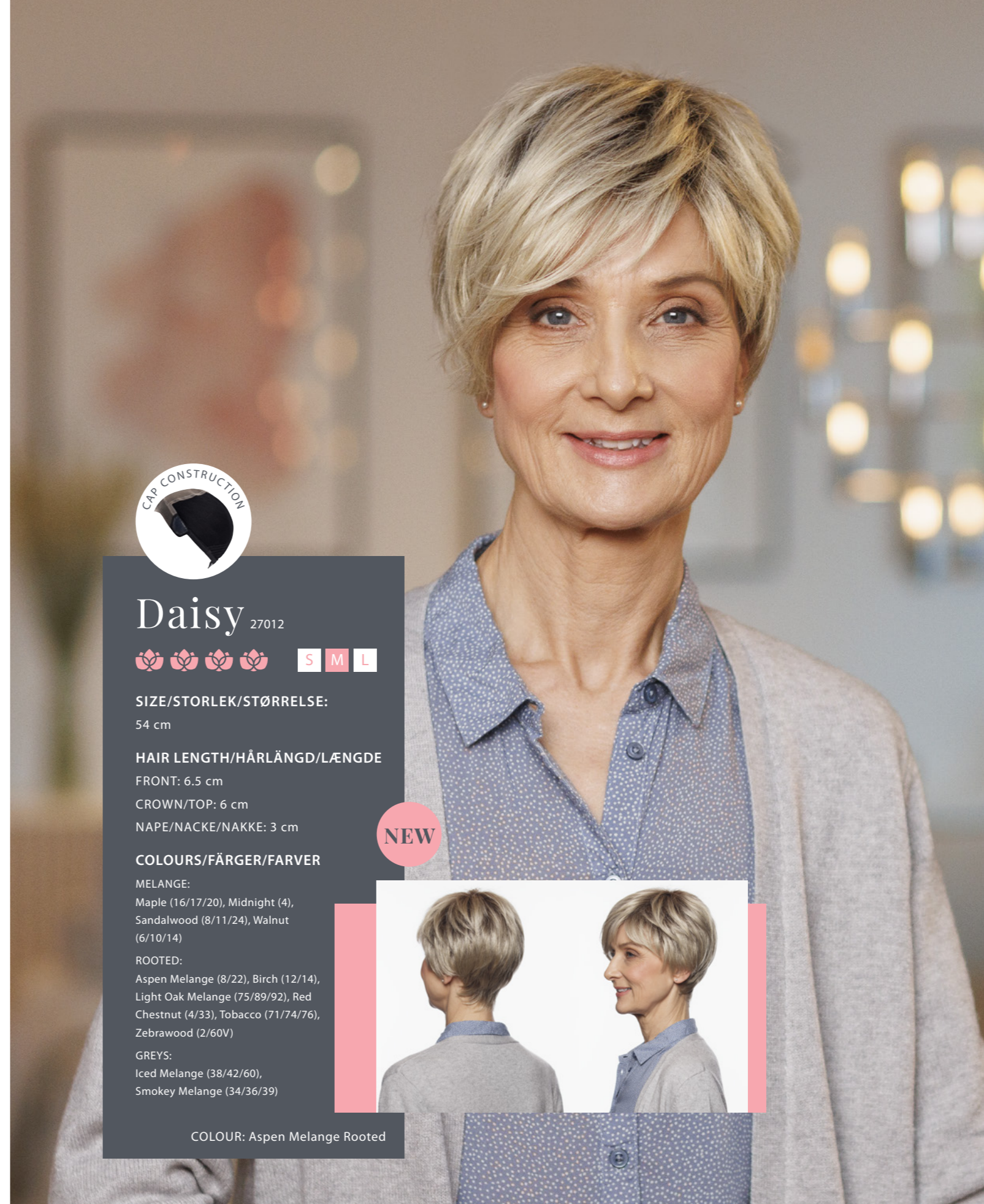
COLOURS/FÄRGER/FARVER

MELANGE:
Cherry (9/12/18), Maple (16/17/20),
Midnight (4), Sandalwood (8/11/24),
Walnut (6/10/14), White Oak (18/22)

ROOTED:
Aspen Melange (8/22), Birch(12/14),
Cherry (70/78), Dark Sand (81/85/87/91),
Light Oak Melange (75/89/92),
Red Chestnut (4/33),
Sandalwood (72/73/79)

GREYS:
Iced Melange (38/42/60), Silver (62),
Smokey Melange (34/36/39),
Sugar Berry (60/600MP)

COLOUR: Silver



Daisy 27012

 S M L

SIZE/STORLEK/STØRRELSE:
54 cm

HAIR LENGTH/HÅRLÆNGD/LÆNGDE
FRONT: 6.5 cm
CROWN/TOP: 6 cm
NAPE/NACKE/NAKKE: 3 cm

COLOURS/FÄRGER/FARVER

MELANGE:
Maple (16/17/20), Midnight (4),
Sandalwood (8/11/24), Walnut
(6/10/14)

ROOTED:
Aspen Melange (8/22), Birch (12/14),
Light Oak Melange (75/89/92), Red
Chestnut (4/33), Tobacco (71/74/76),
ZebraWood (2/60V)

GREYS:
Iced Melange (38/42/60),
Smokey Melange (34/36/39)

COLOUR: Aspen Melange Rooted

NEW





27011 Aster

S M L

SIZE/STORLEK/STØRRELSE:
53 cm

HAIR LENGTH/HÅRLÄNGD/LÆNGDE
FRONT: 10 cm
CROWN/TOP: 26 cm
NAPE/NACKE/NAKKE: 10 cm

COLOURS/FÄRGER/FARVER

MELANGE:
Cherry (9/12/18) Maple (16/17/20),
Sandalwood (8/11/24), Walnut
(6/10/14), White Oak (18/22)

ROOTED:
Light Oak Melange (75/89/92),
Red Chestnut (4/33),
Sycamore Melange (6/70/23)

GREYS:
Driftwood (38), Iced Melange
(38/42/60), Silver (62)



COLOUR: Light Oak Melange Rooted



Peony 27003

S M L

SIZE/STORLEK/STØRRELSE: 53 cm

HAIR LENGTH/HÅRLÄNGD/LÆNGDE
FRONT: 11 cm
CROWN/TOP: 7 cm
NAPE/NACKE/NAKKE: 5 cm



COLOURS/FÄRGER/FARVER

MELANGE: Aspen (134), Cherry (9/12/18), Sandalwood (8/11/24), Walnut
(6/10/14), White Oak (18/22) | ROOTED: Dark Sand (81/85/87/91),
Light Oak Melange (75/89/92), Cherry (70/78), Tobacco (71/74/76)
| GREY: Iced Melange (38/42/60), Smokey Melange (34/36/39)

COLOUR: Walnut Melange



Poppy 27008



S M L

SIZE/STORLEK/STØRRELSE: 53 cm

HAIR LENGTH/HÅRLÄNGD/LÆNGDE

FRONT: 32 cm

CROWN/TOP: 36 cm

NAPE/NACKE/NAKKE: 36 cm



COLOUR: Light Oak Melange Rooted

COLOURS/FÄRGER/FARVER

MELANGE: Maple (16/17/20), Midnight (4), Walnut (6/10/14), White Oak (18/22) | ROOTED: Cherry (70/78), Light Oak Melange (75/89/92), Red Chestnut (4/33), Sandalwood (72/73/79), Sycamore Melange (6/70/23) | GREY: Iced Melange (38/42/60), Silver (62), Sugar Berry (60/600MP)



Lily 27001



S M L

SIZE/STORLEK/STØRRELSE:

53 cm

HAIR LENGTH/HÅRLÄNGD/LÆNGDE

FRONT: 13 cm

CROWN/TOP: 17 cm

NAPE/NACKE/NAKKE: 10 cm

COLOURS/FÄRGER/FARVER

MELANGE:

Cherry (9/12/18), Ember (2/32), Maple (16/17/20), Midnight (4), Sandalwood (8/11/24), Walnut (6/10/14), White Oak (18/22)

ROOTED:

Cherry (70/78), Dark Sand (81/85/87/91), Light Oak Melange (75/89/92), Sandalwood (72/73/79)

GREYS:

Iced Melange (38/42/60), Smokey Melange (34/36/39)



COLOUR: Iced Melange

ESSENTIAL

BY SENTOO



COLOUR: Raisin Glaze

NICKY MONO

LACEFRONT - MONO - WEFT

S M L

NICKY MONO - SMALL 27148

SIZE/STORLEK/STØRRELSE: 52-53 cm

HAIR LENGTH/HÅRLÆNGD/LÆNGDE

FRONT: 32 cm
CROWN/TOP: 40 cm
NAPE/NACKE/NAKKE: 45 cm

COLOURS/FÄRGER/FARVER

BLONDES: 738
BROWNS: 6, 728, Raisin Glaze
GREY: 56/60

NICKY MONO - LARGE 22240

SIZE/STORLEK/STØRRELSE: 54-55 cm

HAIR LENGTH/HÅRLÆNGD/LÆNGDE

FRONT: 32 cm
CROWN/TOP: 40 cm
NAPE/NACKE/NAKKE: 45 cm

COLOURS/FÄRGER/FARVER

BLONDES: 12/14/26, 234/263, Gold Blond, 738
BROWNS: 6, 12, 728, Raisin Glaze
REDS: 731, Dark Rust



NICKY MONO LONG 27149

S M L

SIZE/STORLEK/STØRRELSE:

54-55 cm

HAIR LENGTH
HÅRLÆNGD/LÆNGDE

FRONT: 40 cm
CROWN/TOP: 65 cm
NAPE/NACKE/NAKKE: 60 cm

COLOURS/FÄRGER/FARVER

BLONDES: 738, Gold Blond
BROWNS: 6

COLOUR: 738






Unique fibres
Wigs & Hair Pieces
Creative possibilities

Unika/unikke fibre
 Peruker/Parykker &
 Hårersättningar/Hårdeler
 Kreative möjligheter/muligheter

CREATIVE | DALIDA



CREATIVE

BY SENTOO

STYLE OVERVIEW | STIL/MODELLOVERSIKT PAGE 76

Creative is a prestige range of unique products in human hair or the innovative VHair, Cyber Hair and other high-heat fibres. In the Creative collection you will find a contemporary selection of styles, that lend themselves perfectly to both cutting and styling. With a Creative wig or hairpiece, it is only your imagination that sets the limits to your styling.

Creative er en eksklusiv kolleksjon av unike produkter laget/fremstillet av ekte/ægte hår eller de innovative fibre VHair, Cyberhair og andre varmeresistente fibre – som både kan klippes og styles. Med en peruk/parykk eller hårersättning/hårdel fra Creative Collection er det bare/kun fantasien som setter/sætter grenser/grænser for frisyren.

Our Creative Symbols



VHair-Mix is a unique mix of fibres from Aderans. The main component is VHair, combined with a heat-resistant flexi fibre.

VHair Mix er en unik fiberblanding fra Aderans. Hovedkomponenten er VHair, kombinert med en varmeresistent flexi fibre.



100% Human Hair

LEARN MORE ABOUT THE FIBRES – PAGE 77



LUCA 15410



S M L

100% HUMAN HAIR

SIZE/STORLEK/STØRRELSE: 54 cm

HAIR LENGTH/HÅRLÆNGD/LÆNGDE

FRONT: 12 cm

CROWN/TOP: 15 cm

NAPE/NACKE/NAKKE: 6 cm



COLOUR: Honey Brown

COLOURS/FÄRGER/FARVER

BLONDES: Dark Ash Blond, Gold Blond Mix, Starlight Blond, Summer Blond

BROWNS: Brown Spice, Dark Chocolate, Honey Brown



DIAMOND 15414



S M L

100% HUMAN HAIR

SIZE/STORLEK/STØRRELSE: 52-53 cm

HAIR LENGTH/HÅRLÆNGD/LÆNGDE

FRONT: 35 cm

CROWN/TOP: 45 cm

NAPE/NACKE/NAKKE: 35 cm

COLOURS/FÄRGER/FARVER

BLONDES: Dark Ash Blond, Gold Blond Mix, Mid Blond, Starlight Blond

BROWNS: Brown Spice, Dark Chocolate, Espresso



COLOUR: Coloured



LORETTA

15411

S M L



100% HUMAN HAIR

SIZE/STORLEK/STØRRELSE: 54 cm

HAIR LENGTH/HÅRLÄNGD/LÆNGDE

FRONT: 12-15 cm

CROWN/TOP: 20-25 cm

NAPE/NACKE/NAKKE: 24 cm

COLOURS/FÄRGER/FARVER

BLONDES:

Dark Ash Blond, Gold Blond Mix,
Starlight Blond

BROWNS:

Brown Spice, Dark Chocolate,
Honey Brown

COLOUR: Dark Chocolate



AMBER

15413

S M L



100% HUMAN HAIR

SIZE/STORLEK/STØRRELSE: 52-53 cm

HAIR LENGTH/HÅRLÄNGD/LÆNGDE

FRONT: 30 cm

CROWN/TOP: 30 cm

NAPE/NACKE/NAKKE: 35 cm



COLOURS/FÄRGER/FARVER

BLONDES: Dark Ash Blond, Gold Blond Mix, Mid Blond Mix,
Starlight Blond

BROWNS: Brown Spice, Dark Chocolate

COLOUR: Coloured



16500 **JADE**

S M L

100% HUMAN HAIR

SIZE/STORLEK/STØRRELSE: 52-53 cm

HAIR LENGTH/HÅRLÆNGD/LÆNGDE

FRONT: 35 cm

CROWN/TOP: 35 cm

NAPE/NACKE/NAKKE: 40 cm

COLOURS/FÄRGER/FARVER

BLONDES:
20, 24

BROWNS:
4, 6, 8, 12, 14

REDS: 32, 34 | GREYS: 42

COLOUR: 34



15412 **DALIDA**

S M L

100% HUMAN HAIR

SIZE/STORLEK/STØRRELSE: 54-55 cm

HAIR LENGTH/HÅRLÆNGD/LÆNGDE

FRONT: 18 cm

CROWN/TOP: 32 cm

NAPE/NACKE/NAKKE: 34 cm

COLOURS/FÄRGER/FARVER

BLONDES:
Dark Ash Blond, Gold Blond Mix,
Starlight Blond

BROWNS:
Brown Spice, Dark Chocolate,
Honey Brown

COLOUR: Coloured



NEW



27018 **OCTAVIA**

S M L



VHAIR-MIX

SIZE/STORLEK/STØRRELSE:
54 cm

HAIR LENGTH/HÅRLÆNGD/LÆNGDE

FRONT: 8 cm

CROWN/TOP: 8 cm

NAPE/NACKE/NAKKE: 6 cm

COLOURS/FÄRGER/FARVER

Midnight (V4)

Walnut Melange (V6/10/14)

Smokey Melange (V34/36/39)

SOFT ROOTED:

Heartwood (V7/6-10SR)

Honey Maple (V6-37SR)

Maple Melange (V16/17/20SR)

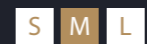
COLOUR: Smokey Melange



CREATIVE | OCTAVIA



PHEBE 27019



VHAIR-MIX

SIZE/STORLEK/STØRRELSE:

54 cm

HAIR LENGTH/HÅRLÆNGD/LÆNGDE

FRONT: 9 cm

CROWN/TOP: 17 cm

NAPE/NACKE/NAKKE: 6 cm

COLOURS/FÄRGER/FARVER

Midnight (V4)

Walnut Melange (V6/10/14)

Smokey Melange (V34/36/39)

SOFT ROOTED:

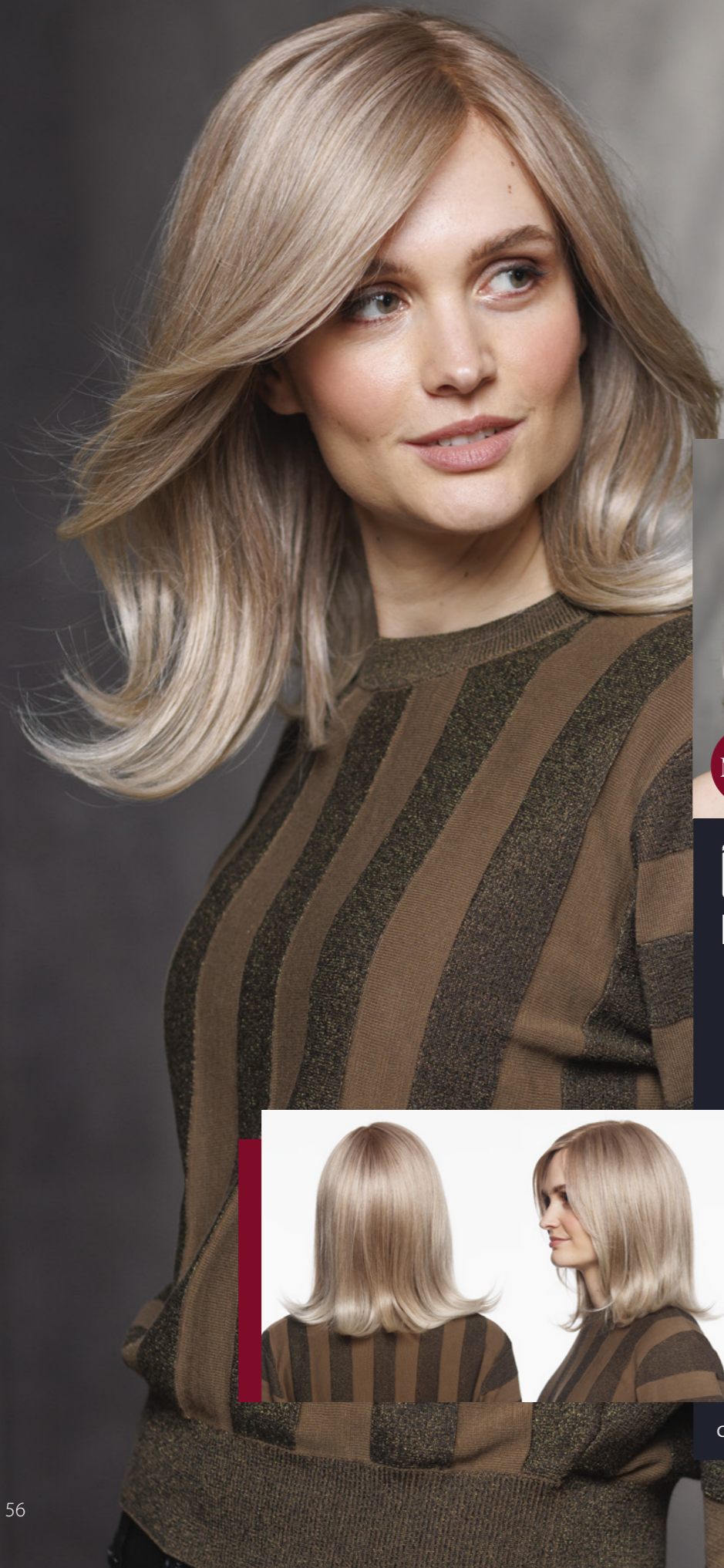
Heartwood (V7/6-10SR)

Honey Maple (V6-37SR)

Maple Melange (V16/17/20SR)

COLOUR: Walnut Melange





NEW



27020 **VIOLA**

S M L



VHAIR-MIX

SIZE/STORLEK/STØRRELSE:
54 cm

HAIR LENGTH/HÅRLÄNGD/LÆNGDE

FRONT: 14 cm

CROWN/TOP: 32 cm

NAPE/NACKE/NAKKE: 11.5 cm

COLOURS/FÄRGER/FARVER

Midnight (V4)

Walnut Melange (V6/10/14)

Smokey Melange (V34/36/39)

SOFT ROOTED:

Heartwood (V7/6-10SR)

Honey Maple (V6-37SR)

Maple Melange (V16/17/20SR)

COLOUR: Heartwood Soft Rooted



CREATIVE | VIOLA



CREATIVE | TITANIA



TITANIA 27021



S M L

VHAIR-MIX

SIZE/STORLEK/STØRRELSE:

54 cm

HAIR LENGTH/HÅRLÆNGD/LÆNGDE

FRONT: 18 cm

CROWN/TOP: 45 cm

NAPE/NACKE/NAKKE: 34 cm

COLOURS/FÄRGER/FARVER

Midnight (V4)

Walnut Melange (V6/10/14)

Smokey Melange (V34/36/39)

SOFT ROOTED:

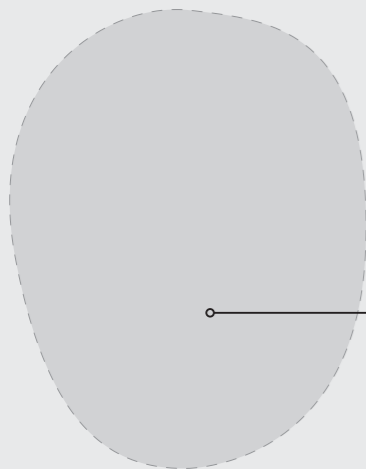
Heartwood (V7/6-10SR)

Honey Maple (V6-37SR)

Maple Melange (V16/17/20SR)

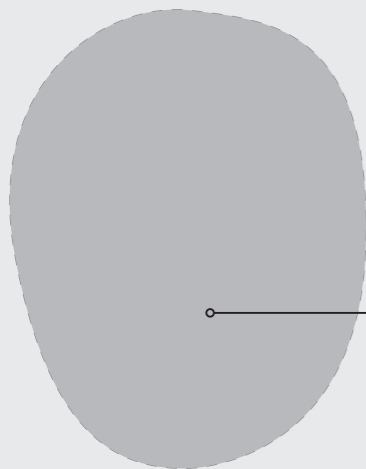
COLOUR: Midnight





THIN PU

NEW



PU

NEW

SKIN LIGHT 38607



100% HUMAN HAIR

SIZE/STORLEK/STØRRELSE: 25x20 cm

CONSTRUCTION/KONSTRUKTION/KONSTRUKSJON

PU

- ATTACHMENT/FASTSÄTTNING/ FASTGØRELSE: Full-bonding/Hellimning.
- CURLS/VÅGIGHET/KRØLLER: 25 mm.
- HAIR LENGTH/HÅRLÄNGD/LÆNGDE: 10-15 cm.
- DENSITY/TÄTHET/TETTHET/TÆTHED: light/lätt.
- PARTING/CROWN-VIRVEL/BENA-HVIRVEL/SKILNING: diffuse crown/diffus virvel mitt/hvirvel midt.

COLOURS/FÄRGER/FARVER

BLONDES: 17, 18

BROWNS: 1B, 1B10, 3, 5, 6, 7

GREYS: 520, 560, 620, 660, 720, 760, 1720, 1780

SKIN MEDIUM 38608



100% HUMAN HAIR

SIZE/STORLEK/STØRRELSE: 23x18 cm

CONSTRUCTION/KONSTRUKTION/KONSTRUKSJON

PU

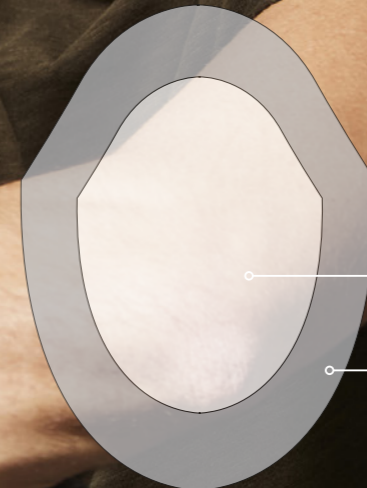
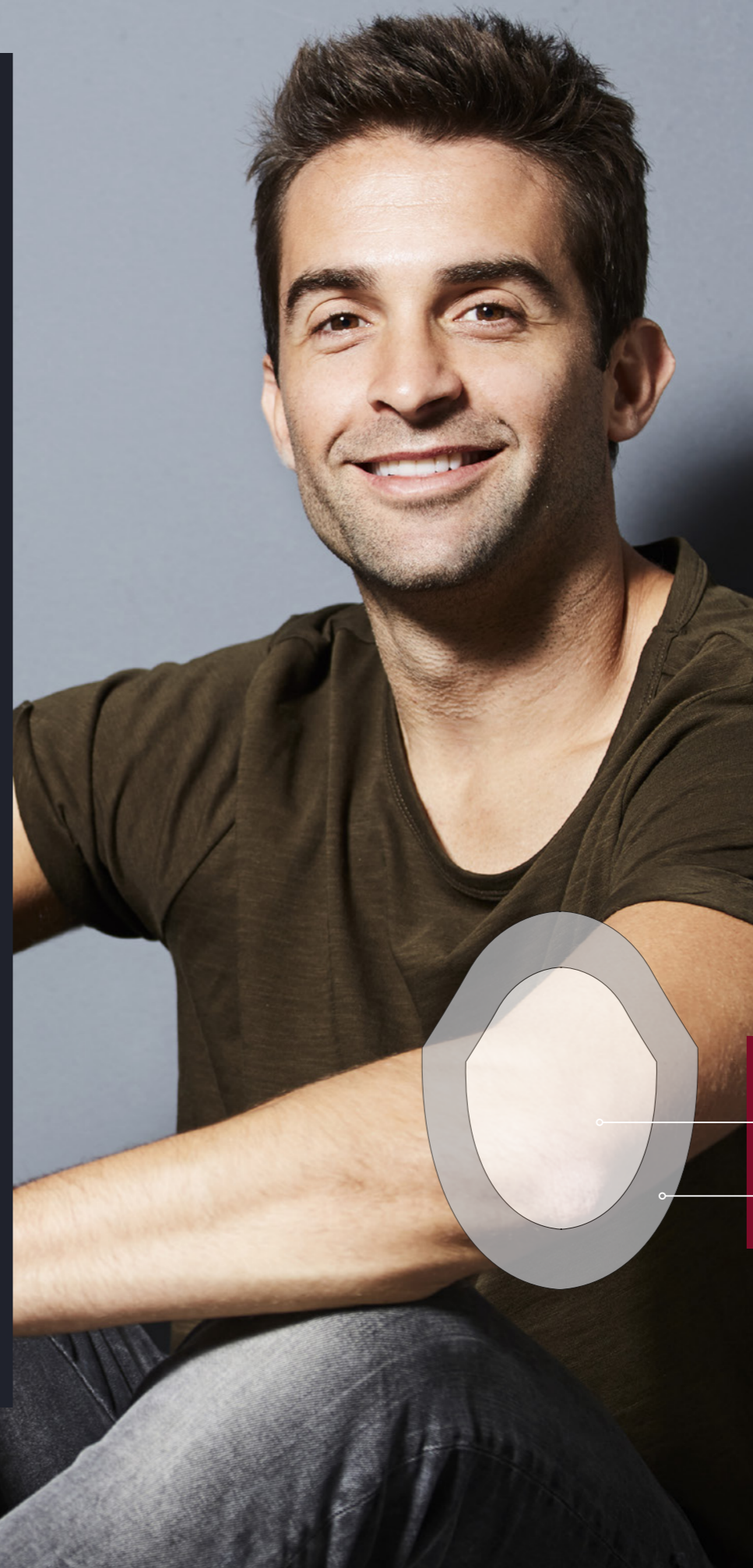
- ATTACHMENT/FASTSÄTTNING/ FASTGØRELSE: Full-bonding/Hellimning.
- CURLS/VÅGIGHET/KRØLLER: 30 mm.
- HAIR LENGTH/HÅRLÄNGD/LÆNGDE: 10-15 cm.
- DENSITY/TÄTHET/TETTHET/TÆTHED: normal.
- PARTING/CROWN-VIRVEL/BENA-HVIRVEL/SKILNING: diffuse crown/diffus virvel mitt/hvirvel midt.

COLOURS/FÄRGER/FARVER

BLONDES: 17, 18

BROWNS: 1B, 1B10, 3, 5, 6, 7

GREYS: 520, 560, 620, 660, 720, 760, 1720, 1780



NEW

TOPPER PU 38609



100% HUMAN HAIR

SIZE/STORLEK/STØRRELSE: 23x18 cm

CONSTRUCTION/KONSTRUKTION /KONSTRUKSJON

PU - MONO

- ATTACHMENT/FASTSÄTTNING/ FASTGØRELSE: PU-limning, tape, hairloc, weaving.
- CURLS/VÅGIGHET/KRØLLER: 25 mm.
- HAIR LENGTH/HÅRLÄNGD/LÆNGDE: 10-15 cm.
- DENSITY/TÄTHET/TETTHET/TÆTHED: normal.
- PARTING/CROWN - VIRVEL/BENA-HVIRVEL/SKILNING: diffuse crown/diffus virvel mitt/hvirvel midt.

COLOURS/FÄRGER/FARVER

BLONDES: 17, 18

BROWNS: 1B, 1B10, 3, 5, 6, 7

GREYS: 520, 560, 620, 660, 720, 760, 1720, 1780

MONOFILAMENT

PU



SYNTHETIC HAIR | HAIR CARE

- PREMIUM
- LOTUS
- ESSENTIAL



S SHAMPOO
50 ML | 80040
290 ML | 80045
No perfume, 290 ML | 80043



S BALSAM
50 ML | 80041
290 ML | 80044
No perfume, 290 ML | 80042



S CONDITIONER
250 ML | 80035

HUMAN HAIR, VHAIR & CYBERHAIR | HAIR CARE

- CREATIVE



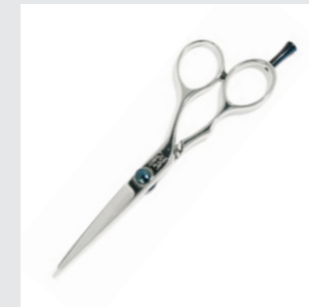
- 1| **X SHAMPOO**
250 ML | 80285
1000 ML | 80287
- 2| **X CONDITIONER**
250 ML | 80273
1000 ML | 80275

- 3| **X DEEP CONDITIONER**
250 ML | 80276
1000 ML | 80278
- 4| **X EVERYDAY CONDITIONER**
250 ML | 80279
- PURE COVER | V-HAIR**
150 ML | 80906

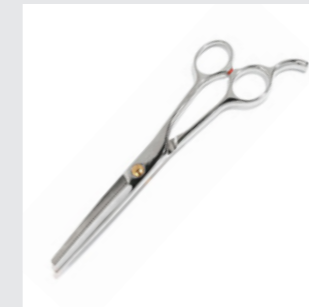
STYLING PRODUCTS

- 5| **X CONTROL SPRAY**
250 ML | 80281
- 6| **X STYLING GEL**
100 ML | 80284
- 7| **X STYLING CREAM**
100 ML | 80283

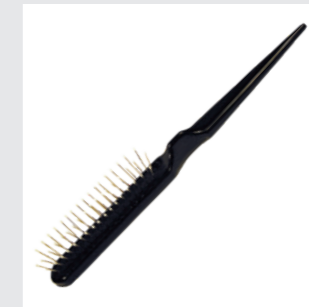
ACCESSORIES



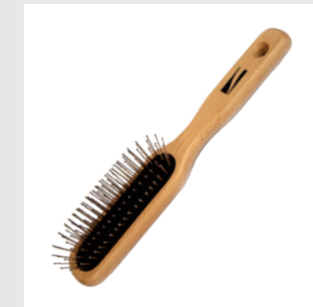
CYBERHAIR SCISSOR
SAX/SAKS
92495



CYBERHAIR EFFILER/EFFILERING
SCISSOR/SAX/SAKS
92496



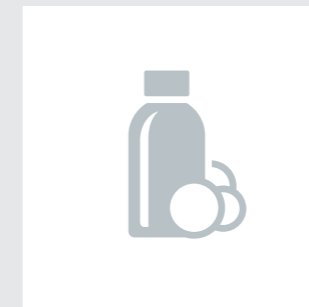
MINI BRUSH
BORSTE/BØRSTE
99060



CYBERHAIR BRUSH
BORSTE/BØRSTE
92014



PU SHEET/ARK
PU | 80163
PU/NPU | 80162



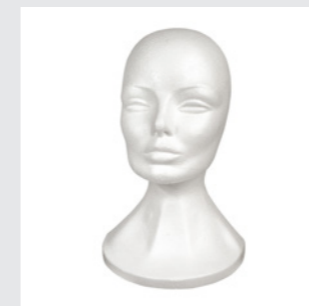
LIQUID PU
FLYTANDE/FLYDENDE PU
80128



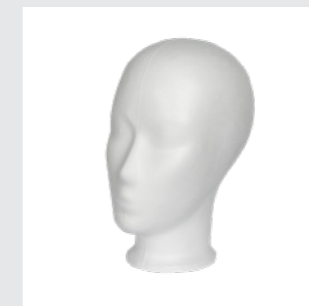
SILICONE BAND
92323



WIGTREE
MIDI | 92104
MAXI | 92259



POLYHEAD | MEDIUM
CELL-PLASTHUVUD/HOVED
92090



POLYHEAD | SMALL
CELL-PLASTHUVUD/HOVED
92091



POLYHEAD | MAN
CELL-PLASTHUVUD/HOVED
92141



TABLE STAND | WOOD
BORDSHÅLLARE/HOLDER I TRÅ/TRÆ
91053



STAND | SUCTION FOOT
STATIV - SUGPROPP
92261



WIG CAP | FINE MESHED
Colours: Beige, Mid Brown
92101

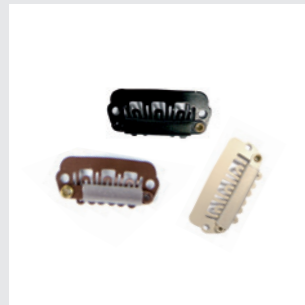


WIG CAP | WIDE MESHED, OPEN
Colours: Beige, Brown
92105



SILICONE HEADBAND
ANTI-SLIP, ONE SIZE
92262

HAIRLOCS



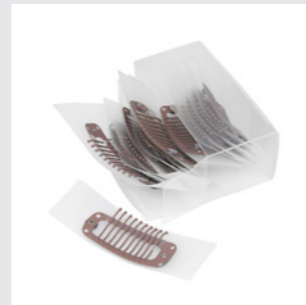
HAIRLOC - MINI
2 CM | 92026
Colours: Black, Brown, Beige



HAIRLOC - MIDI
2.8 CM | 92025
Colours: Black, Brown, Beige



HAIRLOC - MAXI
3.2 CM | 92024
Colours: Black, Brown, Beige, Silver



HAIRLOC PU
92204
Colours: Brown, Beige

TAPE

CML STRIPS | 90000

Double-sided transparent tape 72 pieces each 12 mm.
Dubbelhäftande/Dobbelthæftende/sidet, transparent/gennemsigtig tape 72 stk, 12 mm bitar/stykker.

TAPE | 90002

Double-sided fabric-like non-transparent tape on roll 30 mm x 3 m.
Dubbelhäftande/Dobbelthæftende/sidet, vävliknande/vevslignende/vævslignende, ikke transparent tape på rulle, 30 mm/3 m.

TOUPÉMATAPE | 90004

Double-sided transparent tape on roll 25 mm/5 m.
Dubbelhäftande/Dobbelthæftende/sidet, transparent/gennemsigtig tape på rulle, 25 mm/5 m.

ADMATTE STRIPS | 90053

Double-sided waterproof transparent tape 25 pieces each 2.5cm x 7cm / package.
Dubbelhäftande/Dobbelthæftende/sidet, vatten/vannfast, transparent/gennemsigtig tape 25 stk, 2,5 cm x 7 cm biter/stykker / pakke.

CLEANERS | HAIRPIECES

RENGÖRING/RENGØRING | HÅRERSÄTTNING/HÅRDELER

S CLEANER

290 ML | 80058 1000 ML | 80060

Cleans and removes tape and tape residues.
Rengjør og tar bort/fjerner tape og taperester.

SOLVENT

80 ML | 80047

Dissolves glue when permanently fixing toupée/hairpiece.
Løser opp/oppløser lim ved permanent feste/fastgørelse av hårsättning/hårdel.

BIO ENZYME | 80261

Absorbent and refreshing spray for skin/hair.
Absorberende/opfriskende spray til hud/hår.

TAPE BROWLINE

Double-sided plaster-like tape in 3 different designs.
Dubbelhäftande/Dobbelthæftende/sidet, plasterlignende tape. Tre ulike/forskjellige utførelser.

• CONTOUR G477 | 90016

• 3/4x9", STOR RULLE G425 | 90017

• 3/4x108", LITEN RULLE G401 | 90036

SENSITAK

Double-sided transparent protective tape with PU glue in 2 different designs.
Dubbelhäftande/Dobbelthæftende/sidet, transparent/gennemsigtig skydds/beskyttelsestape til PU-liming. Tre ulike/forskjellige utførelser.

• 3/4x108", 20 MM KOD 550 | 90047

• 25 MM | 90062

• CONTOUR, KOD 552 | 90063

LIQUID ADHESIVE | HAIRPIECES

LIM | HÅRERSÄTTNING

AQUA GLUE FIX

15 ML | 95030-15 125 ML | 95030-125

Full-bonding. To use both for the hairpiece/hair.
Helliming som brukes/bruges på hårsättning/hårdel og hår.

MEDICAL ADHESIVE | 90067

4 OZ

PU glue. Contact glue is glued to both the hairpiece/hair.
PU-liming. Kontaktlim limmas/påføres både på hårsättning/hårdel og hår.

EURO BOND TOUCH UP #7 | 90357

Consumer glue - reinforcement of gluing at the front. Glued to the skin.
Konsumentlim – forsterkning/forsterkning av/af liming i fronten. Limes på huden.

BRUSH/PENSEL PERMARITE | 90066

Application brush for glue.
Applikationspensel til/for lim.

CHRISTIAN FAYE | EYEBROW POWDER



EYEBROW COLOURS:

| 99516



THE PACKAGE CONTAINS:

1. EYEBROW POWDER
2. BRUSH/PENSEL
3. EYEBROW STENCIL/MALL/SKABELONER



**EYEBROW TESTER
PROFESSIONAL KIT**
99517



**EYEBROW DISPLAY
SALONG/SALON**
99518

EYELASHES/ÖGONFRANSAR/ØJENVIPPER



**EYELURE
PRE-GLUED**
SJÄLVHÄFTANDE/SELVHÆFTENDE
Black/Svart/Sort 031 | 92227-031
Black/Svart/Sort 070 | 92227-070



EYELASH T/B
Black/Svart/Sort | 92060
Brown/Brun | 92061



EYELASH DEMURE
Black/Svart/Sort | 92050



EYELASH ADHESIVE
ÖGONFRANSLIM/ ØJENVIPPELIM
92054

MANNEQUIN
SKYLTHUVUD/UDSTILLINGSHOVED
91067



FLOOR STAND
GOLVSTATIV/GULVSTATIV
91068



VOUX® HAIR BUILDING FIBRE



VOUX is a cosmetic product for men and women to cover light spots on the head. The result is full hair with natural hair structure.

Advantages of VOUX:

- Conceals thin hair immediately
- Made from 100 % natural cotton
- Quick and easy self-application

VOUX hårfiber – et kosmetikkprodukt for/til menn/mænd og kvinner som dekker/dækker tynt hår og flekkvist/pletvist hårtap/hårtap. Resultatet er fyldig hår med naturlig hårstruktur.

Fördelar/fordeler med VOUX:

- Döljer/skjuler tynt hår umiddelbart/med det samme
- Tillverkat/Laget/Fremstillet av/af 100 % naturlig bomull.
- Påføres snabbt/raskt/hurtigt og enkelt av/af brukeren/brukeren selv.

VOUX COLOURS/FÄRGER/FARVER:
82100

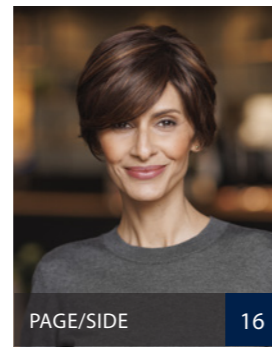


PREMIUM



BY SENTOO



lacefront - mono - hand-tied - wefted
 lacefront - mono - handknuten - träns
 lacefront - mono - håndknyttet - trense



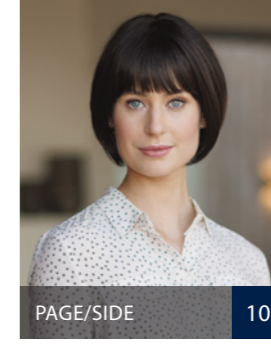
PAGE/SIDE 16

KINU 27133 
SIZE/STORLEK/STØRRELSE:  53-54 cm
HAIR LENGTH/HÅRLÆNGD/LÆNGDE
 FRONT: 14 cm
 CROWN/TOP: 15 cm
 NAPE/NACKE/NAKKE: 4 cm
COLOURS/FÄRGER/FARVER
 BLONDES: 134, 18/22, 20/22, 769, S770, A791G, A812G | BROWNS: 2/4, 4/6, 8-10/20G, S12/10, 768 | REDS: S637, SA811G | GREYS: 132, 38, S456, 56, 56/60, 60, 600





PAGE/SIDE 13

REIKA 27134 
SIZE/STORLEK/STØRRELSE:  53-54 cm
HAIR LENGTH/HÅRLÆNGD/LÆNGDE
 FRONT: 15 cm
 CROWN/TOP: 20 cm
 NAPE/NACKE/NAKKE: 10 cm
COLOURS/FÄRGER/FARVER
 BLONDES: 134, 769, S770, 812G | BROWNS: 2/4, 4/6, 8-10/20G, A761G | REDS: S637





PAGE/SIDE 10

TAMAKI 27135 
SIZE/STORLEK/STØRRELSE:  53-54 cm
HAIR LENGTH/HÅRLÆNGD/LÆNGDE
 FRONT: 10.5 cm
 CROWN/TOP: 18 cm
 NAPE/NACKE/NAKKE: 6 cm
COLOURS/FÄRGER/FARVER
 BLONDES: 134, 18/22, 20/22, 769, S770, A791G, A812G | BROWNS: 2/4, 4/6, 8-10/20G, S12/10, 768 | REDS: S637, SA811G | GREYS: 132, 38, S456, 56, 56/60, 60, 600





PAGE/SIDE 18

KYU 27111 
SIZE/STORLEK/STØRRELSE:  53-54 cm
HAIR LENGTH/HÅRLÆNGD/LÆNGDE
 FRONT: 10 cm
 CROWN/TOP: 10 cm
 NAPE/NACKE/NAKKE: 5 cm
COLOURS/FÄRGER/FARVER
 BLONDES: 134, 18/22, 20/22, 769, A791G | BROWNS: 1B, 2/4, 4/6, 8-10/20G, S12/10, 768 | REDS: S637 | GREYS: 135, 38, S456, 56, 56/60, 60, 600
PETITE 27137 | 51 CM
 134, 18/22, 20/22, 769, 2/4, 4/6, S12/10, S637, 38, 56/60, 60, 600



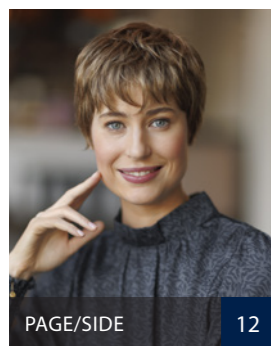
PAGE/SIDE 17

SAKURA LONG 27130 
SIZE/STORLEK/STØRRELSE:  53-54 cm
HAIR LENGTH/HÅRLÆNGD/LÆNGDE
 FRONT: 21 cm
 CROWN/TOP: 45 cm
 NAPE/NACKE/NAKKE: 45 cm
COLOURS/FÄRGER/FARVER
 BLONDES: 134, 20/22, 769, S770, A791G, 812G | BROWNS: 2/4, 4/6, 8-10/20G, 728T, A761G | REDS: 131, S637, SA811G



PAGE/SIDE 19

TANI 27124 
SIZE/STORLEK/STØRRELSE:  53-54 cm
HAIR LENGTH/HÅRLÆNGD/LÆNGDE
 FRONT: 9.5 cm
 CROWN/TOP: 9.5 cm
 NAPE/NACKE/NAKKE: 6 cm
COLOURS/FÄRGER/FARVER
 BLONDES: 134, 18/22, 769 | GREYS: 135, 38, S456, 56, 60, 600



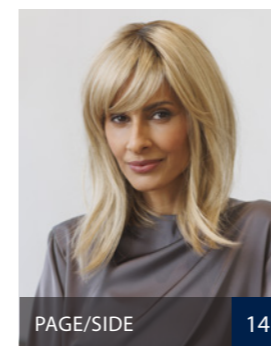
PAGE/SIDE 12

AYA 27125 
SIZE/STORLEK/STØRRELSE:  53-54 cm
HAIR LENGTH/HÅRLÆNGD/LÆNGDE
 FRONT: 6.5 cm
 CROWN/TOP: 5 cm
 NAPE/NACKE/NAKKE: 5 cm
COLOURS/FÄRGER/FARVER
 BLONDES: 134, 18/22, 20/22, 769, A791G | BROWNS: 2/4, 4/6, 8-10/20G, S12/10, 768 | REDS: S637 | GREYS: 135, 38, S456, 56, 56/60, 60, 600



PAGE/SIDE 8

MAIKO 27115 
SIZE/STORLEK/STØRRELSE:  53-54 cm
HAIR LENGTH/HÅRLÆNGD/LÆNGDE
 FRONT: 6 cm
 CROWN/TOP: 6 cm
 NAPE/NACKE/NAKKE: 6 cm
COLOURS/FÄRGER/FARVER
 BLONDES: 134, 18/22, 20/22, 769 | BROWNS: A8 | GREYS: 135, 38, 456, 56, 56/60, 60, 600





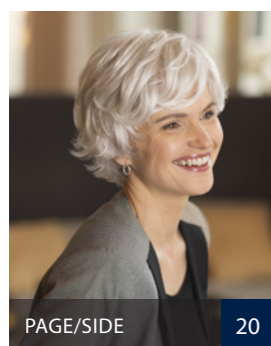
PAGE/SIDE 14

SANGO 27136 
SIZE/STORLEK/STØRRELSE:  53-54 cm
HAIR LENGTH/HÅRLÆNGD/LÆNGDE
 FRONT: 10 cm
 CROWN/TOP: 33 cm
 NAPE/NACKE/NAKKE: 17 cm
COLOURS/FÄRGER/FARVER
 BLONDES: 134, 20/22, 769, S770, 812G | BROWNS: 2/4, 4/6, 8-10/20G, 728T, A761G | REDS: 131, S637, SA811G



PAGE/SIDE 11

YAMA 27117 
SIZE/STORLEK/STØRRELSE:  53-54 cm
HAIR LENGTH/HÅRLÆNGD/LÆNGDE
 FRONT: 10 cm
 CROWN/TOP: 13 cm
 NAPE/NACKE/NAKKE: 10 cm
COLOURS/FÄRGER/FARVER
 BLONDES: 18/22, 20/22, 769, S770 | BROWNS: 2/4, 4/6, 8-10/20G, S12/10, 768 | REDS: S637 | GREYS: 38, 56, 56/60, 60, 600



PAGE/SIDE 20

KASUMI 27122 
SIZE/STORLEK/STØRRELSE:  53-54 cm
HAIR LENGTH/HÅRLÆNGD/LÆNGDE
 FRONT: 11.5 cm
 CROWN/TOP: 9.5 cm
 NAPE/NACKE/NAKKE: 6.5 cm
COLOURS/FÄRGER/FARVER
 BLONDES: 134, 18/22, 20/22, 769 | BROWNS: 4/6, 8-10/20G | GREYS: 135, 38, S456, 56, 56/60, 60, 600




PAGE/SIDE 9

MYU 27114 
SIZE/STORLEK/STØRRELSE:  53-54 cm
HAIR LENGTH/HÅRLÆNGD/LÆNGDE
 FRONT: 19 cm
 CROWN/TOP: 23 cm
 NAPE/NACKE/NAKKE: 19 cm
COLOURS/FÄRGER/FARVER
 BLONDES: 134, 769, S770, A791G, A812G | BROWNS: 2/4, 4/6, 8-10/20G, A761G | REDS: S637



PAGE/SIDE 21

SORA 27120 
SIZE/STORLEK/STØRRELSE:  53-54 cm
HAIR LENGTH/HÅRLÆNGD/LÆNGDE
 FRONT: 7.5 cm
 CROWN/TOP: 19 cm
 NAPE/NACKE/NAKKE: 7 cm
COLOURS/FÄRGER/FARVER
 BLONDES: 134, 20/22, 713, 769, S770, A791G, A812G | BROWNS: 1B, 2/4, 4/6, 8-10/20G, S12/10, 761G | REDS: S637, SA811G | GREYS: 38, 56, 56/60
PETITE 27138 | 51 CM
 134, 20/22, 769, 2/4, 4/6, 8-10/20G, A761G, A791G, A812G, SA811G, 38, 56/60

NEXT PAGE, COLOUR OVERVIEW >

PREMIUM

BY SENTOO

COLOUR STYLE	BLONDES							
	134	18/22	20/22	713	769	5770	791G	812G
AYA	•	•	•		•		•	
KASUMI	•	•	•		•			
KINU	•	•	•		•	•	•	•
KYU	•	•	•		•		•	
KYU - S	•	•	•		•			
MAIKO	•	•	•		•			
MYU	•				•	•	•	•
REIKA	•				•	•		•
SAKURA LONG	•		•		•	•	•	•
SANGO	•		•		•	•		•
SORA	•		•	•	•	•	•	•
SORA - S	•		•		•		•	•
TAMAKI	•	•	•		•	•	•	•
TANI	•	•			•			
YAMA		•	•		•	•		

COLOUR STYLE	BROWNS								
	1B	2/4	4/6	8	512/10	728T	A761G	768	8/10-20G
AYA		•	•		•			•	•
KASUMI			•						•
KINU		•	•		•			•	•
KYU	•	•	•		•			•	•
KYU - S		•	•		•				
MAIKO				•					
MYU		•	•				•		•
REIKA		•	•				•		•
SAKURA LONG		•	•			•	•		•
SANGO		•	•			•	•		•
SORA	•	•	•		•		•		•
SORA - S		•	•				•		•
TAMAKI		•	•		•			•	•
TANI									
YAMA		•	•		•			•	•

COLOUR STYLE	REDS		
	131	5637	SA811G
AYA		•	
KASUMI			
KINU		•	•
KYU		•	
KYU - S		•	
MAIKO			
MYU		•	
REIKA		•	
SAKURA LONG	•	•	•
SANGO	•	•	•
SORA		•	•
SORA - S			•
TAMAKI		•	•
TANI			
YAMA		•	

COLOUR STYLE	GREYS							
	132	135	38	5456	56	56/60	60	600
AYA		•	•	•	•	•	•	•
KASUMI		•	•	•	•	•	•	•
KINU	•		•	•	•	•	•	•
KYU		•	•	•	•	•	•	•
KYU - S			•			•	•	•
MAIKO		•	•	•	•	•	•	•
MYU								
REIKA								
SAKURA LONG								
SANGO								
SORA			•		•	•		
SORA - S			•			•		
TAMAKI	•		•	•	•	•	•	•
TANI		•	•	•	•		•	•
YAMA			•		•	•	•	•

LOTUS

BY SENTOO



lacefront - mono - wefted
lacefront - mono - tråns/trense



lacefront - hand-tied - weft on net
lacefront - handknuten - tråns på nät
lacefront - håndknyttet - trense på net



lacefront - mono - hand-tied - weft on net
lacefront - mono - handknuten - tråns på nät
lacefront - mono - håndknyttet - trense på net



extended lacefront-mono-hand-tied - weft on net
extended lacefront-mono-handknuten - tråns på nät
extended lacefront-mono-håndknyttet - trense på net



LILY



PEONY



anti-slip



anti-slip



anti-slip



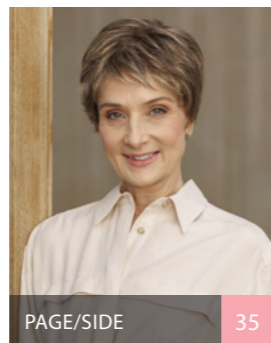
PAGE/SIDE 26

Bluebell 27007

SIZE/STORLEK/STØRRELSE: 53 cm S M L

HAIR LENGTH/HÅRLÄNGD/LÆNGDE
FRONT: 38 cm | CROWN/TOP: 48 cm
NAPE/NACKE/NAKKE: 33 cm

COLOURS/FÄRGER/FARVER
MELANGE: Cherry (9/12/18), Maple (16/17/20), Midnight (4), Walnut (6/10/14), White Oak (18/22) | ROOTED: Aspen Melange (8/22), Birch (12/14), Cherry (70/78), Light Oak Melange (75/89/92), Red Chestnut (4/33), Sycamore Melange (6/70/23), Zebrawood (2/60V) | GREYS: Driftwood (38), Iced Melange (38/42/60), Silver (62)



PAGE/SIDE 35

Dahlia 27005

SIZE/STORLEK/STØRRELSE: 54 cm S M L

HAIR LENGTH/HÅRLÄNGD/LÆNGDE
FRONT: 8 cm | CROWN/TOP: 10 cm
NAPE/NACKE/NAKKE: 5 cm

COLOURS/FÄRGER/FARVER
MELANGE: Cherry (9/12/18), Maple (16/17/20), Midnight (4), Sandalwood (8/11/24), Walnut (6/10/14), White Oak (18/22) | ROOTED: Aspen Melange (8/22), Birch (12/14), Cherry (70/78), Dark Sand (81/85/87/91), Light Oak Melange (75/89/92), Red Chestnut (4/33), Sandalwood (72/73/79), Zebrawood (2/60V) | GREYS: Iced Melange (38/42/60), Silver (62), Smokey Melange (34/36/39)



PAGE/SIDE 37

Daisy 27012

SIZE/STORLEK/STØRRELSE: 54 cm S M L

HAIR LENGTH/HÅRLÄNGD/LÆNGDE
FRONT: 6.5 cm | CROWN/TOP: 6 cm
NAPE/NACKE/NAKKE: 3 cm

COLOURS/FÄRGER/FARVER
MELANGE: Maple (16/17/20), Midnight (4), Sandalwood (8/11/24), Walnut (6/10/14) | ROOTED: Aspen Melange (8/22), Birch (12/14), Light Oak Melange (75/89/92), Red Chestnut (4/33), Tobacco (71/74/76), Zebrawood (2/60V) | GREYS: Iced Melange (38/42/60), Smokey Melange (34/36/39)



PAGE/SIDE 29

Fiore 27013

SIZE/STORLEK/STØRRELSE: 55-56 cm S M L

HAIR LENGTH/HÅRLÄNGD/LÆNGDE
FRONT: 7 cm | CROWN/TOP: 11 cm
NAPE/NACKE/NAKKE: 3 cm

COLOURS/FÄRGER/FARVER
MELANGE: Cherry (9/12/18), Maple (16/17/20), Midnight (4), Sandalwood (8/11/24), Walnut (6/10/14), White Oak (18/22) | ROOTED: Aspen Melange (8/22), Birch (12/14), Cherry (70/78), Dark Sand (81/85/87/91), Light Oak Melange (75/89/92), Red Chestnut (4/33), Sandalwood (72/73/79), Zebrawood (2/60V) | GREYS: Iced Melange (38/42/60), Silver (62), Smokey Melange (34/36/39)



PAGE/SIDE 34

Fuchsia 27016

SIZE/STORLEK/STØRRELSE: 56 cm S M L

HAIR LENGTH/HÅRLÄNGD/LÆNGDE
FRONT: 30 cm | CROWN/TOP: 24 cm
NAPE/NACKE/NAKKE: 9 cm

COLOURS/FÄRGER/FARVER
MELANGE: Maple (16/17/20), Midnight (4), Walnut (6/10/14), White Oak (18/22) | ROOTED: Aspen Melange (8/22), Birch (12/14), Cherry (70/78), Light Oak Melange (75/89/92), Purple Heart (4/74), Red Chestnut (4/33), Sandalwood (72/73/79), Sycamore Melange (6/70/23) | GREYS: Iced Melange (38/42/60), Silver (62), Sugar Berry (60/600MP)



PAGE/SIDE 24

Gardenia 27015

SIZE/STORLEK/STØRRELSE: 54 cm S M L

HAIR LENGTH/HÅRLÄNGD/LÆNGDE
FRONT: 14 cm | CROWN/TOP: 16 cm
NAPE/NACKE/NAKKE: 3 cm

COLOURS/FÄRGER/FARVER
MELANGE: Cherry (9/12/18), Maple (16/17/20), Midnight (4), Sandalwood (8/11/24), Walnut (6/10/14), White Oak (18/22) | ROOTED: Aspen Melange (8/22), Birch (12/14), Cherry (70/78), Dark Sand (81/85/87/91), Light Oak Melange (75/89/92), Purple Heart (4/74), Red Chestnut (4/33), Sandalwood (72/73/79) | GREYS: Iced Melange (38/42/60), Silver (62), Smokey Melange (34/36/39), Sugar Berry (60/600MP)



PAGE/SIDE 25

Hazel 27006

SIZE/STORLEK/STØRRELSE: 53 cm S M L

HAIR LENGTH/HÅRLÄNGD/LÆNGDE
FRONT: 13 cm | CROWN/TOP: 25 cm
NAPE/NACKE/NAKKE: 15 cm

COLOURS/FÄRGER/FARVER
MELANGE: Cherry (9/12/18), Maple (16/17/20), Midnight (4), Sandalwood (8/11/24), Walnut (6/10/14), White Oak (18/22) | ROOTED: Aspen Melange (8/22), Birch (12/14), Cherry (70/78), Dark Sand (81/85/87/91), Light Oak Melange (75/89/92), Sandalwood (72/73/79), Sycamore Melange (6/70/23) | GREYS: Iced Melange (38/42/60), Smokey Melange (34/36/39)



PAGE/SIDE 28

Honesty 27017

SIZE/STORLEK/STØRRELSE: 56 cm S M L

HAIR LENGTH/HÅRLÄNGD/LÆNGDE
FRONT: 32 cm | CROWN/TOP: 44 cm
NAPE/NACKE/NAKKE: 40 cm

COLOURS/FÄRGER/FARVER
MELANGE: Maple (16/17/20), Midnight (4), Walnut (6/10/14), White Oak (18/22) | ROOTED: Aspen Melange (8/22), Birch (12/14), Cherry (70/78), Light Oak Melange (75/89/92), Purple Heart (4/74), Red Chestnut (4/33), Sandalwood (72/73/79), Sycamore Melange (6/70/23) | GREYS: Iced Melange (38/42/60), Silver (62), Sugar Berry (60/600MP)



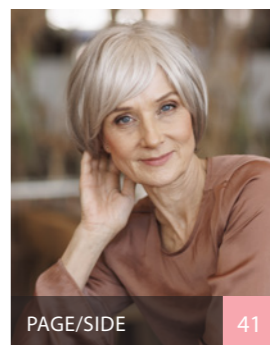
PAGE/SIDE 33

Iris 27010

SIZE/STORLEK/STØRRELSE: 53 cm S M L

HAIR LENGTH/HÅRLÄNGD/LÆNGDE
FRONT: 20 cm | CROWN/TOP: 22 cm
NAPE/NACKE/NAKKE: 6.5 cm

COLOURS/FÄRGER/FARVER
MELANGE: Aspen (134), Ember (2/32), Maple (16/17/20), Midnight (4), Walnut (6/10/14) | ROOTED: Light Oak Melange (75/89/92), Tobacco (71/74/76), Zebrawood (2/60V) | GREYS: Iced Melange (38/42/60), Sugar Berry (60/600MP)



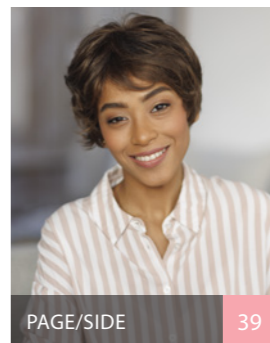
PAGE/SIDE 41

Lily 27001

SIZE/STORLEK/STØRRELSE: 53 cm S M L

HAIR LENGTH/HÅRLÄNGD/LÆNGDE
FRONT: 13 cm | CROWN/TOP: 17 cm
NAPE/NACKE/NAKKE: 10 cm

COLOURS/FÄRGER/FARVER
MELANGE: Cherry (9/12/18), Ember (2/32), Maple (16/17/20), Midnight (4), Sandalwood (8/11/24), Walnut (6/10/14), White Oak (18/22) | ROOTED: Cherry (70/78), Dark Sand (81/85/87/91), Light Oak Melange (75/89/92), Sandalwood (72/73/79) | GREYS: Iced Melange (38/42/60), Smokey Melange (34/36/39)



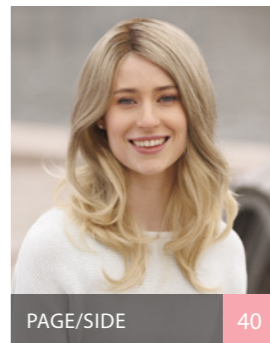
PAGE/SIDE 39

Peony 27003

SIZE/STORLEK/STØRRELSE: 53 cm S M L

HAIR LENGTH/HÅRLÄNGD/LÆNGDE
FRONT: 11 cm | CROWN/TOP: 7 cm
NAPE/NACKE/NAKKE: 5 cm

COLOURS/FÄRGER/FARVER
MELANGE: Aspen (134), Cherry (9/12/18), Sandalwood (8/11/24), Walnut (6/10/14), White Oak (18/22) | ROOTED: Dark Sand (81/85/87/91), Light Oak Melange (75/89/92), Cherry (70/78), Tobacco (71/74/76) | GREYS: Iced Melange (38/42/60), Smokey Melange (34/36/39)



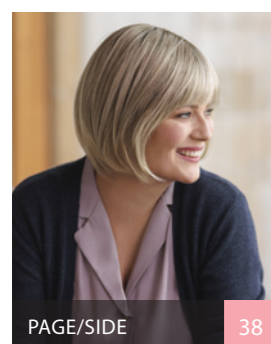
PAGE/SIDE 40

Poppy 27008

SIZE/STORLEK/STØRRELSE: 53 cm S M L

HAIR LENGTH/HÅRLÄNGD/LÆNGDE
FRONT: 32 cm | CROWN/TOP: 36 cm
NAPE/NACKE/NAKKE: 36 cm

COLOURS/FÄRGER/FARVER
MELANGE: Maple (16/17/20), Midnight (4), Walnut (6/10/14), White Oak (18/22) | ROOTED: Cherry (70/78), Light Oak Melange (75/89/92), Red Chestnut (4/33), Sandalwood (72/73/79), Sycamore Melange (6/70/23) | GREYS: Iced Melange (38/42/60), Silver (62), Sugar Berry (60/600MP)



PAGE/SIDE 38

Aster 27011

SIZE/STORLEK/STØRRELSE: 53 cm S M L

HAIR LENGTH/HÅRLÄNGD/LÆNGDE
FRONT: 10 cm | CROWN/TOP: 26 cm
NAPE/NACKE/NAKKE: 10 cm

COLOURS/FÄRGER/FARVER
MELANGE: Cherry (9/12/18), Maple (16/17/20), Sandalwood (8/11/24), Walnut (6/10/14), White Oak (18/22) | ROOTED: Light Oak Melange (75/89/92), Red Chestnut (4/33), Sycamore Melange (6/70/23) | GREYS: Driftwood (38), Iced Melange (38/42/60), Silver (62)



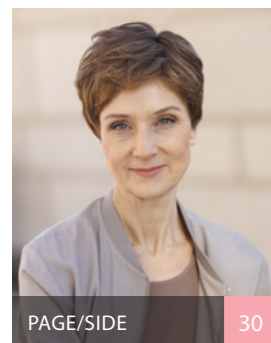
PAGE/SIDE 27

Primrose 27014

SIZE/STORLEK/STØRRELSE: 54 cm S M L

HAIR LENGTH/HÅRLÄNGD/LÆNGDE
FRONT: 16 cm | CROWN/TOP: 10 cm
NAPE/NACKE/NAKKE: 3 cm

COLOURS/FÄRGER/FARVER
MELANGE: Cherry (9/12/18), Maple (16/17/20), Midnight (4), Sandalwood (8/11/24), Walnut (6/10/14), White Oak (18/22) | ROOTED: Aspen Melange (8/22), Birch (12/14), Cherry (70/78), Dark Sand (81/85/87/91), Light Oak Melange (75/89/92), Sandalwood (72/73/79), Sycamore Melange (6/70/23) | GREYS: Iced Melange (38/42/60), Smokey Melange (34/36/39)



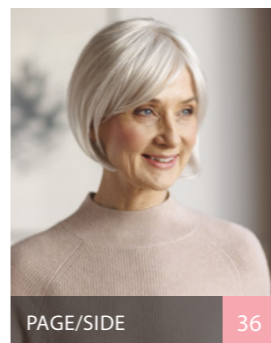
PAGE/SIDE 30

Blossom 27004

SIZE/STORLEK/STØRRELSE: 55 cm S M L

HAIR LENGTH/HÅRLÄNGD/LÆNGDE
FRONT: 5 cm | CROWN/TOP: 10 cm
NAPE/NACKE/NAKKE: 5 cm

COLOURS/FÄRGER/FARVER
MELANGE: Aspen (134), Cherry (9/12/18), Midnight (4), Sandalwood (8/11/24), Walnut (6/10/14), White Oak (18/22) | ROOTED: Aspen Melange (8/22), Birch (12/14), Dark Sand (81/85/87/91), Light Oak Melange (75/89/92) | GREYS: Hickory (4565), Iced Melange (38/42/60), Silver (62), Smokey Melange (34/36/39)



PAGE/SIDE 36

Jasmine 27002

SIZE/STORLEK/STØRRELSE: 51.5 cm S M L

HAIR LENGTH/HÅRLÄNGD/LÆNGDE
FRONT: 13 cm | CROWN/TOP: 22 cm
NAPE/NACKE/NAKKE: 6 cm

COLOURS/FÄRGER/FARVER
MELANGE: Cherry (9/12/18), Maple (16/17/20), Midnight (4), Sandalwood (8/11/24), Walnut (6/10/14), White Oak (18/22) | ROOTED: Aspen Melange (8/22), Birch (12/14), Cherry (70/78), Dark Sand (81/85/87/91), Light Oak Melange (75/89/92), Red Chestnut (4/33), Sandalwood (72/73/79) | GREYS: Iced Melange (38/42/60), Silver (62), Smokey Melange (34/36/39), Sugar Berry (60/600MP)



PAGE/SIDE 31

Tulip 27009

SIZE/STORLEK/STØRRELSE: 53 cm S M L

HAIR LENGTH/HÅRLÄNGD/LÆNGDE
FRONT: 9 cm | CROWN/TOP: 12.5 cm
NAPE/NACKE/NAKKE: 8 cm

COLOURS/FÄRGER/FARVER
MELANGE: Maple (16/17/20), Midnight (4), Sandalwood (8/11/24), Walnut (6/10/14) | ROOTED: Light Oak Melange (75/89/92), Red Chestnut (4/33), Tobacco (71/74/76), Zebrawood (2/60V) | GREYS: Iced Melange (38/42/60), Smokey Melange (34/36/39)



COLOUR STYLE	MELANGE								ROOTED										
	Aspen – 134	Ember – 2/32	Cherry Melange – 9/12/18	Maple Melange – 16/17/20	Midnight – 4	Walnut Melange – 6/10/14	White Oak – 18/22	Sandalwood Melange – 8/11/24	NEW Aspen Melange Rooted – 8/22	NEW Birch Rooted – 12/14	Cherry Rooted – 70/78	Dark Sand Rooted – 81/85/87/91	Light Oak Melange Rooted – 75/89/92	NEW Purple Heart Rooted – 4/74	Red Chestnut Rooted – 4/33	Sycamore Melange Rooted – 6/70/23	Sandalwood Rooted – 72/73/79	Tobacco Rooted – 71/74/76	ZebraWood Rooted – 2/60V
ASTER			•	•		•	•	•				•		•	•				
BLOSSOM	•		•		•	•	•	•	•		•	•							
BLUEBELL			•	•	•	•	•	•	•	•		•		•	•				•
DAHLIA			•	•	•	•	•	•	•	•	•	•		•			•		•
DAISY				•	•	•	•	•	•			•		•			•		•
FIORE			•	•	•	•	•	•	•	•	•	•		•			•		•
FUCHSIA				•	•	•	•	•	•	•		•	•	•	•	•			•
GARDENIA			•	•	•	•	•	•	•	•	•	•	•	•		•			•
HAZEL			•	•	•	•	•	•	•	•	•	•			•	•			
HONESTY				•	•	•	•		•	•	•	•	•	•	•	•			•
IRIS	•	•		•	•	•						•					•		•
JASMINE			•	•	•	•	•	•	•	•	•	•		•			•		•
LILY		•	•	•	•	•	•			•	•	•				•			
PEONY	•		•			•	•	•		•	•	•					•		
POPPY				•	•	•	•			•		•		•	•	•			
PRIMROSE			•	•	•	•	•	•	•	•	•	•			•	•			
TULIP				•	•	•	•					•		•			•		•

COLOUR STYLE	GREYS					
	Silver – 62	Iced Melange – 38/42/60	Smokey Melange – 34/36/39	Dirftwood – 38	Hickory – 456S	Sugar Berry – 60/600MP
ASTER	•	•		•		
BLOSSOM	•	•	•		•	
BLUEBELL	•	•		•		
DAHLIA	•	•	•			
DAISY		•	•			
FIORE	•	•	•			
FUCHSIA	•	•				•
GARDENIA	•	•	•			•
HAZEL		•	•			
HONESTY	•	•				•
IRIS		•				•
JASMINE	•	•	•			•
LILY		•	•			
PEONY		•	•			
POPPY	•	•				•
PRIMROSE		•	•			
TULIP		•	•			



CREATIVE

BY SENTOO



double mono top - wefted
dubbel mono top - tråns/trense



lacefront - mono top* - hand-tied
lacefront - mono top* - handknuten
lacefront - mono top* - håndknyttet



* DIAMOND AND AMBER: DOUBLE MONO TOP



lacefront - mono - hand-tied - anti slip
lacefront - mono - handknuten - anti slip
lacefront - mono - håndknyttet - anti slip



AMBER 15413

100% HUMAN HAIR



SIZE/STORLEK/STØRRELSE:
52-53 cm

HAIR LENGTH/HÅRLÆNGD/LÆNGDE
FRONT: 30 cm

CROWN/TOP: 30 cm

NAPE/NACKE/NAKKE: 35 cm

COLOURS/FÄRGER/FARVER

BLONDES: Dark Ash Blond, Gold Blond Mix,
Mid Blond Mix, Starlight Blond | BROWNS:
Brown Spice, Dark Chocolate

PAGE/SIDE: 49



DALIDA 15412

100% HUMAN HAIR



SIZE/STORLEK/STØRRELSE:
54-55 cm

HAIR LENGTH/HÅRLÆNGD/LÆNGDE
FRONT: 18 cm

CROWN/TOP: 32 cm

NAPE/NACKE/NAKKE: 34 cm

COLOURS/FÄRGER/FARVER

BLONDES: Dark Ash Blond, Gold Blond Mix,
Starlight Blond | BROWNS: Brown Spice,
Dark Chocolate, Honey Brown

PAGE/SIDE: 51



DIAMOND 15414

100% HUMAN HAIR



SIZE/STORLEK/STØRRELSE:
52-53 cm

HAIR LENGTH/HÅRLÆNGD/LÆNGDE
FRONT: 35 cm

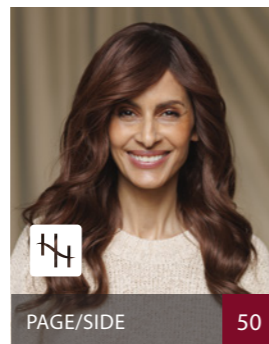
CROWN/TOP: 45 cm

NAPE/NACKE/NAKKE: 35 cm

COLOURS/FÄRGER/FARVER

BLONDES: Dark Ash Blond, Gold Blond Mix,
Mid Blond Mix, Starlight Blond | BROWNS: Brown
Spice, Dark Chocolate, Espresso

PAGE/SIDE: 47



JADE 16500

100% HUMAN HAIR



SIZE/STORLEK/STØRRELSE:
52-53 cm

HAIR LENGTH/HÅRLÆNGD/LÆNGDE
FRONT: 35 cm

CROWN/TOP: 35 cm

NAPE/NACKE/NAKKE: 40 cm

COLOURS/FÄRGER/FARVER

BLONDES: 20, 24 | BROWNS: 4, 6, 8, 12, 14 |
REDS: 32, 34 | GREYS: 42

PAGE/SIDE: 50



LORETTA 15411

100% HUMAN HAIR



SIZE/STORLEK/STØRRELSE:
54 cm

HAIR LENGTH/HÅRLÆNGD/LÆNGDE
FRONT: 12-15 cm

CROWN/TOP: 20-25 cm

NAPE/NACKE/NAKKE: 24 cm

COLOURS/FÄRGER/FARVER

BLONDES: Dark Ash Blond, Gold Blond Mix,
Starlight Blond | BROWNS: Brown Spice,
Dark Chocolate, Honey Brown

PAGE/SIDE: 48



LUCA 15410

100% HUMAN HAIR



SIZE/STORLEK/STØRRELSE:
54 cm

HAIR LENGTH/HÅRLÆNGD/LÆNGDE
FRONT: 12 cm

CROWN/TOP: 15 cm

NAPE/NACKE/NAKKE: 6 cm

COLOURS/FÄRGER/FARVER

BLONDES: Dark Ash Blond, Gold Blond Mix,
Starlight Blond, Summer Blond
| BROWNS: Brown Spice, Dark Chocolate,
Honey Brown

PAGE/SIDE: 46



lacefront - mono top - hand-tied - anti slip
lacefront - mono top - handknuten - anti slip
lacefront - mono top - håndknyttet - anti slip

Our beautiful Creative wigs Octavia, Phebe, Viola and Titania are made of the unique VHair Mix fibre – which are high resistant and designed to be styled or cut, to best enhance the fibre.

Våre/Vores vakre/smukke parykker fra Creative Collection, Octavia, Phebe, Viola og Titania, er laget/fremstillet av den unike fiberen VHair Mix – som er varmeresistent og bør styles og klippes for å/at fremheve/fremhæve fiberen optimalt.



VHAIR MIX

VHair Mix is a unique blend of fibres formulated by Aderans. The main component is VHair, a durable, lightweight and colour-fast fibre. Combined with a heat-resistant flexi fibre, this fibre not only allows for a super natural look but also allows the wearer to heat style for a perfectly flawless finish.

VHair products are only available from stockists upon their successful completion of the Aderans VHair Educational Programme.

VHair Mix er en unik fiberblanding utviklet/udviklet av Aderans. Hovedkomponenten er VHair, en slitesterk/slidstærk, lett og fargeekte/farveægte fiber. Denne fiberen er kombinert med varmeresistent flexi fibre, som både gir/giver et naturlig utseende/look og kan varmestyles til ønsket frisyre.

VHair-produktene er kun tilgjengelige/tilgængelige fra forhandler etter/etter fullført/afsluttet Aderans VHair Educational Programme.



OCTAVIA 27018

100% VHAIR-MIX



SIZE/STORLEK/STØRRELSE: 54 cm

HAIR LENGTH/HÅRLÆNGD/LÆNGDE
FRONT: 8 cm

CROWN/TOP: 8 cm

NAPE/NACKE/NAKKE: 6 cm

COLOURS/FÄRGER/FARVER

Midnight (V4), Walnut Melange (V6/10/14),
Smokey Melange (V34/36/39) | SOFT ROOTED:
Heartwood (V7/6-10SR), Honey Maple (V6-37SR),
Maple Melange (V16/17/20SR)

PAGE/SIDE: 52



PHEBE 27019

100% VHAIR-MIX



SIZE/STORLEK/STØRRELSE: 54 cm

HAIR LENGTH/HÅRLÆNGD/LÆNGDE
FRONT: 9 cm

CROWN/TOP: 17 cm

NAPE/NACKE/NAKKE: 6 cm

COLOURS/FÄRGER/FARVER

Midnight (V4), Walnut Melange (V6/10/14),
Smokey Melange (V34/36/39) | SOFT ROOTED:
Heartwood (V7/6-10SR), Honey Maple (V6-37SR),
Maple Melange (V16/17/20SR)

PAGE/SIDE: 54



VIOLA 27020

100% VHAIR-MIX



SIZE/STORLEK/STØRRELSE: 54 cm

HAIR LENGTH/HÅRLÆNGD/LÆNGDE
FRONT: 14 cm

CROWN/TOP: 32 cm

NAPE/NACKE/NAKKE: 11.5 cm

COLOURS/FÄRGER/FARVER

Midnight (V4), Walnut Melange (V6/10/14),
Smokey Melange (V34/36/39) | SOFT ROOTED:
Heartwood (V7/6-10SR), Honey Maple (V6-37SR),
Maple Melange (V16/17/20SR)

PAGE/SIDE: 56



TITANIA 27021

100% VHAIR-MIX



SIZE/STORLEK/STØRRELSE: 54 cm

HAIR LENGTH/HÅRLÆNGD/LÆNGDE
FRONT: 18 cm

CROWN/TOP: 45 cm

NAPE/NACKE/NAKKE: 34 cm

COLOURS/FÄRGER/FARVER

Midnight (V4), Walnut Melange (V6/10/14),
Smokey Melange (V34/36/39) | SOFT ROOTED:
Heartwood (V7/6-10SR), Honey Maple (V6-37SR),
Maple Melange (V16/17/20SR)

PAGE/SIDE: 58

PREMIUM
BY SENTOO

BLONDES



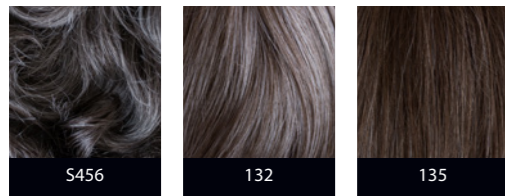
BROWNS



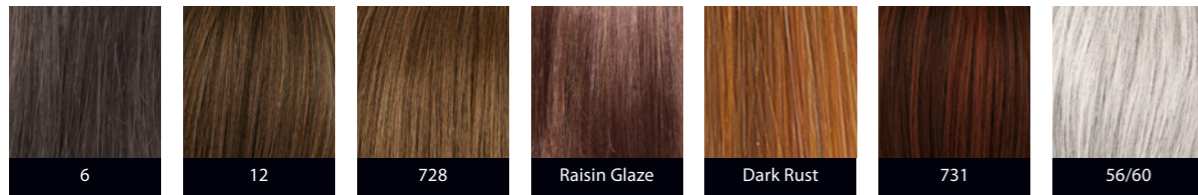
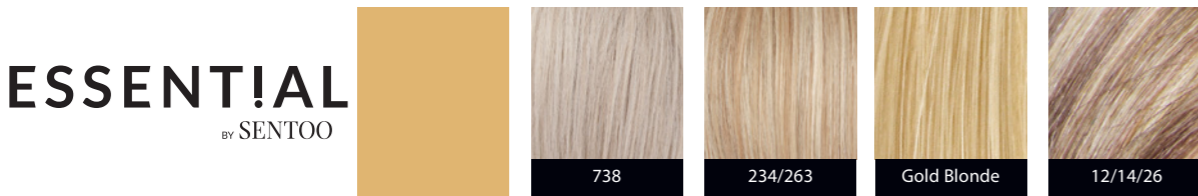
REDS



GREYS

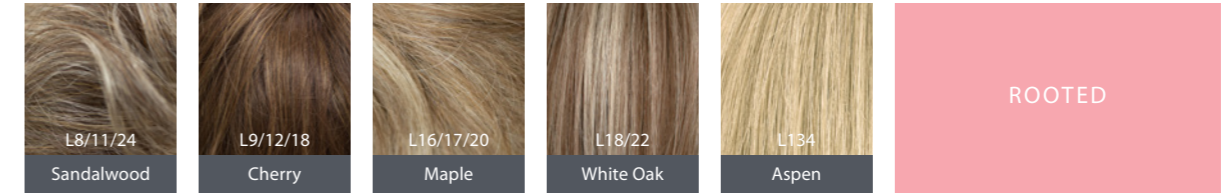
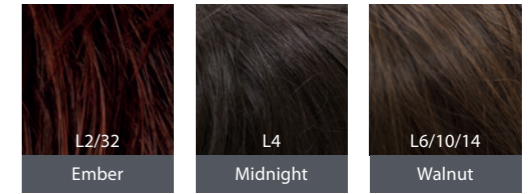


ESSENTIAL
BY SENTOO

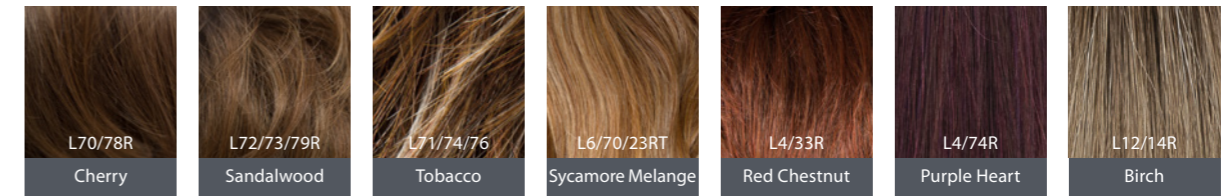


LOTUS
BY SENTOO

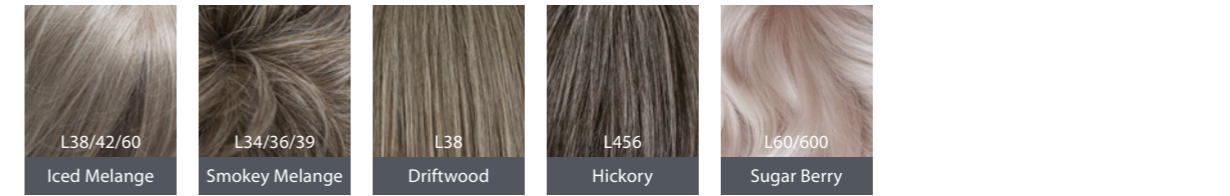
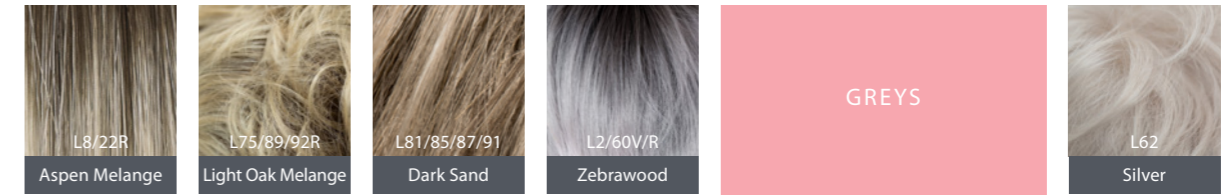
MELANGE



ROOTED



GREYS



HAIR COLOUR GUIDE

FOR A TRUE REPRESENTATION OF COLOUR, WE RECOMMEND USING A COLLECTION COLOUR RING.

FOR Å FÅ EN VIRKELIGHETSTRO FARGEJENGIVELSE/NUANCE ANBEFALER VI Å/AT BRUKE/BRUGE KOLLEKTIONERNE FÅRGRING/FARVERING.

CREATIVE
BY SENTOO

HAIR PIECES

BLONDES



BROWNS



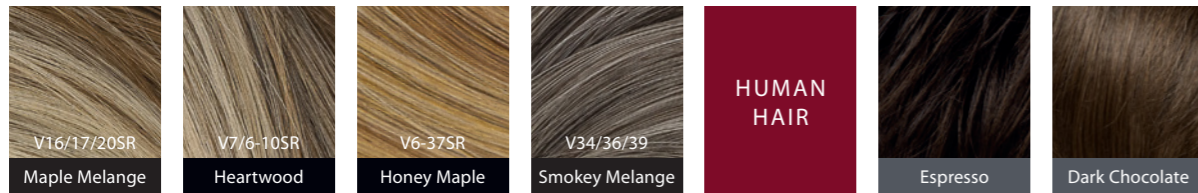
GREYS



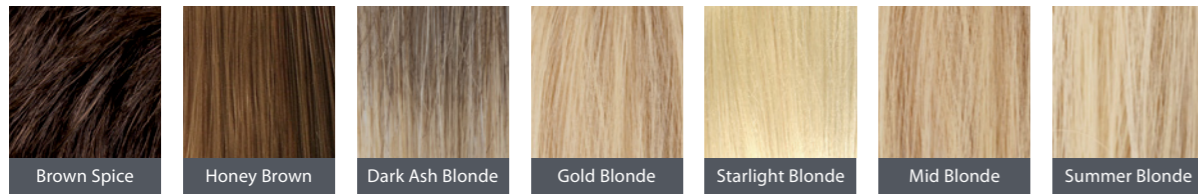
CREATIVE
BY SENTOO

WIGS

VHAIR
MIX



HUMAN
HAIR



SENTOO
COLLECTION

FOR A TRUE REPRESENTATION OF COLOUR, WE RECOMMEND USING A COLLECTION COLOUR RING.

| FÖR RÄTT FÄRGANGIVELSE OCH NYANS, ANVÄND KOLLEKTIONENS FÄRGRING.

| FOR Å FÅ EN VIRKELIGHETSTRO FARGEJENGIVELSE/NUANCE ANBEFALER VI Å/AT BRUKE/BRUGE KOLLEKTIONERNE FÄRGRING/FARVERING.

Aderans

SCANDINAVIA



ADERANS.SE

ADERANS | SWEDEN

TOUPÉMA BELGAL
020-36 87 00
toupemabelgal.se

ADERANS | DENMARK

CARL M LUNDH
78 77 05 46
carlmundh.dk

ADERANS | NORWAY

CARL M LUNDH
219 39 620
carlmundh.no